

## Anti-NDUFAF7 Mouse Monoclonal Antibody [Clone ID: OTI4A5]

Catalog Number: M12013-1

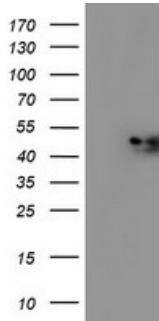
### Overview

Product Name	Anti-NDUFAF7 Mouse Monoclonal Antibody [Clone ID: OTI4A5]
Reactive Species	Human, Mouse
Description	Boster Bio C2orf56 (NDUFAF7) mouse monoclonal antibody, clone OTI4A5 (formerly 4A5). Catalog# M12013-1. Tested in IHC, WB. This antibody reacts with Human, Mouse.
Application	IHC, WB
Clonality	Monoclonal OTI4A5
Formulation	PBS (pH 7.3) containing 1% stabilizing protein, 50% glycerol and 0.02% sodium azide. This antibody is supplied in a stabilized formulation. Compatibility with conjugation reactions depends on the chemistry of the conjugation method used. For conjugation methods that are not compatible with the stabilizing components present in this formulation, a carrier-free antibody format is required.
Storage Instructions	Store at -20°C as received.
Host	Mouse
Uniprot ID	Q7L592

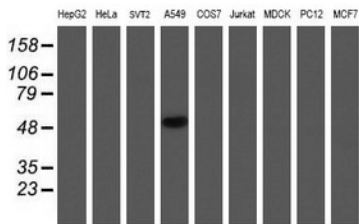
### Technical Details

Immunogen	Full length human recombinant protein of human C2orf56 (NP_653337) produced in HEK293T cell.
Isotype	IgG2b
Concentration	0.86 mg/ml
Purification	Purified from mouse ascites fluids or tissue culture supernatant by affinity chromatography (protein A/G)
Suggested Dilutions	WB 1:500~2000 IHC 1:150

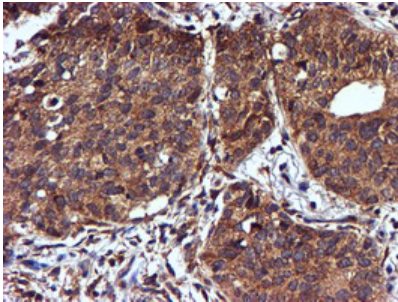
## Anti-NDUFAF7 Mouse Monoclonal Antibody [Clone ID: OTI4A5] (M12013-1) Images



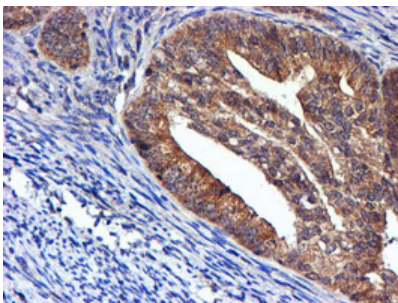
HEK293T cells were transfected with the pCMV6-ENTRY control (Left lane) or pCMV6-ENTRY C2orf56 (Right lane) cDNA for 48 hrs and lysed. Equivalent amounts of cell lysates (5 ug per lane) were separated by SDS-PAGE and immunoblotted with anti-C2orf56.



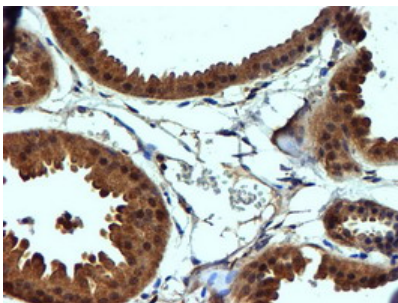
Western blot analysis of extracts (35ug) from 9 different cell lines by using anti-C2orf56 monoclonal antibody.



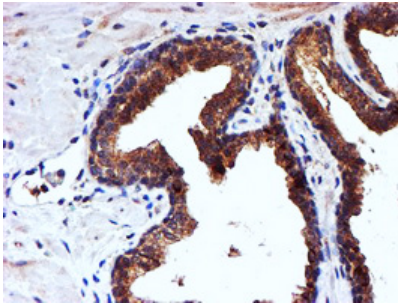
Immunohistochemical staining of paraffin-embedded Carcinoma of Human lung tissue using anti-C2orf56 mouse monoclonal antibody. (Heat-induced epitope retrieval by 10mM citric buffer)



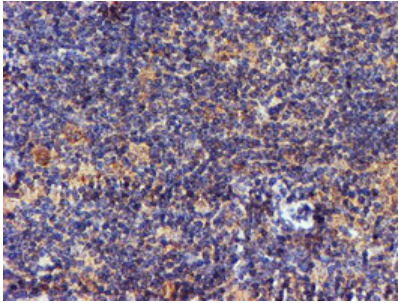
Immunohistochemical staining of paraffin-embedded Adenocarcinoma of Human endometrium tissue using anti-C2orf56 mouse monoclonal antibody. (Heat-induced epitope retrieval by 10mM citric buffer)



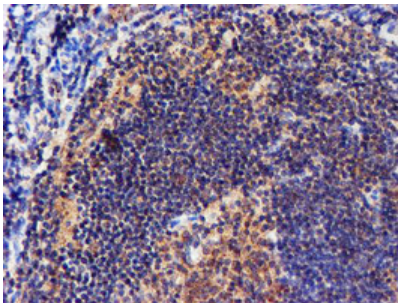
Immunohistochemical staining of paraffin-embedded Human breast tissue within the normal limits using anti-C2orf56 mouse monoclonal antibody. (Heat-induced epitope retrieval by 10mM citric buffer)



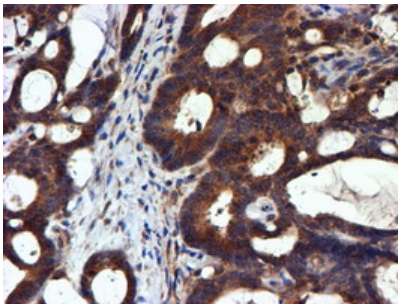
Immunohistochemical staining of paraffin-embedded Carcinoma of Human prostate tissue using anti-C2orf56 mouse monoclonal antibody. (Heat-induced epitope retrieval by 10mM citric buffer)



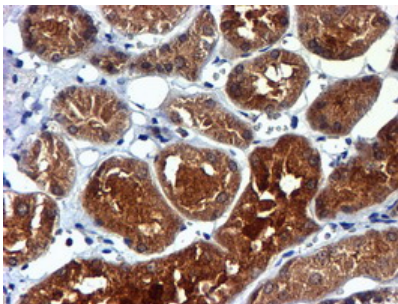
Immunohistochemical staining of paraffin-embedded Human lymphoma tissue using anti-C2orf56 mouse monoclonal antibody. (Heat-induced epitope retrieval by 10mM citric buffer)



Immunohistochemical staining of paraffin-embedded Human tonsil within the normal limits using anti-C2orf56 mouse monoclonal antibody. (Heat-induced epitope retrieval by 10mM citric buffer)

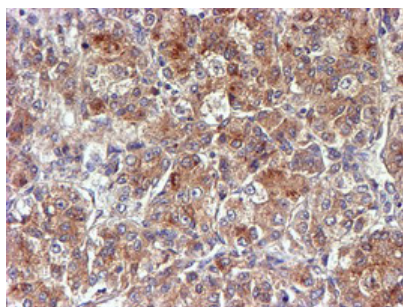


Immunohistochemical staining of paraffin-embedded Adenocarcinoma of Human colon tissue using anti-C2orf56 mouse monoclonal antibody. (Heat-induced epitope retrieval by 10mM citric buffer)



Immunohistochemical staining of paraffin-embedded Human Kidney tissue within the normal limits using anti-C2orf56 mouse monoclonal antibody. (Heat-induced epitope retrieval by 10mM citric buffer)

Immunohistochemical staining of paraffin-embedded Carcinoma of Human liver tissue using anti-C2orf56 mouse



monoclonal antibody. (Heat-induced epitope retrieval by 10mM citric buffer)

## Submit a product review to [Biocompare.com](https://www.biocompare.com)

Submit a review of this product to [Biocompare.com](https://www.biocompare.com) to receive a \$20 Amazon.com giftcard! Your reviews help your fellow scientists make the right decisions. Thank you for your contribution.



Anti-NDUFAF7 Mouse Monoclonal Antibody [Clone ID: OTI4A5]

For Research Use Only. Not for use in diagnostic procedures.