

Anti-DDX50 Mouse Monoclonal Antibody [Clone ID: OTI4F7]

Catalog Number: M12041

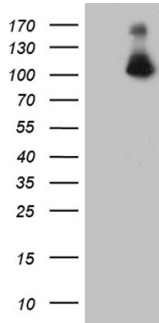
Overview

Product Name	Anti-DDX50 Mouse Monoclonal Antibody [Clone ID: OTI4F7]
Reactive Species	Human, Mouse, Rat
Description	Boster Bio DDX50 mouse monoclonal antibody, clone OTI4F7. Catalog# M12041. Tested in IHC, WB. This antibody reacts with Human, Mouse, Rat.
Application	IHC, WB
Clonality	Monoclonal OTI4F7
Formulation	PBS (pH 7.3) containing 1% stabilizing protein, 50% glycerol and 0.02% sodium azide. This antibody is supplied in a stabilized formulation. Compatibility with conjugation reactions depends on the chemistry of the conjugation method used. For conjugation methods that are not compatible with the stabilizing components present in this formulation, a carrier-free antibody format is required.
Storage Instructions	Store at -20°C as received.
Host	Mouse
Uniprot ID	Q9BQ39

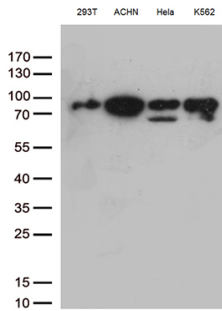
Technical Details

Immunogen	Human recombinant protein fragment corresponding to amino acids 1-287 of human DDX50 (NP_076950) produced in E.coli.
Isotype	IgG2b
Concentration	1 mg/ml
Purification	Purified from mouse ascites fluids or tissue culture supernatant by affinity chromatography (protein A/G)
Suggested Dilutions	WB 1:500~2000 IHC 1:1000

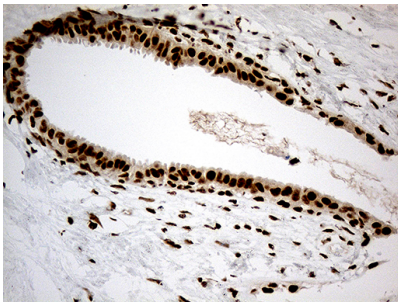
Anti-DDX50 Mouse Monoclonal Antibody [Clone ID: OTI4F7] (M12041) Images



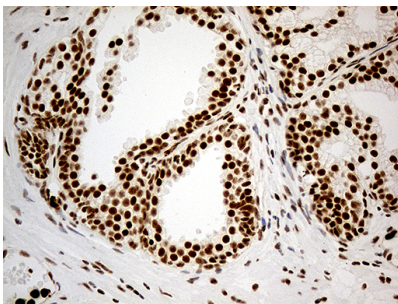
HEK293T cells were transfected with the pCMV6-ENTRY control (Left lane) or pCMV6-ENTRY DDX50 (Right lane) cDNA for 48 hrs and lysed. Equivalent amounts of cell lysates (5 ug per lane) were separated by SDS-PAGE and immunoblotted with anti-DDX50.



Western blot analysis of extracts (35ug) from 4 different cell lines by using anti-DDX50 monoclonal antibody (1:500).

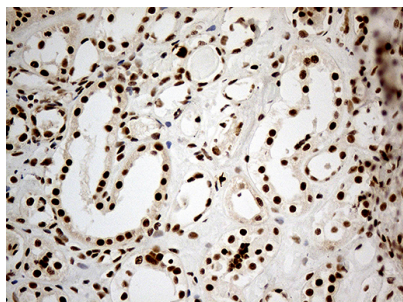
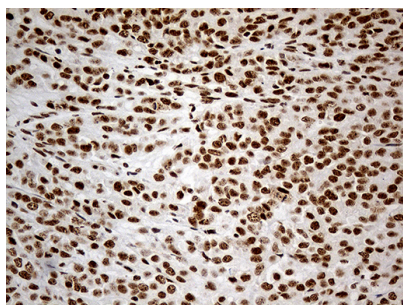


Immunohistochemical staining of paraffin-embedded Human breast tissue within the normal limits using anti-DDX50 mouse monoclonal antibody. (Heat-induced epitope retrieval by 1mM EDTA in 10mM Tris buffer (pH8.5) at 120Å°C for 3min)



Immunohistochemical staining of paraffin-embedded Carcinoma of Human prostate tissue using anti-DDX50 mouse monoclonal antibody. (Heat-induced epitope retrieval by 1mM EDTA in 10mM Tris buffer (pH8.5) at 120Å°C for 3min)

Immunohistochemical staining of paraffin-embedded Adenocarcinoma of Human breast tissue using anti-DDX50 mouse monoclonal antibody. (Heat-induced epitope retrieval by 1mM EDTA in 10mM Tris buffer (pH8.5) at 120Å°C for 3min)



Immunohistochemical staining of paraffin-embedded Human Kidney tissue within the normal limits using anti-DDX50 mouse monoclonal antibody. (Heat-induced epitope retrieval by 1mM EDTA in 10mM Tris buffer (pH8.5) at 120Å°C for 3min)

Submit a product review to [Biocompare.com](https://www.biocompare.com)

Submit a review of this product to [Biocompare.com](https://www.biocompare.com) to receive a \$20 Amazon.com giftcard! Your reviews help your fellow scientists make the right decisions. Thank you for your contribution.



Anti-DDX50 Mouse Monoclonal Antibody [Clone ID: OTI4F7]

For Research Use Only. Not for use in diagnostic procedures.