

## Anti-TMED1 Mouse Monoclonal Antibody [Clone ID: OTI7D2]

Catalog Number: M12148

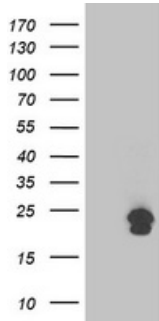
### Overview

Product Name	Anti-TMED1 Mouse Monoclonal Antibody [Clone ID: OTI7D2]
Reactive Species	Human, Mouse, Rat
Description	Boster Bio TMED1 mouse monoclonal antibody, clone OTI7D2 (formerly 7D2). Catalog# M12148. Tested in IF, WB. This antibody reacts with Human, Mouse, Rat.
Application	IF, WB
Clonality	Monoclonal OTI7D2
Formulation	PBS (pH 7.3) containing 1% stabilizing protein, 50% glycerol and 0.02% sodium azide. This antibody is supplied in a stabilized formulation. Compatibility with conjugation reactions depends on the chemistry of the conjugation method used. For conjugation methods that are not compatible with the stabilizing components present in this formulation, a carrier-free antibody format is required.
Storage Instructions	Store at -20°C as received.
Host	Mouse
Uniprot ID	Q13445

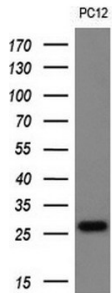
### Technical Details

Immunogen	Full length human recombinant protein of human TMED1 (NP_006849) produced in HEK293T cell.
Isotype	IgG1
Concentration	0.25 mg/ml
Purification	Purified from mouse ascites fluids or tissue culture supernatant by affinity chromatography (protein A/G)
Suggested Dilutions	WB 1:500 IF 1:100

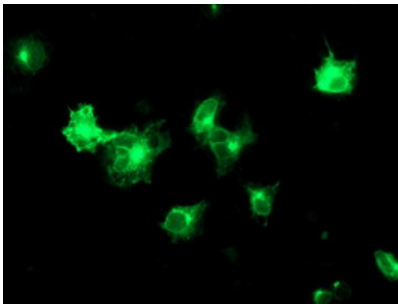
## Anti-TMED1 Mouse Monoclonal Antibody [Clone ID: OTI7D2] (M12148) Images



HEK293T cells were transfected with the pCMV6-ENTRY control (Left lane) or pCMV6-ENTRY TMED1 (Right lane) cDNA for 48 hrs and lysed. Equivalent amounts of cell lysates (5 ug per lane) were separated by SDS-PAGE and immunoblotted with anti-TMED1.



Western blot analysis of extracts (10ug) from 1 cell line by using anti-TMED1 monoclonal antibody (1:200).



Western blot analysis of extracts (10ug) from PC12 cell line by using anti-TMED1 monoclonal antibody (1:200).

### Submit a product review to [Biocompare.com](https://www.biocompare.com)

Submit a review of this product to [Biocompare.com](https://www.biocompare.com) to receive a \$20 Amazon.com giftcard! Your reviews help your fellow scientists make the right decisions. Thank you for your contribution.



Anti-TMED1 Mouse Monoclonal Antibody [Clone ID: OTI7D2]

For Research Use Only. Not for use in diagnostic procedures.