

## Anti-CCDC93 Mouse Monoclonal Antibody [Clone ID: OTI6E11]

Catalog Number: M12181

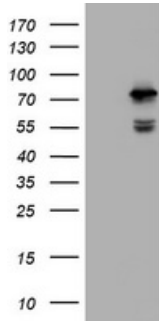
### Overview

Product Name	Anti-CCDC93 Mouse Monoclonal Antibody [Clone ID: OTI6E11]
Reactive Species	Dog, Human, Monkey, Mouse, Rat
Description	Boster Bio CCDC93 mouse monoclonal antibody, clone OTI6E11 (formerly 6E11). Catalog# M12181. Tested in IHC, WB. This antibody reacts with Human, Monkey, Mouse, Rat, Dog.
Application	IHC, WB
Clonality	Monoclonal OTI6E11
Formulation	PBS (pH 7.3) containing 1% stabilizing protein, 50% glycerol and 0.02% sodium azide. This antibody is supplied in a stabilized formulation. Compatibility with conjugation reactions depends on the chemistry of the conjugation method used. For conjugation methods that are not compatible with the stabilizing components present in this formulation, a carrier-free antibody format is required.
Storage Instructions	Store at -20°C as received.
Host	Mouse
Uniprot ID	Q567U6

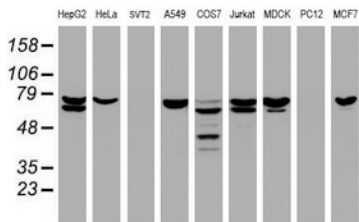
### Technical Details

Immunogen	Human recombinant protein fragment corresponding to amino acids 293-631 of human CCDC93 (NP_061917) produced in E.coli.
Isotype	IgG1
Concentration	1 mg/ml
Purification	Purified from mouse ascites fluids or tissue culture supernatant by affinity chromatography (protein A/G)
Suggested Dilutions	WB 1:2000 IHC 1:150

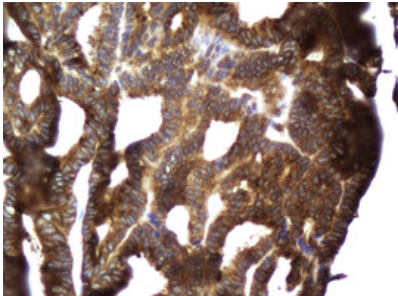
## Anti-CCDC93 Mouse Monoclonal Antibody [Clone ID: OTI6E11] (M12181) Images



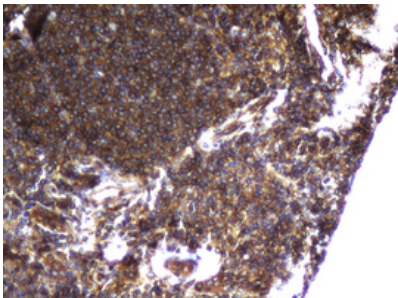
HEK293T cells were transfected with the pCMV6-ENTRY control (Left lane) or pCMV6-ENTRY CCDC93 (Right lane) cDNA for 48 hrs and lysed. Equivalent amounts of cell lysates (5 ug per lane) were separated by SDS-PAGE and immunoblotted with anti-CCDC93.



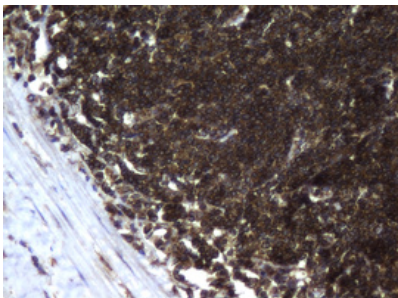
Western blot analysis of extracts (35ug) from 9 different cell lines by using anti-CCDC93 monoclonal antibody (HepG2: human; HeLa: human; SVT2: mouse; A549: human; COS7: monkey; Jurkat: human; MDCK: canine; PC12: rat; MCF7: human).



Immunohistochemical staining of paraffin-embedded Adenocarcinoma of Human endometrium tissue using anti-CCDC93 mouse monoclonal antibody. (Heat-induced epitope retrieval by 10mM citric buffer)



Immunohistochemical staining of paraffin-embedded Human lymph node tissue within the normal limits using anti-CCDC93 mouse monoclonal antibody. (Heat-induced epitope retrieval by 10mM citric buffer)



Immunohistochemical staining of paraffin-embedded Human lymphoma tissue using anti-CCDC93 mouse monoclonal antibody. (Heat-induced epitope retrieval by 10mM citric buffer)

## Submit a product review to Biocompare.com

Submit a review of this product to Biocompare.com to receive a \$20 Amazon.com giftcard! Your reviews help your fellow scientists make the right decisions. Thank you for your contribution.



Anti-CCDC93 Mouse Monoclonal Antibody [Clone ID: OTI6E11]

For Research Use Only. Not for use in diagnostic procedures.