

Anti-SSX2 Mouse Monoclonal Antibody [Clone ID: OTI4D10]

Catalog Number: M12258

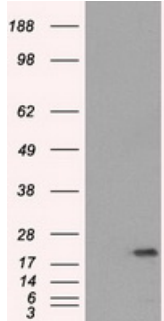
Overview

Product Name	Anti-SSX2 Mouse Monoclonal Antibody [Clone ID: OTI4D10]
Reactive Species	Human
Description	Boster Bio Anti-SSX2 mouse monoclonal antibody, clone OTI4D10 (formerly 4D10). Catalog# M12258. Tested in IF, IHC, WB. This antibody reacts with Human.
Application	IF, IHC, WB
Clonality	Monoclonal OTI4D10
Formulation	PBS (pH 7.3) containing 1% stabilizing protein, 50% glycerol and 0.02% sodium azide. This antibody is supplied in a stabilized formulation. Compatibility with conjugation reactions depends on the chemistry of the conjugation method used. For conjugation methods that are not compatible with the stabilizing components present in this formulation, a carrier-free antibody format is required.
Storage Instructions	Store at -20°C as received.
Host	Mouse
Uniprot ID	Q16385

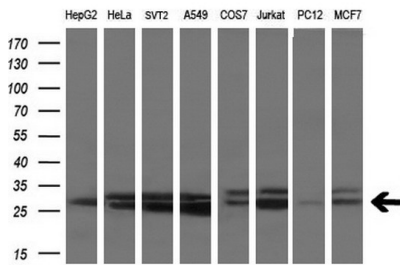
Technical Details

Immunogen	Full-length protein expressed in 293T cell transfected with human SSX2 expression vector
Isotype	IgG1
Concentration	0.67 mg/ml
Purification	Purified from mouse ascites fluids or tissue culture supernatant by affinity chromatography (protein A/G)
Suggested Dilutions	WB 1:2000 IHC 1:50 IF 1:100

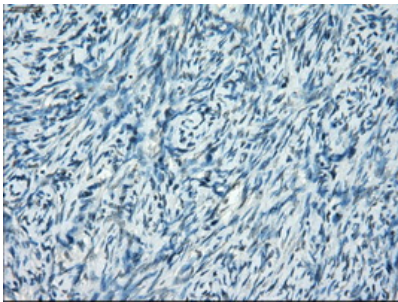
Anti-SSX2 Mouse Monoclonal Antibody [Clone ID: OTI4D10] (M12258) Images



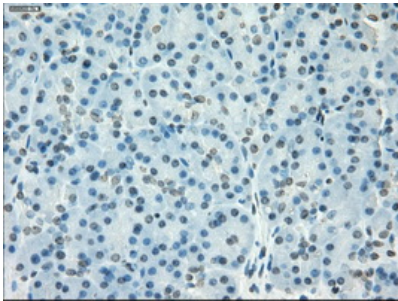
HEK293T cells were transfected with the pCMV6-ENTRY control (Left lane) or pCMV6-ENTRY SSX2 (Right lane) cDNA for 48 hrs and lysed. Equivalent amounts of cell lysates (5 ug per lane) were separated by SDS-PAGE and immunoblotted with anti-SSX2.



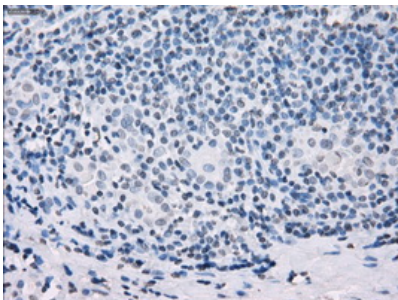
Western blot analysis of extracts (10ug) from 8 different cell lines by using anti-SSX2 monoclonal antibody at 1:200 dilution.



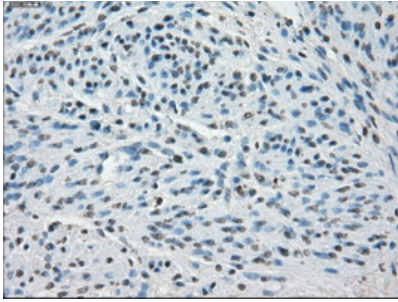
Immunohistochemical staining of paraffin-embedded Ovary tissue within the normal limits using anti-SSX2 mouse monoclonal antibody. (Heat-induced epitope retrieval by 10mM citric buffer)



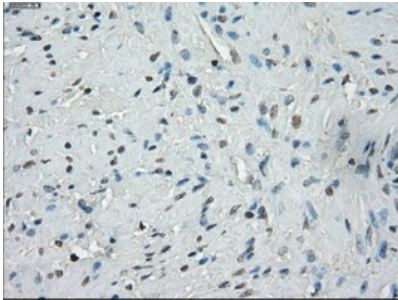
Immunohistochemical staining of paraffin-embedded pancreas tissue within the normal limits using anti-SSX2 mouse monoclonal antibody. (Heat-induced epitope retrieval by 10mM citric buffer)



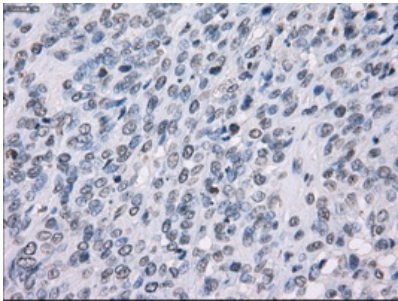
Immunohistochemical staining of paraffin-embedded Carcinoma of thyroid tissue using anti-SSX2 mouse monoclonal antibody. (Heat-induced epitope retrieval by 10mM citric buffer)



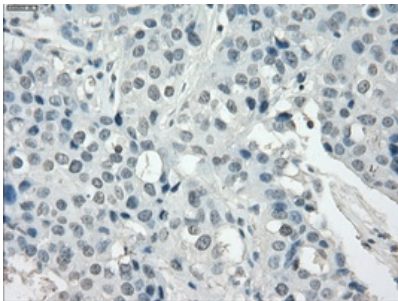
Immunohistochemical staining of paraffin-embedded endometrium tissue within the normal limits using anti-SSX2 mouse monoclonal antibody. (Heat-induced epitope retrieval by 10mM citric buffer)



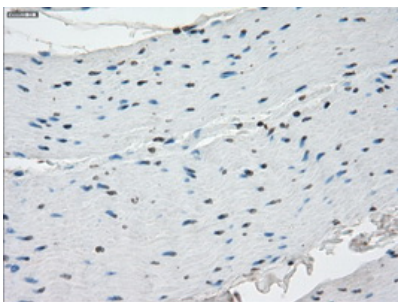
Immunohistochemical staining of paraffin-embedded prostate tissue within the normal limits using anti-SSX2 mouse monoclonal antibody. (Heat-induced epitope retrieval by 10mM citric buffer)



Immunohistochemical staining of paraffin-embedded Carcinoma of bladder tissue using anti-SSX2 mouse monoclonal antibody. (Heat-induced epitope retrieval by 10mM citric buffer)

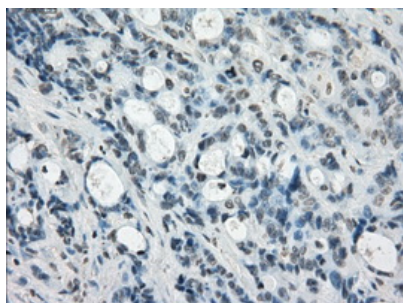


Immunohistochemical staining of paraffin-embedded Adenocarcinoma of breast tissue using anti-SSX2 mouse monoclonal antibody. (Heat-induced epitope retrieval by 10mM citric buffer)

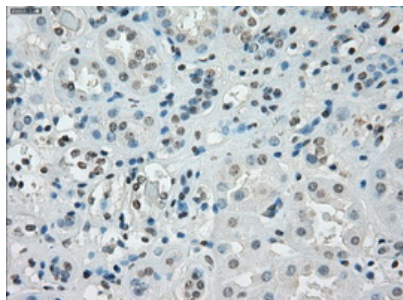


Immunohistochemical staining of paraffin-embedded colon tissue within the normal limits using anti-SSX2 mouse monoclonal antibody. (Heat-induced epitope retrieval by 10mM citric buffer)

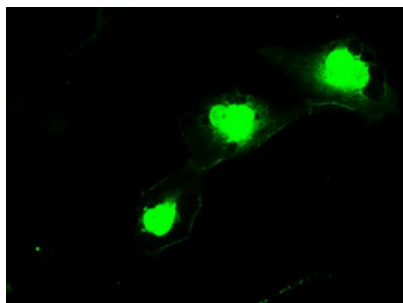
Immunohistochemical staining of paraffin-embedded Adenocarcinoma of colon tissue using anti-SSX2 mouse



monoclonal antibody. (Heat-induced epitope retrieval by 10mM citric buffer)



Immunohistochemical staining of paraffin-embedded Kidney tissue within the normal limits using anti-SSX2 mouse monoclonal antibody. (Heat-induced epitope retrieval by 10mM citric buffer)



Anti-SSX2 mouse monoclonal antibody (M12258) immunofluorescent staining of COS7 cells transiently transfected by pCMV6-ENTRY SSX2.

Submit a product review to Biocompare.com

Submit a review of this product to Biocompare.com to receive a \$20 Amazon.com giftcard! Your reviews help your fellow scientists make the right decisions. Thank you for your contribution.



Anti-SSX2 Mouse Monoclonal Antibody [Clone ID: OTI4D10]

For Research Use Only. Not for use in diagnostic procedures.