

Anti-MRPS11 Mouse Monoclonal Antibody [Clone ID: OTI2E9]

Catalog Number: M12333

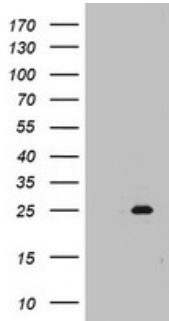
Overview

Product Name	Anti-MRPS11 Mouse Monoclonal Antibody [Clone ID: OTI2E9]
Reactive Species	Human
Description	Boster Bio MRPS11 mouse monoclonal antibody, clone OTI2E9 (formerly 2E9). Catalog# M12333. Tested in IHC, WB. This antibody reacts with Human.
Application	IHC, WB
Clonality	Monoclonal OTI2E9
Formulation	PBS (pH 7.3) containing 1% stabilizing protein, 50% glycerol and 0.02% sodium azide. This antibody is supplied in a stabilized formulation. Compatibility with conjugation reactions depends on the chemistry of the conjugation method used. For conjugation methods that are not compatible with the stabilizing components present in this formulation, a carrier-free antibody format is required.
Storage Instructions	Store at -20°C as received.
Host	Mouse
Uniprot ID	P82912

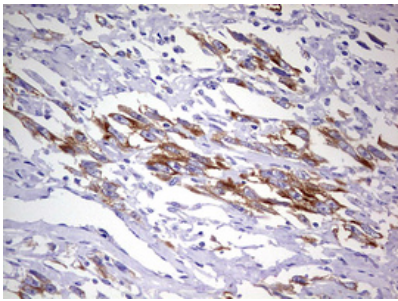
Technical Details

Immunogen	Full length human recombinant protein of human MRPS11 (NP_073750) produced in E.coli.
Isotype	IgG1
Concentration	1 mg/ml
Purification	Purified from mouse ascites fluids or tissue culture supernatant by affinity chromatography (protein A/G)
Suggested Dilutions	WB 1:2000

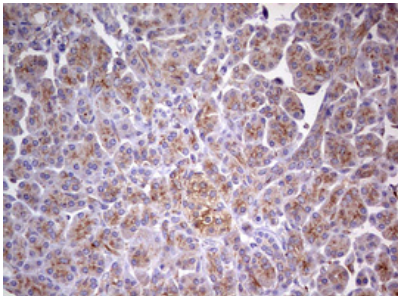
Anti-MRPS11 Mouse Monoclonal Antibody [Clone ID: OTI2E9] (M12333) Images



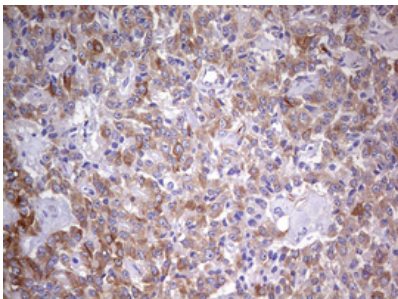
HEK293T cells were transfected with the pCMV6-ENTRY control (Left lane) or pCMV6-ENTRY MRPS11 (Right lane) cDNA for 48 hrs and lysed. Equivalent amounts of cell lysates (5 ug per lane) were separated by SDS-PAGE and immunoblotted with anti-MRPS11.



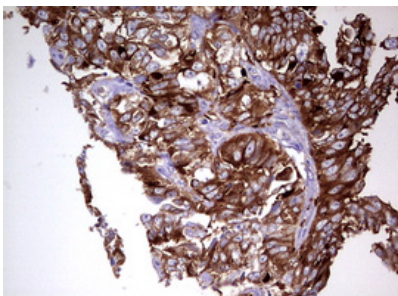
Immunohistochemical staining of paraffin-embedded Adenocarcinoma of Human ovary tissue using anti-MRPS11 mouse monoclonal antibody. (M12333) Dilution: 1:150



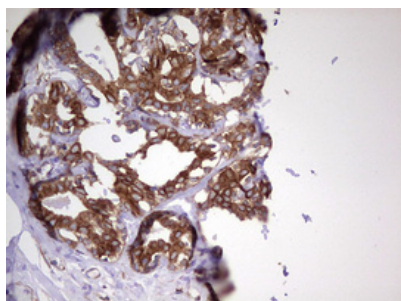
Immunohistochemical staining of paraffin-embedded Human pancreas tissue within the normal limits using anti-MRPS11 mouse monoclonal antibody. (M12333) Dilution: 1:150



Immunohistochemical staining of paraffin-embedded Carcinoma of Human pancreas tissue using anti-MRPS11 mouse monoclonal antibody. (M12333) Dilution: 1:150



Immunohistochemical staining of paraffin-embedded Adenocarcinoma of Human endometrium tissue using anti-MRPS11 mouse monoclonal antibody. (M12333) Dilution: 1:150



Immunohistochemical staining of paraffin-embedded Human breast tissue within the normal limits using anti-MRPS11 mouse monoclonal antibody. (M12333) Dilution: 1:150

Submit a product review to Biocompare.com

Submit a review of this product to Biocompare.com to receive a \$20 Amazon.com giftcard! Your reviews help your fellow scientists make the right decisions. Thank you for your contribution.



Anti-MRPS11 Mouse Monoclonal Antibody [Clone ID: OT12E9]

For Research Use Only. Not for use in diagnostic procedures.