

Anti-Human Lambda Light Chain Rabbit Monoclonal Antibody, Clone#RM127

Catalog Number: M12334

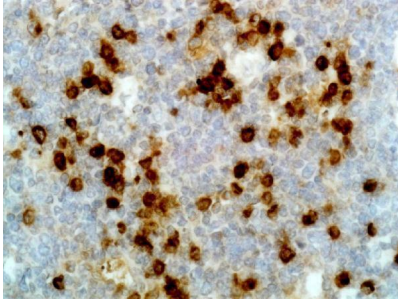
Overview

Product Name	Anti-Human Lambda Light Chain Rabbit Monoclonal Antibody, Clone#RM127
Reactive Species	Human
Description	Boster Bio Anti-Human Lambda Light Chain Rabbit Monoclonal Antibody, Clone#RM127 (Catalog # M12334). Tested in ELISA, ICC, IHC, Flow Cytometry applications. This antibody reacts with Human.
Application	ELISA, Flow Cytometry, IHC, ICC
Clonality	Monoclonal RM127
Formulation	50% Glycerol/PBS with 1% stabilizing protein and 0.09% sodium azide This antibody is supplied in a stabilized formulation. Compatibility with conjugation reactions depends on the chemistry of the conjugation method used. For conjugation methods that are not compatible with the stabilizing components present in this formulation, a carrier-free antibody format is required.
Storage Instructions	Store at -20°C for one year. Avoid repeated freeze-thaw cycles.
Host	Rabbit
Uniprot ID	P0CG04

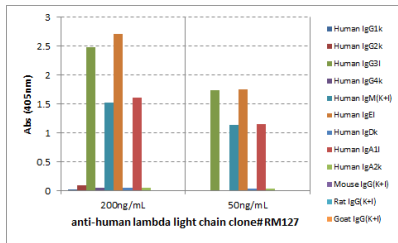
Technical Details

Immunogen	Human IgG
Cross Reactivity	This antibody reacts to the lambda light chain of human immunoglobulins, and does not react to the kappa light chain. RM127 does not react to monkey (Cyno or Rhesus) IgG, mouse IgG, rat IgG, or goat IgG.
Isotype	Rabbit IgG
Form	Liquid
Concentration	1 mg/mL
Purification	Protein A affinity purified from an animal origin-free culture supernatant
Suggested Dilutions	ELISA: 0.05ug/mL – 0.2ug/mL Immunocytochemistry (ICC): 0.5ug/mL-2ug/mL Immunohistochemistry (IHC): 0.5ug/mL-2ug/mL Flow Cytometry (FC): 0.2ug/mL-2ug/mL.

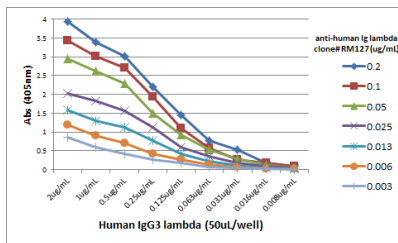
Anti-Human Lambda Light Chain Rabbit Monoclonal Antibody, Clone#RM127 (M12334) Images



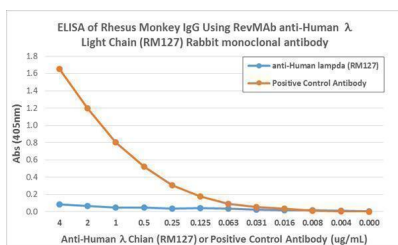
IHC result showing immunohistochemical staining of formalin fixed and paraffin embedded human tonsil tissue section using anti-human Ig lambda light chain rabbit monoclonal antibody (Clone RM127).



ELISA result showing specificity of human immunoglobulins shows RM127 reacted to the lambda light chain of human immunoglobulins. No cross reactivity with the kappa light chain, mouse IgG, rat IgG, or goat IgG. The plate was coated with 50 ng/well of different immunoglobulins. 200 ng/mL or 50 ng/mL of RM127 was used as the primary antibody. An alkaline phosphatase conjugated anti-rabbit IgG as the secondary antibody.



ELISA result showing specificity titer using RM127. The plate was coated with different amounts of human IgG3. A serial dilution of RM127 was used as the primary antibody. An alkaline phosphatase conjugated anti-rabbit IgG as the secondary antibody.



ELISA result showing specificity showing RM127 does not react to monkey IgG. The plate was coated with Rhesus monkey IgG. A serial dilution of RM127 and a monkey IgG binding antibody (positive control) was used as the detection antibody.

Submit a product review to [Biocompare.com](https://www.biocompare.com)

Submit a review of this product to [Biocompare.com](https://www.biocompare.com) to receive a \$20 Amazon.com giftcard! Your reviews help your fellow scientists make the right decisions. Thank you for your contribution.



Anti-Human Lambda Light Chain Rabbit Monoclonal Antibody, Clone#RM127

For Research Use Only. Not for use in diagnostic procedures.