

Anti-UCHL5IP (HAUS7) Mouse Monoclonal Antibody [Clone ID: OTI1E8]

Catalog Number: M12338

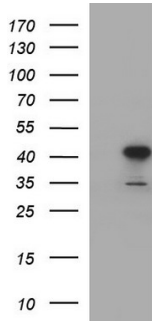
Overview

Product Name	Anti-UCHL5IP (HAUS7) Mouse Monoclonal Antibody [Clone ID: OTI1E8]
Reactive Species	Human
Description	Boster Bio HAUS7 mouse monoclonal antibody, clone OTI1E8 (formerly 1E8). Catalog# M12338. Tested in IF, IHC, WB. This antibody reacts with Human.
Application	IF, IHC, WB
Clonality	Monoclonal OTI1E8
Formulation	PBS (pH 7.3) containing 1% stabilizing protein, 50% glycerol and 0.02% sodium azide. This antibody is supplied in a stabilized formulation. Compatibility with conjugation reactions depends on the chemistry of the conjugation method used. For conjugation methods that are not compatible with the stabilizing components present in this formulation, a carrier-free antibody format is required.
Storage Instructions	Store at -20°C as received.
Host	Mouse
Uniprot ID	Q99871

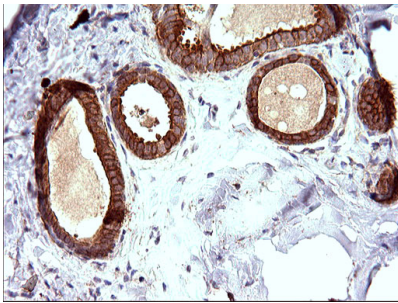
Technical Details

Immunogen	Full length human recombinant protein of human HAUS7 (NP_059988) produced in HEK293T cell.
Isotype	IgG1
Concentration	1 mg/ml
Purification	Purified from mouse ascites fluids or tissue culture supernatant by affinity chromatography (protein A/G)
Suggested Dilutions	WB 1:4000 IHC 1:150 IF: 1:50-1:100

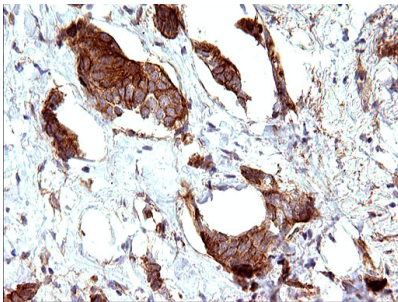
Anti-UCHL5IP (HAUS7) Mouse Monoclonal Antibody [Clone ID: OTI1E8] (M12338) Images



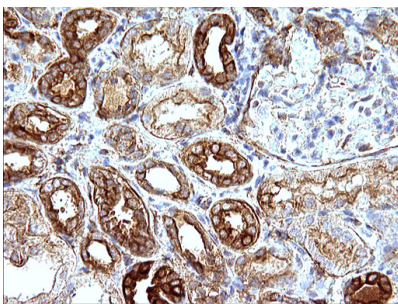
HEK293T cells were transfected with the pCMV6-ENTRY control (Left lane) or pCMV6-ENTRY HAUS7 (Right lane) cDNA for 48 hrs and lysed. Equivalent amounts of cell lysates (5 ug per lane) were separated by SDS-PAGE and immunoblotted with anti-HAUS7.



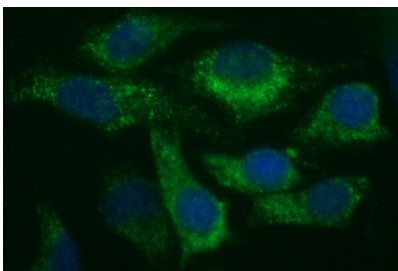
Immunohistochemical staining of paraffin-embedded Human breast tissue within the normal limits using anti-HAUS7 mouse monoclonal antibody. (Heat-induced epitope retrieval by 10mM citric buffer)



Immunohistochemical staining of paraffin-embedded Adenocarcinoma of Human breast tissue using anti-HAUS7 mouse monoclonal antibody. (Heat-induced epitope retrieval by 10mM citric buffer)



Immunohistochemical staining of paraffin-embedded Human Kidney tissue within the normal limits using anti-HAUS7 mouse monoclonal antibody. (Heat-induced epitope retrieval by 10mM citric buffer)



Immunofluorescent staining of HeLa cells using anti-HAUS7 mouse monoclonal antibody (M12338) at 1:100

Submit a product review to Biocompare.com

Submit a review of this product to Biocompare.com to receive a \$20 Amazon.com giftcard! Your reviews help your fellow scientists make the right decisions. Thank you for your contribution.



Anti-UCHL5IP (HAUS7) Mouse Monoclonal Antibody [Clone ID: OT11E8]

For Research Use Only. Not for use in diagnostic procedures.