

Anti-GDAP1L1 Mouse Monoclonal Antibody [Clone ID: OT11G5]

Catalog Number: M12357

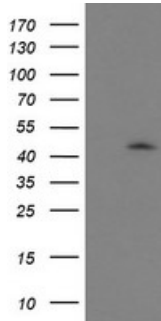
Overview

| | |
|----------------------|--|
| Product Name | Anti-GDAP1L1 Mouse Monoclonal Antibody [Clone ID: OT11G5] |
| Reactive Species | Human, Mouse, Rat |
| Description | Boster Bio GDAP1L1 mouse monoclonal antibody, clone OT11G5 (formerly 1G5). Catalog# M12357. Tested in FC, IF, WB. This antibody reacts with Human, Mouse, Rat. |
| Application | Flow Cytometry, IF, WB |
| Clonality | Monoclonal OT11G5 |
| Formulation | PBS (pH 7.3) containing 1% stabilizing protein, 50% glycerol and 0.02% sodium azide. This antibody is supplied in a stabilized formulation. Compatibility with conjugation reactions depends on the chemistry of the conjugation method used. For conjugation methods that are not compatible with the stabilizing components present in this formulation, a carrier-free antibody format is required. |
| Storage Instructions | Store at -20°C as received. |
| Host | Mouse |
| Uniprot ID | Q96MZ0 |

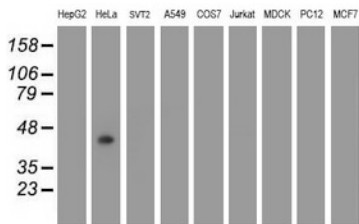
Technical Details

| | |
|---------------------|---|
| Immunogen | Full length human recombinant protein of human GDAP1L1 (NP_076939) produced in HEK293T cell. |
| Isotype | IgG1 |
| Concentration | 0.64 mg/ml |
| Purification | Purified from mouse ascites fluids or tissue culture supernatant by affinity chromatography (protein A/G) |
| Suggested Dilutions | WB 1:1000~2000 IF 1:100 Flow Cytometry 1:100 |

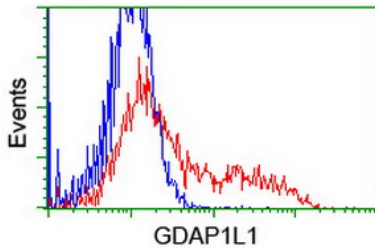
Anti-GDAP1L1 Mouse Monoclonal Antibody [Clone ID: OTI1G5] (M12357) Images



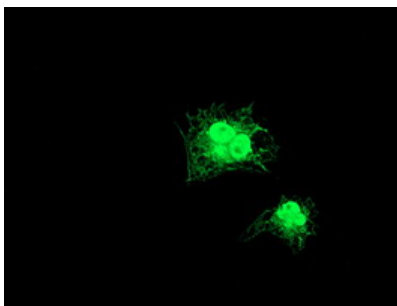
HEK293T cells were transfected with the pCMV6-ENTRY control (Left lane) or pCMV6-ENTRY GDAP1L1 (Right lane) cDNA for 48 hrs and lysed. Equivalent amounts of cell lysates (5 ug per lane) were separated by SDS-PAGE and immunoblotted with anti-GDAP1L1.



Western blot analysis of extracts (35ug) from 9 different cell lines by using anti-GDAP1L1 monoclonal antibody.



HEK293T cells transfected with either GDAP1L1 (Myc-DDK-tagged) overexpress plasmid (Red) or empty vector control plasmid (Blue) were immunostained by anti-GDAP1L1 antibody (M12357)



Anti-GDAP1L1 mouse monoclonal antibody (M12357) immunofluorescent staining of COS7 cells transiently transfected by pCMV6-ENTRY GDAP1L1.

Submit a product review to [Biocompare.com](https://www.biocompare.com)

Submit a review of this product to [Biocompare.com](https://www.biocompare.com) to receive a \$20 Amazon.com giftcard! Your reviews help your fellow scientists make the right decisions. Thank you for your contribution.



Anti-GDAP1L1 Mouse Monoclonal Antibody [Clone ID: OTI1G5]

For Research Use Only. Not for use in diagnostic procedures.