

## Anti-EPM2AIP1 Mouse Monoclonal Antibody [Clone ID: OTI1F11]

Catalog Number: M12427-2

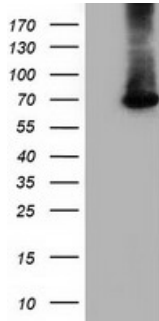
### Overview

|                      |  |
|----------------------|--|
| Product Name         | Anti-EPM2AIP1 Mouse Monoclonal Antibody [Clone ID: OTI1F11]  |
| Reactive Species     | Human, Mouse, Rat  |
| Description          | Boster Bio EPM2AIP1 mouse monoclonal antibody, clone OTI1F11 (formerly 1F11). Catalog# M12427-2. Tested in FC, IF, IHC, WB. This antibody reacts with Human, Mouse, Rat.   |
| Application          | Flow Cytometry, IF, IHC, WB  |
| Clonality            | Monoclonal OTI1F11   |
| Formulation          | PBS (pH 7.3) containing 1% stabilizing protein, 50% glycerol and 0.02% sodium azide. This antibody is supplied in a stabilized formulation. Compatibility with conjugation reactions depends on the chemistry of the conjugation method used. For conjugation methods that are not compatible with the stabilizing components present in this formulation, a carrier-free antibody format is required. |
| Storage Instructions | Store at -20°C as received.  |
| Host                 | Mouse  |
| Uniprot ID           | Q7L775   |

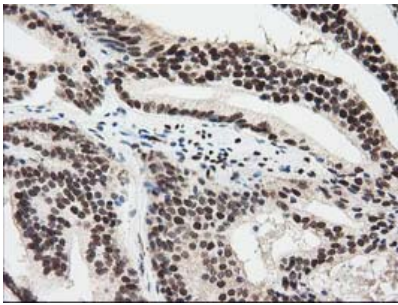
### Technical Details

|                     |   |
|---------------------|---|
| Immunogen           | Full length human recombinant protein of human EPM2AIP1 (NP_055620) produced in HEK293T cell.             |
| Isotype             | IgG2a   |
| Concentration       | 0.61 mg/ml  |
| Purification        | Purified from mouse ascites fluids or tissue culture supernatant by affinity chromatography (protein A/G) |
| Suggested Dilutions | WB: 1:500-1:2000<br>IF: 1:100<br>Flow Cytometry: 1:100<br>IHC: 1:50-1:150                                 |

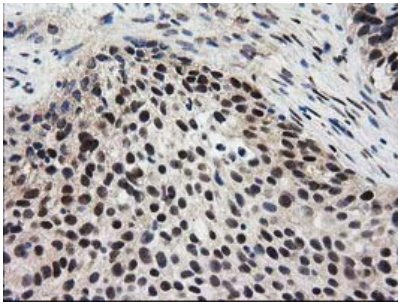
## Anti-EPM2AIP1 Mouse Monoclonal Antibody [Clone ID: OTI1F11] (M12427-2) Images



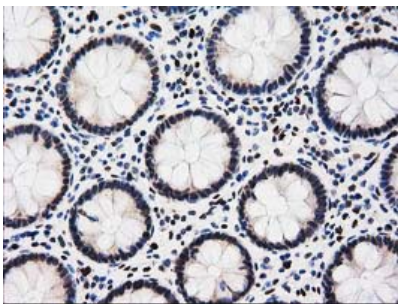
HEK293T cells were transfected with the pCMV6-ENTRY control (Left lane) or pCMV6-ENTRY EPM2AIP1 (Right lane) cDNA for 48 hrs and lysed. Equivalent amounts of cell lysates (5 ug per lane) were separated by SDS-PAGE and immunoblotted with anti-EPM2AIP1.



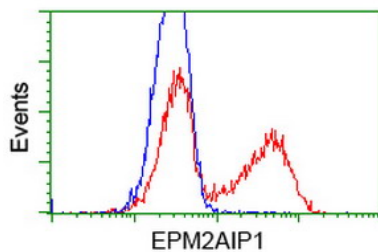
Immunohistochemical staining of paraffin-embedded Carcinoma of Human prostate tissue using anti-EPM2AIP1 mouse monoclonal antibody at 1:150 (M12427-2)



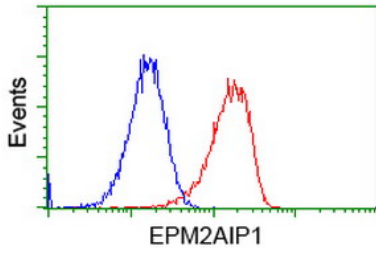
Immunohistochemical staining of paraffin-embedded Carcinoma of Human bladder tissue using anti-EPM2AIP1 mouse monoclonal antibody at 1:150 (M12427-2)



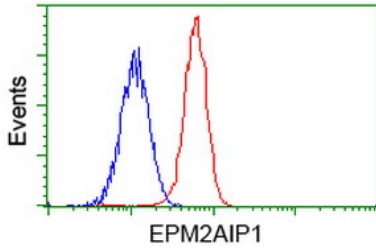
Immunohistochemical staining of paraffin-embedded Human colon tissue within the normal limits using anti-EPM2AIP1 mouse monoclonal antibody at 1:150 (M12427-2)



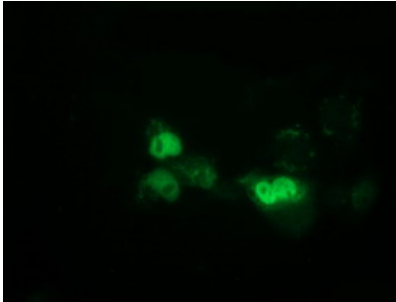
HEK293T cells transfected with either EPM2AIP1 (Myc-DDK-tagged) overexpress plasmid (Red) or empty vector control plasmid (Blue) were immunostained by anti-EPM2AIP1 antibody (M12427-2)



Flow cytometric Analysis of HeLa cells



Flow cytometric Analysis of Jurkat cells



Anti-EPM2AIP1 mouse monoclonal antibody (M12427-2) immunofluorescent staining of COS7 cells transiently transfected by pCMV6-ENTRY EPM2AIP1.

## Submit a product review to Biocompare.com

Submit a review of this product to Biocompare.com to receive a \$20 Amazon.com giftcard! Your reviews help your fellow scientists make the right decisions. Thank you for your contribution.



Anti-EPM2AIP1 Mouse Monoclonal Antibody [Clone ID: OTI1F11]

For Research Use Only. Not for use in diagnostic procedures.