

## Anti-ATP6V1F Mouse Monoclonal Antibody [Clone ID: OTI5F10]

Catalog Number: M12432-1

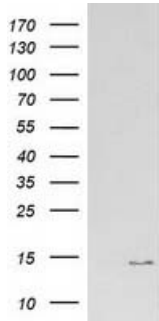
### Overview

Product Name	Anti-ATP6V1F Mouse Monoclonal Antibody [Clone ID: OTI5F10]
Reactive Species	Dog, Human, Monkey, Mouse, Rat
Description	Boster Bio ATP6V1F mouse monoclonal antibody, clone OTI5F10 (formerly 5F10). Catalog# M12432-1. Tested in FC, IF, IHC, WB. This antibody reacts with Human, Monkey, Mouse, Rat, Dog.
Application	Flow Cytometry, IF, IHC, WB
Clonality	Monoclonal OTI5F10
Formulation	PBS (pH 7.3) containing 1% stabilizing protein, 50% glycerol and 0.02% sodium azide. This antibody is supplied in a stabilized formulation. Compatibility with conjugation reactions depends on the chemistry of the conjugation method used. For conjugation methods that are not compatible with the stabilizing components present in this formulation, a carrier-free antibody format is required.
Storage Instructions	Store at -20°C as received.
Host	Mouse
Uniprot ID	Q16864

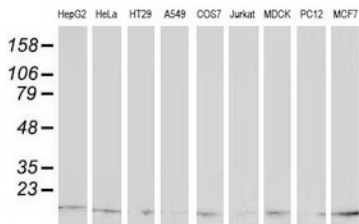
### Technical Details

Immunogen	Full length human recombinant protein of human ATP6V1F (NP_004222) produced in E.coli.
Isotype	IgG2a
Concentration	0.83 mg/ml
Purification	Purified from mouse ascites fluids or tissue culture supernatant by affinity chromatography (protein A/G)
Suggested Dilutions	WB 1:1000~2000 IHC 1:150 IF 1:100 Flow Cytometry 1:100

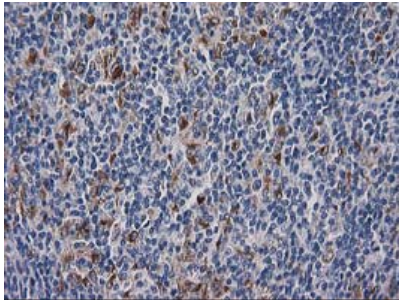
## Anti-ATP6V1F Mouse Monoclonal Antibody [Clone ID: OTI5F10] (M12432-1) Images



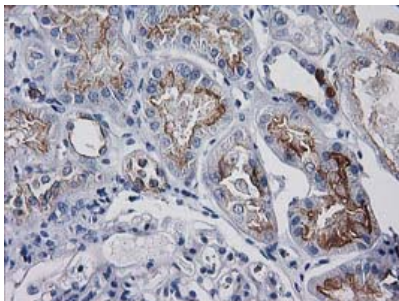
HEK293T cells were transfected with the pCMV6-ENTRY control (Left lane) or pCMV6-ENTRY ATP6V1F (Right lane) cDNA for 48 hrs and lysed. Equivalent amounts of cell lysates (5 ug per lane) were separated by SDS-PAGE and immunoblotted with anti-ATP6V1F.



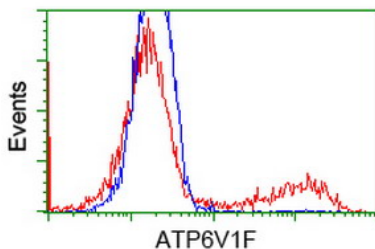
Western blot analysis of extracts (35ug) from 9 different cell lines by using anti-ATP6V1F monoclonal antibody (HepG2: human; HeLa: human; SVT2: mouse; A549: human; COS7: monkey; Jurkat: human; MDCK: canine; PC12: rat; MCF7: human).



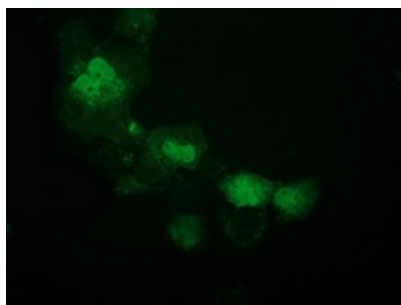
Immunohistochemical staining of paraffin-embedded Human lymphoma tissue using anti-ATP6V1F mouse monoclonal antibody. (Heat-induced epitope retrieval by 10mM citric buffer)



Immunohistochemical staining of paraffin-embedded Human Kidney tissue within the normal limits using anti-ATP6V1F mouse monoclonal antibody. (Heat-induced epitope retrieval by 10mM citric buffer)



HEK293T cells transfected with either ATP6V1F (Myc-DDK-tagged) overexpress plasmid (Red) or empty vector control plasmid (Blue) were immunostained by anti-ATP6V1F antibody (M12432-1)



Anti-ATP6V1F mouse monoclonal antibody (M12432-1)  
immunofluorescent staining of COS7 cells transiently  
transfected by pCMV6-ENTRY ATP6V1F.

## Submit a product review to Biocompare.com

Submit a review of this product to Biocompare.com to receive a \$20 Amazon.com giftcard! Your reviews help your fellow scientists make the right decisions. Thank you for your contribution.



Anti-ATP6V1F Mouse Monoclonal Antibody [Clone ID: OT15F10]

For Research Use Only. Not for use in diagnostic procedures.