

Anti-Histone H3 HIST1H3A Rabbit Monoclonal Antibody

Catalog Number: M12477-10

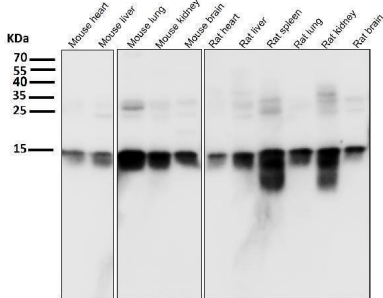
Overview

Product Name	Anti-Histone H3 HIST1H3A Rabbit Monoclonal Antibody
Reactive Species	Human, Mouse, Rat
Description	Boster Bio Anti-Histone H3 HIST1H3A Rabbit Monoclonal Antibody catalog # M12477-10. Tested in WB, IHC, ICC/IF applications. This antibody reacts with Human, Mouse, Rat.
Application	IF, IHC, ICC, WB
Clonality	Monoclonal HDE-8
Formulation	Rabbit IgG in stabilizing components, phosphate buffered saline, pH 7.4, 150mM NaCl, 0.02% sodium azide and 50% glycerol. *This antibody is supplied in a stabilized formulation. Compatibility with conjugation reactions depends on the chemistry of the conjugation method used. For conjugation methods that are not compatible with the stabilizing components present in this formulation, a carrier-free antibody format is required.
Storage Instructions	Store at -20°C for one year. For short term storage and frequent use, store at 4°C for up to one month. Avoid repeated freeze-thaw cycles.
Host	Rabbit
Uniprot ID	P68431

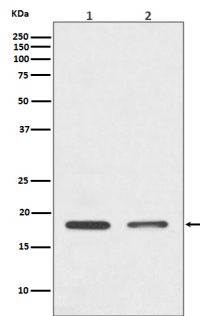
Technical Details

Immunogen	A synthesized peptide derived from human Histone H3
Isotype	Rabbit IgG
Form	Liquid
Concentration	0.5mg/ml
Purification	Affinity-chromatography
Suggested Dilutions	WB 1:500-2000 IHC 1:50-200 ICC/IF 1:50-200

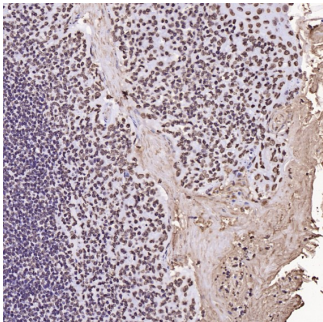
Anti-Histone H3 HIST1H3A Rabbit Monoclonal Antibody (M12477-10) Images



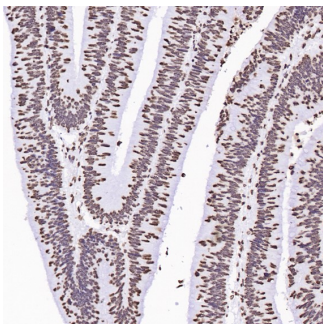
All lanes use the Antibody at 1:5K dilution for 1 hour at room temperature.



Western blot analysis of Histone H3 expression in (1) HeLa cell lysate; (2) 3T3 cell lysate.

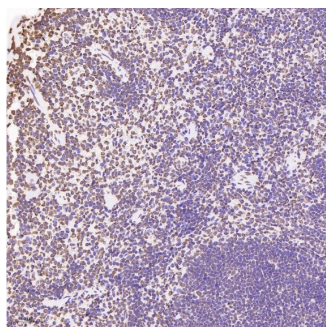
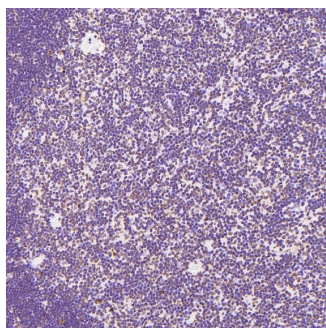


Immunohistochemical analysis of paraffin-embedded Human tonsil, using the Antibody at 1:2000 dilution.

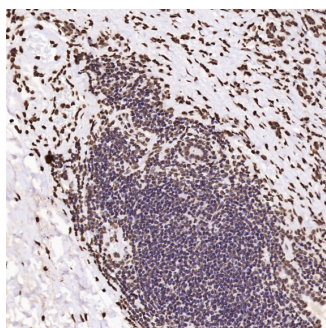


Immunohistochemical analysis of paraffin-embedded Human colon cancer, using the Antibody at 1:6000 dilution.

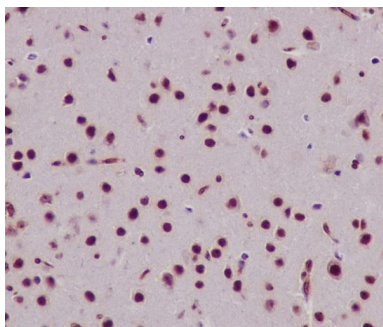
Immunohistochemical analysis of paraffin-embedded Rat thymus, using the Antibody at 1:3000 dilution.



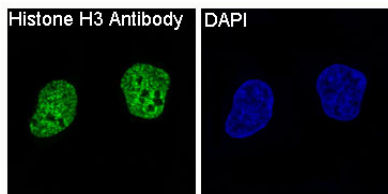
Immunohistochemical analysis of paraffin-embedded Mouse spleen, using the Antibody at 1:3000 dilution.



Immunohistochemical analysis of paraffin-embedded Human esophageal carcinoma, using the Antibody at 1:2000 dilution.



Immunohistochemical analysis of paraffin-embedded mouse brain, using Histone H3 Antibody.



Immunofluorescent analysis of HeLa cells, using Histone H3 Antibody.

2 Publications Citing This Product

1. PubMed ID: 15052685, Antiproliferative and proapoptotic effects of somatostatin on activated hepatic stellate cells

2. PubMed ID: 24503896, Role of endoplasmic reticulum stress in apoptosis of differentiated mouse podocytes induced by high glucose

Visit bosterbio.com/anti-histone-h3-rabbit-monoclonal-antibody-m12477-10-boster.html to see all 2 publications.

Submit a product review to Biocompare.com

Submit a review of this product to Biocompare.com to receive a \$20 Amazon.com giftcard! Your reviews help your fellow scientists make the right decisions. Thank you for your contribution.



Anti-Histone H3 HIST1H3A Rabbit Monoclonal Antibody

For Research Use Only. Not for use in diagnostic procedures.