

Anti-Histone H3 (acetyl K27) Rabbit Monoclonal Antibody

Catalog Number: M12477-15

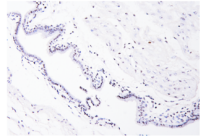
Overview

Product Name	Anti-Histone H3 (acetyl K27) Rabbit Monoclonal Antibody
Reactive Species	Human, Mouse, Rat
Description	Boster Bio Anti-Histone H3 (acetyl K27) Rabbit Monoclonal Antibody catalog # M12477-15. Tested in WB, IHC, ICC/IF, ChIP applications. This antibody reacts with Human, Mouse, Rat.
Application	ChIP, IF, IHC, ICC, WB
Clonality	Monoclonal 26H47
Formulation	Rabbit IgG in stabilizing components, phosphate buffered saline, pH 7.4, 150mM NaCl, 0.02% sodium azide and 50% glycerol. *This antibody is supplied in a stabilized formulation. Compatibility with conjugation reactions depends on the chemistry of the conjugation method used. For conjugation methods that are not compatible with the stabilizing components present in this formulation, a carrier-free antibody format is required.
Storage Instructions	Store at -20°C for one year. For short term storage and frequent use, store at 4°C for up to one month. Avoid repeated freeze-thaw cycles.
Host	Rabbit
Uniprot ID	P68431/P84243/Q16695/Q6NXT2/Q71DI3

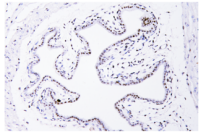
Technical Details

Immunogen	A synthesized peptide derived from Histone H3 (acetyl K27)
Isotype	IgG
Form	Liquid
Concentration	0.5mg/ml
Purification	Affinity-chromatography
Suggested Dilutions	WB 1:500-2000 IHC 1:50-200 ICC/IF 1:50-200 ChIP 1:50

Anti-Histone H3 (acetyl K27) Rabbit Monoclonal Antibody (M12477-15) Images

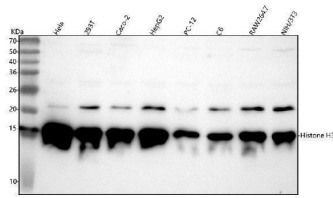


normal placenta



preterm placenta

IHC analysis of Histone H3 (acetyl K27) using anti-Histone H3 (acetyl K27) antibody (M12477-15). Histone H3 (acetyl K27) was detected in a paraffin-embedded section of human brain tissue. Heat mediated antigen retrieval was performed in EDTA buffer (pH 8.0, epitope retrieval solution). The tissue section was blocked with 10% goat serum. The tissue section was then incubated with 1:200 rabbit anti-Histone H3 (acetyl K27) (M12477-15) overnight at 4°C. Polymer anti-rabbit IgG-HRP IHC detection kit was used as secondary antibody and incubated for 45 minutes at 37°C. The tissue section was developed using HRP Conjugated Rabbit IgG Super Vision Assay Kit (Catalog # SV0002) with DAB as the chromogen.



Western blot analysis of Histone H3 using anti-Histone H3 antibody (M12477-15). Electrophoresis was performed on a 5-20% SDS-PAGE gel at 70V (Stacking gel) / 90V (Resolving gel) for 2-3 hours. The sample well of each lane was loaded with 30 ug of sample under reducing conditions. Lane 1: human Hela whole cell lysates, Lane 2: human 293T whole cell lysates, Lane 3: human CACO-2 whole cell lysates, Lane 4: human HepG2 whole cell lysates, Lane 5: rat PC-12 whole cell lysates, Lane 6: rat C6 whole cell lysates, Lane 7: mouse RAW264.7 whole cell lysates, Lane 8: mouse NIH/3T3 whole cell lysates. After electrophoresis, proteins were transferred to a nitrocellulose membrane at 150 mA for 50-90 minutes. Blocked the membrane with 5% non-fat milk/TBS for 1.5 hour at RT. The membrane was incubated with rabbit anti-Histone H3 antigen affinity purified monoclonal antibody (Catalog # M12477-15) at 1:500 overnight at 4°C, then washed with TBS-0.1%Tween 3 times with 5 minutes each and probed with a goat anti-rabbit IgG-HRP secondary antibody at a dilution of 1:500 for 1.5 hour at RT. The signal is developed using an Enhanced Chemiluminescent detection (ECL) kit (Catalog # EK1002) with Tanon 5200 system. A specific band was detected for Histone H3 at approximately 15 kDa. The expected band size for Histone H3 is at 15 kDa.

Submit a product review to [Biocompare.com](https://www.biocompare.com)

Submit a review of this product to [Biocompare.com](https://www.biocompare.com) to receive a \$20 Amazon.com giftcard! Your reviews help your fellow scientists make the right decisions. Thank you for your contribution.



Biocompare PI:
PRODUCT INVESTIGATOR



Anti-Histone H3 (acetyl K27) Rabbit Monoclonal Antibody

For Research Use Only. Not for use in diagnostic procedures.