

Anti-WDR61 Mouse Monoclonal Antibody [Clone ID: OTI4C4]

Catalog Number: M12524

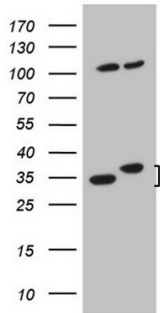
Overview

Product Name	Anti-WDR61 Mouse Monoclonal Antibody [Clone ID: OTI4C4]
Reactive Species	Human, Mouse, Rat
Description	Boster Bio WDR61 mouse monoclonal antibody, clone OTI4C4 (formerly 4C4). Catalog# M12524. Tested in IHC, WB. This antibody reacts with Human, Mouse, Rat.
Application	IHC, WB
Clonality	Monoclonal OTI4C4
Formulation	PBS (pH 7.3) containing 1% stabilizing protein, 50% glycerol and 0.02% sodium azide. This antibody is supplied in a stabilized formulation. Compatibility with conjugation reactions depends on the chemistry of the conjugation method used. For conjugation methods that are not compatible with the stabilizing components present in this formulation, a carrier-free antibody format is required.
Storage Instructions	Store at -20°C as received.
Host	Mouse
Uniprot ID	Q9GZS3

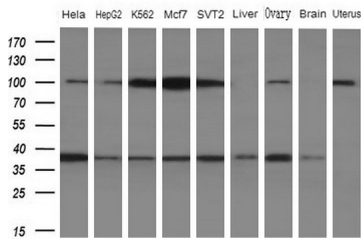
Technical Details

Immunogen	Human recombinant protein fragment corresponding to amino acids 92-305 of human WDR61 (NP_079510) produced in E.coli.
Isotype	IgG1
Concentration	1 mg/ml
Purification	Purified from mouse ascites fluids or tissue culture supernatant by affinity chromatography (protein A/G)
Suggested Dilutions	WB: 1:2000 IHC: 1:150

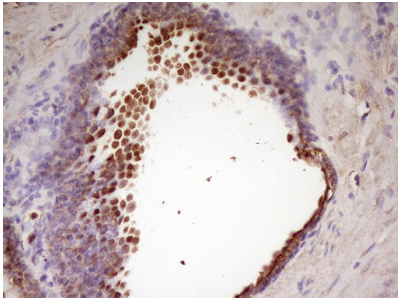
Anti-WDR61 Mouse Monoclonal Antibody [Clone ID: OTI4C4] (M12524) Images



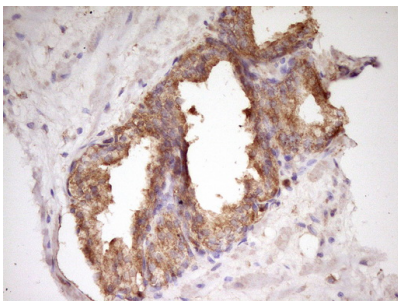
HEK293T cells were transfected with the pCMV6-ENTRY control (Left lane) or pCMV6-ENTRY WDR61 (Right lane) cDNA for 48 hrs and lysed. Equivalent amounts of cell lysates (5 ug per lane) were separated by SDS-PAGE and immunoblotted with anti-WDR61.



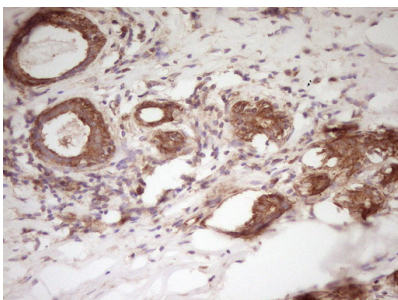
Western blot analysis of extracts (10ug) from 5 different cell lines and 4 human tissue by using anti-WDR61 monoclonal antibody (1: HeLa; 2: HepG2; 3: K562; 4: Mcf7; 5: SVT2; 6: Liver; 7: Testis; 8: Brain; 9: Uterus) at 1:200 dilution.



Immunohistochemical staining of paraffin-embedded Human prostate tissue within the normal limits using anti-WDR61 mouse monoclonal antibody. (Heat-induced epitope retrieval by 1 mM EDTA in 10mM Tris)



Immunohistochemical staining of paraffin-embedded Carcinoma of Human prostate tissue using anti-WDR61 mouse monoclonal antibody. (Heat-induced epitope retrieval by 1 mM EDTA in 10mM Tris)



Immunohistochemical staining of paraffin-embedded Carcinoma of Human kidney tissue using anti-WDR61 mouse monoclonal antibody. (Heat-induced epitope retrieval by 1 mM EDTA in 10mM Tris)

Submit a product review to Biocompare.com

Submit a review of this product to Biocompare.com to receive a \$20 Amazon.com giftcard! Your reviews help your fellow scientists make the right decisions. Thank you for your contribution.



Anti-WDR61 Mouse Monoclonal Antibody [Clone ID: OT14C4]

For Research Use Only. Not for use in diagnostic procedures.