

Anti-Acetyl-Histone H2B (Lys20) HIST1H2BB Rabbit Monoclonal Antibody, Clone#RM235

Catalog Number: M12718

Overview

Product Name	Anti-Acetyl-Histone H2B (Lys20) HIST1H2BB Rabbit Monoclonal Antibody, Clone#RM235
Reactive Species	Human, Vertebrates
Description	Boster Bio Anti-Acetyl-Histone H2B (Lys20) HIST1H2BB Rabbit Monoclonal Antibody, Clone#RM235 (Catalog # M12718). Tested in WB, ELISA, Luminex, ICC applications. This antibody reacts with Human, Vertebrates.
Application	ELISA, ICC, WB, Luminex
Clonality	Monoclonal RM235
Formulation	50% Glycerol/PBS with 1% BSA and 0.09% sodium azide
Storage Instructions	Store at -20°C for one year. Avoid repeated freeze-thaw cycles.
Host	Rabbit
Uniprot ID	P33778

Technical Details

Immunogen	An acetyl-peptide corresponding to Acetyl-Histone H2B (Lys20).
Cross Reactivity	This antibody reacts to Histone H2B acetylated at Lysine 20 (K20ac). No cross-reactivity with non-modified Lysine 20 or other acetylated Lysines in histone H2B.
Isotype	Rabbit IgG
Form	Liquid
Concentration	1 mg/mL
Purification	Protein A affinity purified from an animal origin-free culture supernatant
Suggested Dilutions	<p>Dilute the sample so that the expected range of concentrations fall within the detection range of this kit.</p> <p>If the expected range of concentration is unknown, a pilot test should be conducted to decide the optimal dilution ratio for your samples.</p> <p>Some PubMed article(s) citing the expression level of this target are as follows:</p> <p>Boster Bio's internal QC testing used:</p> <p>WB: 0.5 ug/mL – 2 ug/mL</p> <p>ELISA: 0.2 ug/mL – 1 ug/mL</p> <p>Luminex: 0.1 ug/mL – 0.5 ug/mL</p> <p>Immunocytochemistry: 1 ug/mL- 2 ug/mL.</p>

Anti-Acetyl-Histone H2B (Lys20) HIST1H2BB Rabbit Monoclonal Antibody, Clone#RM235 (M12718) Images

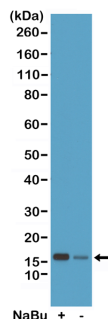


Figure 1. Western Blotting result
Western Blot of acid extracts from HeLa cells treated (+) or untreated (-) with sodium butyrate, using RM235 at 0.5 ug/mL.

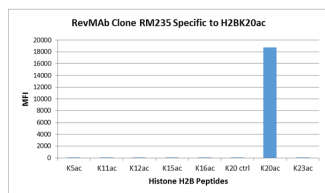


Figure 2. Specificity Test result
RM235 specifically reacts to Histone H2B acetylated at Lysine 20 (K20ac). No cross reactivity with non-modified Lysine 20 or other acetylated Lysines in histone H2B.

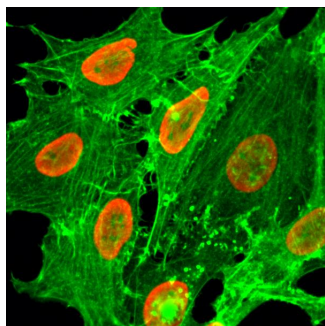


Figure 3. ICC result
Immunocytochemical staining of HeLa cells treated with sodium butyrate, using anti-Acetyl-Histone H2B (Lys20) Rabbit Monoclonal Antibody (Clone RM235) (red). Actin filaments have been labeled with fluorescein phalloidin (green).

Submit a product review to Biocompare.com

Submit a review of this product to Biocompare.com to receive a \$20 Amazon.com giftcard! Your reviews help your fellow scientists make the right decisions. Thank you for your contribution.



Anti-Acetyl-Histone H2B (Lys20) HIST1H2BB Rabbit Monoclonal Antibody, Clone#RM235