

## Anti-GRPEL1 Mouse Monoclonal Antibody [Clone ID: OTI6G6]

Catalog Number: M12830

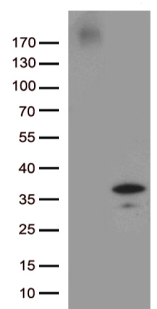
### Overview

|                      |  |
|----------------------|--|
| Product Name         | Anti-GRPEL1 Mouse Monoclonal Antibody [Clone ID: OTI6G6]   |
| Reactive Species     | Human, Mouse, Rat  |
| Description          | Boster Bio GRPEL1 mouse monoclonal antibody, clone OTI6G6. Catalog# M12830. Tested in WB. This antibody reacts with Human, Mouse, Rat.   |
| Application          | WB   |
| Clonality            | Monoclonal OTI6G6  |
| Formulation          | PBS (pH 7.3) containing 1% stabilizing protein, 50% glycerol and 0.02% sodium azide. This antibody is supplied in a stabilized formulation. Compatibility with conjugation reactions depends on the chemistry of the conjugation method used. For conjugation methods that are not compatible with the stabilizing components present in this formulation, a carrier-free antibody format is required. |
| Storage Instructions | Store at -20°C as received.  |
| Host                 | Mouse  |
| Uniprot ID           | Q9HAV7   |

### Technical Details

|                     |  |
|---------------------|--|
| Immunogen           | Human recombinant protein fragment corresponding to amino acids 28-217 of human GRPEL1 (NP_079472) produced in E.coli. |
| Isotype             | IgG1   |
| Concentration       | 1 mg/ml  |
| Purification        | Purified from mouse ascites fluids or tissue culture supernatant by affinity chromatography (protein A/G)              |
| Suggested Dilutions | WB 1:2000  |

## Anti-GRPEL1 Mouse Monoclonal Antibody [Clone ID: OTI6G6] (M12830) Images



HEK293T cells were transfected with the pCMV6-ENTRY control (Left lane) or pCMV6-ENTRY GRPEL1 (Right lane) cDNA for 48 hrs and lysed. Equivalent amounts of cell lysates (5 ug per lane) were separated by SDS-PAGE and immunoblotted with anti-GRPEL1.

### Submit a product review to Biocompare.com

Submit a review of this product to Biocompare.com to receive a \$20 Amazon.com giftcard! Your reviews help your fellow scientists make the right decisions. Thank you for your contribution.



Anti-GRPEL1 Mouse Monoclonal Antibody [Clone ID: OTI6G6]

For Research Use Only. Not for use in diagnostic procedures.