

Anti-SCIMP Purified Monoclonal Antibody

Catalog Number: M12849

About SCIMP

SCIMP (SLP adaptor and Csk interacting membrane protein), also known as Nvl, is a palmitoylated transmembrane adaptor protein expressed in professional antigen presenting cells, most prominently in the lymph nodes and spleen. It is associated with tetraspanin-enriched microdomains (together with MHC II). There is a close relationship between SCIMP and tyrosinkinase Lyn, which is constitutively bound to it by its SH3 domain. After MHC II-mediated stimulation in the immunological synapse SCIMP becomes phosphorylated at several tyrosine residues and provides docking sites for Grb2 and SLP65 or SLP76 adaptors transducing the signal downstream, as well as for the kinase Csk with modulatory roles.

Overview

Product Name	Anti-SCIMP Purified Monoclonal Antibody
Reactive Species	Human
Description	Boster Bio Anti-SCIMP Purified Monoclonal Antibody (Catalog# M12849). Tested in Flow Cytometry, IP, WB, ICC application(s). This antibody reacts with Human.
Application	Flow Cytometry, IP, ICC, WB
Clonality	Monoclonal NVL-07
Formulation	Phosphate buffered saline (PBS), pH 7.4, 15 mM sodium azide
Storage Instructions	Store at 2-8°C. Do not freeze.
Host	Mouse
Uniprot ID	Q6UWF3

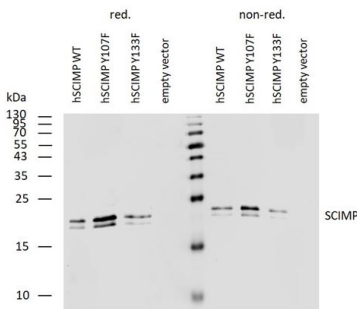
Technical Details

Immunogen	Recombinant intracellular part of human SCIMP. The mouse monoclonal antibody NVL-07 recognizes intracellular part of human transmembrane adaptor SCIMP. This protein of 17 kDa predicted Mw migrates as a 22 kDa band on SDS PAGE.
Predicted Reactive Species	Primate
Cross Reactivity	As in case with other anti-CD170 antibodies, this antibody cross-reacts with Siglec-14, whose first two Ig domains are almost identical to those of CD170.
Isotype	Mouse IgG2a
Form	Liquid
Concentration	1 mg/ml
Purification	Purified by protein-A affinity chromatography.

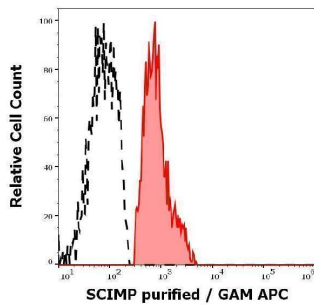
Suggested Dilutions

Flow cytometry: Recommended dilution: 1-5 ug/ml. Intracellular staining.
Western blotting: Recommended dilution: 1-2 ug/ml.

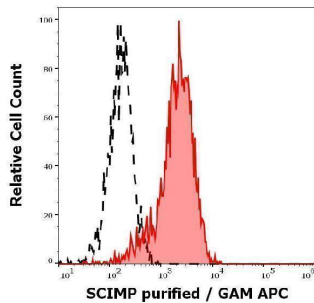
Anti-SCIMP Purified Monoclonal Antibody (M12849) Images



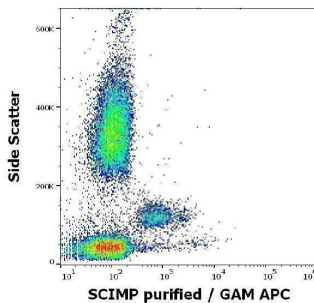
Western blotting analysis of human SCIMP using mouse monoclonal antibody NVL-07 on lysates of human SCIMP transfectants under reducing and non-reducing conditions. Nitrocellulose membrane was probed with 2 µg/ml of mouse monoclonal antibody followed by IRDye800-conjugated anti-mouse secondary antibody. SCIMP was detected around 17-22 kDa.



Separation of human monocytes (red-filled) from SCIMP negative lymphocytes (black-dashed) in flow cytometry analysis (intracellular staining) of human peripheral whole blood stained using anti-SCIMP (NVL-07) purified antibody (concentration in sample 1.67 ug/ml, GAM APC).

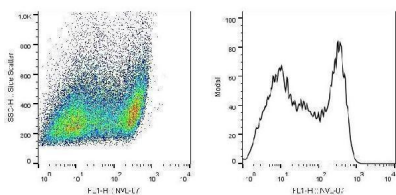


Separation of HeLa cells stained using anti-SCIMP (NVL-07) purified antibody (concentration in sample 5 ug/ml, GAM APC, red-filled) from HeLa cells unstained by primary antibody (GAM APC, black-dashed) in flow cytometry analysis (intracellular staining).



Flow cytometry intracellular staining pattern of human peripheral whole blood stained using anti-SCIMP (NVL-07) purified antibody (concentration in sample 1.67 ug/ml, GAM APC).

Flow cytometry analysis (intracellular staining) of SCIMP in a population of HEK-293T-SCIMP transfectants using monoclonal antibody (clone NVL-07, purified). The staining pattern reflects heterogeneity in the cell population regarding transfection efficiency.



Submit a product review to Biocompare.com

Submit a review of this product to Biocompare.com to receive a \$20 Amazon.com giftcard! Your reviews help your fellow scientists make the right decisions. Thank you for your contribution.



Anti-SCIMP Purified Monoclonal Antibody

For Research Use Only. Not for use in diagnostic procedures.