

Anti-ATXN7L1 Mouse Monoclonal Antibody [Clone ID: OTI4F6]

Catalog Number: M12910

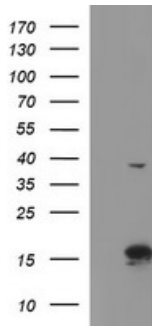
Overview

Product Name	Anti-ATXN7L1 Mouse Monoclonal Antibody [Clone ID: OTI4F6]
Reactive Species	Human, Mouse, Rat
Description	Boster Bio ATXN7L1 mouse monoclonal antibody, clone OTI4F6 (formerly 4F6). Catalog# M12910. Tested in IHC, WB. This antibody reacts with Human, Mouse, Rat.
Application	IHC, WB
Clonality	Monoclonal OTI4F6
Formulation	PBS (PH 7.3) containing 1% BSA, 50% glycerol and 0.02% sodium azide.
Storage Instructions	Store at -20°C as received.
Host	Mouse
Uniprot ID	Q9ULK2

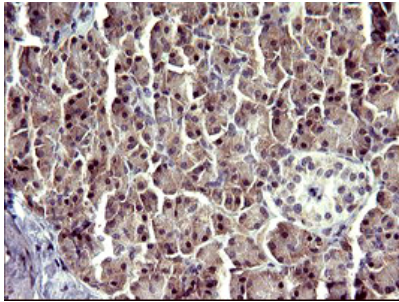
Technical Details

Immunogen	Full length human recombinant protein of human ATXN7L1 (NP_689962) produced in HEK293T cell.
Isotype	IgG1
Concentration	1 mg/ml
Purification	Purified from mouse ascites fluids or tissue culture supernatant by affinity chromatography (protein A/G)
Suggested Dilutions	Dilute the sample so that the expected range of concentrations fall within the detection range of this kit. If the expected range of concentration is unknown, a pilot test should be conducted to decide the optimal dilution ratio for your samples. Some PubMed article(s) citing the expression level of this target are as follows: For protocols, please visit https://www.bosterbio.com/protocol-and-troubleshooting/

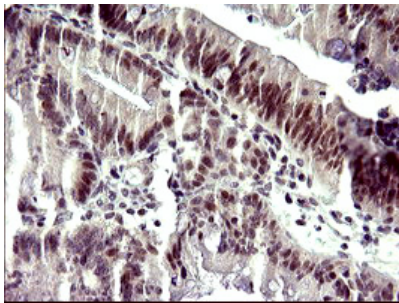
Anti-ATXN7L1 Mouse Monoclonal Antibody [Clone ID: OTI4F6] (M12910) Images



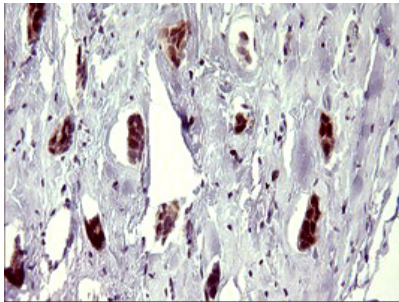
HEK293T cells were transfected with the pCMV6-ENTRY control (Left lane) or pCMV6-ENTRY ATXN7L1 (Right lane) cDNA for 48 hrs and lysed. Equivalent amounts of cell lysates (5 ug per lane) were separated by SDS-PAGE and immunoblotted with anti-ATXN7L1.



Immunohistochemical staining of paraffin-embedded Human pancreas tissue within the normal limits using anti-ATXN7L1 mouse monoclonal antibody. (Heat-induced epitope retrieval by 10mM citric buffer)



Immunohistochemical staining of paraffin-embedded Carcinoma of Human pancreas tissue using anti-ATXN7L1 mouse monoclonal antibody. (Heat-induced epitope retrieval by 10mM citric buffer)



Immunohistochemical staining of paraffin-embedded Adenocarcinoma of Human breast tissue using anti-ATXN7L1 mouse monoclonal antibody. (Heat-induced epitope retrieval by 10mM citric buffer)

Submit a product review to [Biocompare.com](https://www.biocompare.com)

Submit a review of this product to [Biocompare.com](https://www.biocompare.com) to receive a \$20 Amazon.com giftcard! Your reviews help your fellow scientists make the right decisions. Thank you for your contribution.



Anti-ATXN7L1 Mouse Monoclonal Antibody [Clone ID: OTI4F6]