

## Anti-RPC62 (POLR3C) Mouse Monoclonal Antibody [Clone ID: OTI2H1]

Catalog Number: M12992

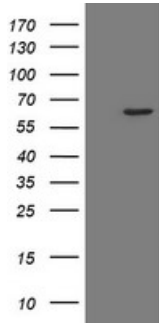
### Overview

Product Name	Anti-RPC62 (POLR3C) Mouse Monoclonal Antibody [Clone ID: OTI2H1]
Reactive Species	Human, Mouse, Rat
Description	Boster Bio POLR3C (RPC62) mouse monoclonal antibody, clone OTI2H1 (formerly 2H1). Catalog# M12992. Tested in IF, IHC, WB. This antibody reacts with Human, Mouse, Rat.
Application	IF, IHC, WB
Clonality	Monoclonal OTI2H1
Formulation	PBS (pH 7.3) containing 1% stabilizing protein, 50% glycerol and 0.02% sodium azide. This antibody is supplied in a stabilized formulation. Compatibility with conjugation reactions depends on the chemistry of the conjugation method used. For conjugation methods that are not compatible with the stabilizing components present in this formulation, a carrier-free antibody format is required.
Storage Instructions	Store at -20°C as received.
Host	Mouse
Uniprot ID	Q9BUI4

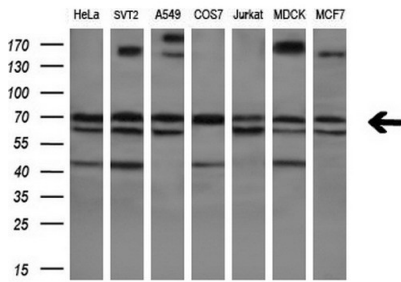
### Technical Details

Immunogen	Full length human recombinant protein of human POLR3C (NP_006459) produced in HEK293T cell.
Isotype	IgG1
Concentration	1 mg/ml
Purification	Purified from mouse ascites fluids or tissue culture supernatant by affinity chromatography (protein A/G)
Suggested Dilutions	WB 1:2000 IHC 1:150 IF 1:100

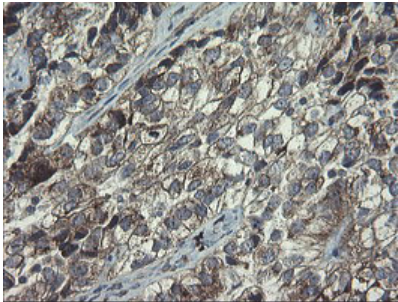
## Anti-RPC62 (POLR3C) Mouse Monoclonal Antibody [Clone ID: OTI2H1] (M12992) Images



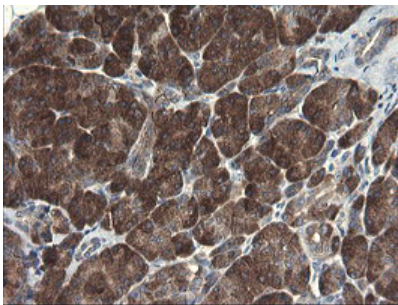
HEK293T cells were transfected with the pCMV6-ENTRY control (Left lane) or pCMV6-ENTRY POLR3C (Right lane) cDNA for 48 hrs and lysed. Equivalent amounts of cell lysates (5 ug per lane) were separated by SDS-PAGE and immunoblotted with anti-POLR3C.



Western blot analysis of extracts (10ug) from 7 different cell lines by using anti-POLR3C monoclonal antibody (1:200).

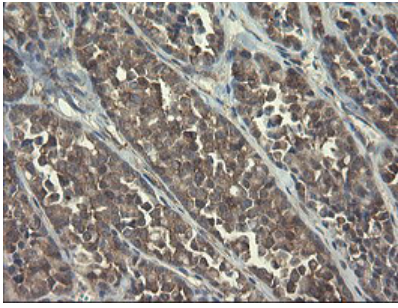


Immunohistochemical staining of paraffin-embedded Adenocarcinoma of Human ovary tissue using anti-POLR3C mouse monoclonal antibody. (Heat-induced epitope retrieval by 10mM citric buffer)

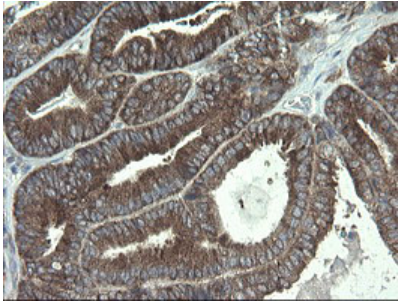


Immunohistochemical staining of paraffin-embedded Human pancreas tissue within the normal limits using anti-POLR3C mouse monoclonal antibody. (Heat-induced epitope retrieval by 10mM citric buffer)

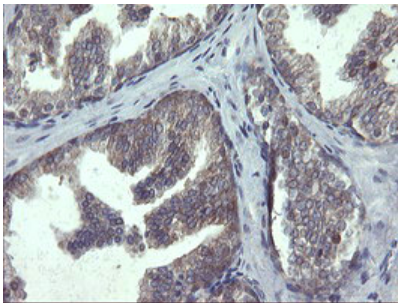
Immunohistochemical staining of paraffin-embedded Carcinoma of Human thyroid tissue using anti-POLR3C mouse monoclonal antibody. (Heat-induced epitope retrieval by 10mM citric buffer)



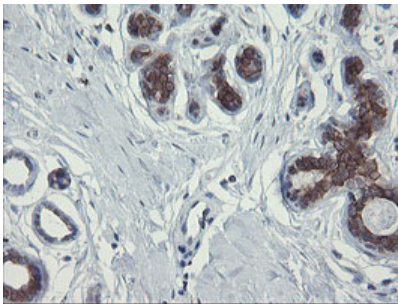
Immunohistochemical staining of paraffin-embedded Adenocarcinoma of Human endometrium tissue using anti-POLR3C mouse monoclonal antibody. (Heat-induced epitope retrieval by 10mM citric buffer)



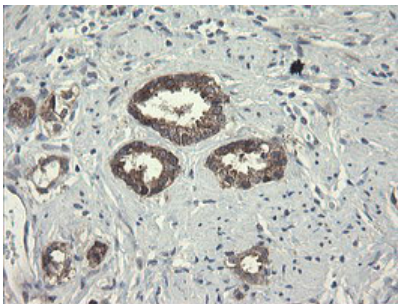
Immunohistochemical staining of paraffin-embedded Human prostate tissue within the normal limits using anti-POLR3C mouse monoclonal antibody. (Heat-induced epitope retrieval by 10mM citric buffer)



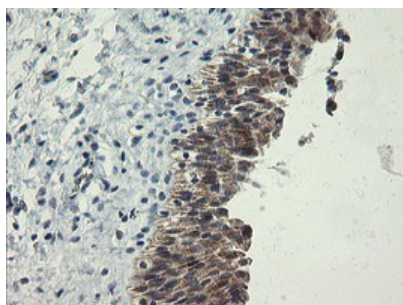
Immunohistochemical staining of paraffin-embedded Human breast tissue within the normal limits using anti-POLR3C mouse monoclonal antibody. (Heat-induced epitope retrieval by 10mM citric buffer)



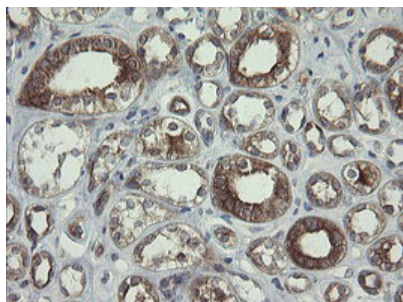
Immunohistochemical staining of paraffin-embedded Carcinoma of Human prostate tissue using anti-POLR3C mouse monoclonal antibody. (Heat-induced epitope retrieval by 10mM citric buffer)



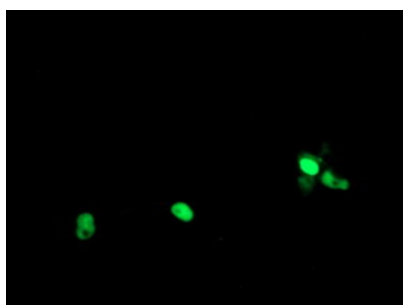
Immunohistochemical staining of paraffin-embedded Human bladder tissue within the normal limits using anti-POLR3C mouse monoclonal antibody. (Heat-induced epitope retrieval by 10mM citric buffer)



mouse monoclonal antibody. (Heat-induced epitope retrieval by 10mM citric buffer)



Immunohistochemical staining of paraffin-embedded Human Kidney tissue within the normal limits using anti-POLR3C mouse monoclonal antibody. (Heat-induced epitope retrieval by 10mM citric buffer)



Anti-POLR3C mouse monoclonal antibody (M12992) immunofluorescent staining of COS7 cells transiently transfected by pCMV6-ENTRY POLR3C.

## Submit a product review to [Biocompare.com](https://www.biocompare.com)

Submit a review of this product to [Biocompare.com](https://www.biocompare.com) to receive a \$20 Amazon.com giftcard! Your reviews help your fellow scientists make the right decisions. Thank you for your contribution.



Anti-RPC62 (POLR3C) Mouse Monoclonal Antibody [Clone ID: OTI2H1]

For Research Use Only. Not for use in diagnostic procedures.