

Anti-GCET2 Monoclonal Antibody

Catalog Number: M12995

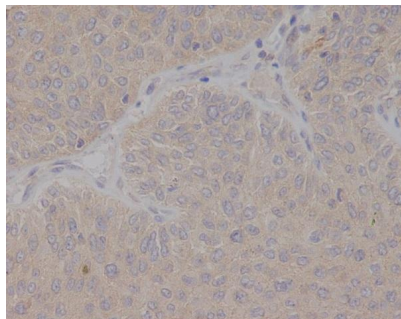
Overview

Product Name	Anti-GCET2 Monoclonal Antibody
Reactive Species	Human
Description	Boster Bio Anti-GCET2 Monoclonal Antibody catalog # M12995. Tested in IHC, ICC/IF, Flow Cytometry applications. This antibody reacts with Human.
Application	Flow Cytometry, IF, IHC, ICC
Clonality	Monoclonal AFHF-7
Formulation	Rabbit IgG in stabilizing components, phosphate buffered saline, pH 7.4, 150mM NaCl, 0.02% sodium azide and 50% glycerol. *This antibody is supplied in a stabilized formulation. Compatibility with conjugation reactions depends on the chemistry of the conjugation method used. For conjugation methods that are not compatible with the stabilizing components present in this formulation, a carrier-free antibody format is required.
Storage Instructions	Store at -20°C for one year. For short term storage and frequent use, store at 4°C for up to one month. Avoid repeated freeze-thaw cycles.
Host	Rabbit
Uniprot ID	Q8N6F7

Technical Details

Immunogen	A synthesized peptide derived from human GCET2 Involved in the negative regulation of lymphocyte motility. It mediates the migration-inhibitory effects of IL6. Serves as a positive regulator of the RhoA signaling pathway. Enhancement of RhoA activation results in inhibition of lymphocyte and lymphoma cell motility by activation of its downstream effector ROCK. Is a regulator of B-cell receptor signaling, that acts through SYK kinase activation.
Isotype	Rabbit IgG
Form	Liquid
Concentration	0.5mg/ml
Purification	Affinity-chromatography
Suggested Dilutions	IHC 1:100-1:500 ICC/IF 1:100-1:500 FC 1:100

Anti-GCET2 Monoclonal Antibody (M12995) Images



Immunohistochemical analysis of paraffin-embedded human bladder cancer, using GCET2 Antibody.

Submit a product review to Biocompare.com

Submit a review of this product to Biocompare.com to receive a \$20 Amazon.com giftcard! Your reviews help your fellow scientists make the right decisions. Thank you for your contribution.



Anti-GCET2 Monoclonal Antibody

For Research Use Only. Not for use in diagnostic procedures.