

Anti-GCET2 Rabbit Monoclonal Antibody

Catalog Number: M12995-1

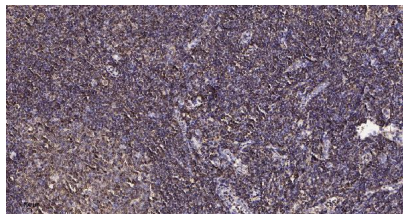
Overview

Product Name	Anti-GCET2 Rabbit Monoclonal Antibody
Reactive Species	Human
Description	This Recombinant Rabbit Monoclonal Antibody detects endogenous levels of GCET2 protein. Validated for research with IHC,IF/ICC,Flow Cyt applications. Anti GCET2 is reactive for Human samples
Application	Flow Cytometry, IF, IHC, ICC
Clonality	Monoclonal
Formulation	PBS, 50% glycerol, 0.05% Proclin 300, 0.05% stabilizing protein This antibody is supplied in a stabilized formulation. Compatibility with conjugation reactions depends on the chemistry of the conjugation method used. For conjugation methods that are not compatible with the stabilizing components present in this formulation, a carrier-free antibody format is required.
Storage Instructions	Store at -20°C/1 year
Host	Rabbit
Uniprot ID	Q8N6F7

Technical Details

Isotype	IgG, Kappa
Purification	Protein A
Suggested Dilutions	IHC 1:100-1:300 ICC/IF 1:100-1:300 FC 1:100-1:300

Anti-GCET2 Rabbit Monoclonal Antibody (M12995-1) Images



Immunohistochemical analysis of paraffin-embedded human tonsil tissue. 1, primary Antibody was diluted at 1:200(4°C, overnight). 2, EDTA pH 9.0 was used for antibody retrieval(>98°C, 20min). 3, Secondary antibody was diluted at 1:200(room temperature, 30min).

Submit a product review to Biocompare.com

Submit a review of this product to Biocompare.com to receive a \$20 Amazon.com giftcard! Your reviews help your fellow scientists make the right decisions. Thank you for your contribution.



Anti-GCET2 Rabbit Monoclonal Antibody

For Research Use Only. Not for use in diagnostic procedures.