

## Anti-OSGEP Mouse Monoclonal Antibody [Clone ID: OTI8B3]

Catalog Number: M13000

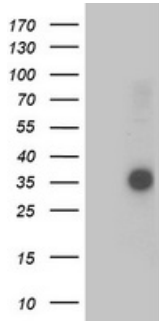
### Overview

Product Name	Anti-OSGEP Mouse Monoclonal Antibody [Clone ID: OTI8B3]
Reactive Species	Human, Mouse, Rat
Description	Boster Bio OSGEP mouse monoclonal antibody, clone OTI8B3 (formerly 8B3). Catalog# M13000. Tested in IF, IHC, WB. This antibody reacts with Human, Mouse, Rat.
Application	IF, IHC, WB
Clonality	Monoclonal OTI8B3
Formulation	PBS (pH 7.3) containing 1% stabilizing protein, 50% glycerol and 0.02% sodium azide. This antibody is supplied in a stabilized formulation. Compatibility with conjugation reactions depends on the chemistry of the conjugation method used. For conjugation methods that are not compatible with the stabilizing components present in this formulation, a carrier-free antibody format is required.
Storage Instructions	Store at -20°C as received.
Host	Mouse
Uniprot ID	Q9NPF4

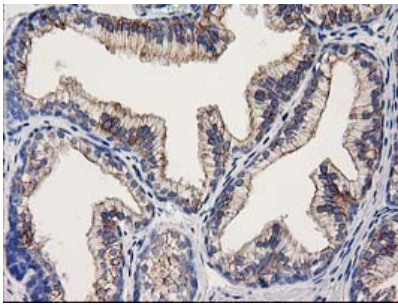
### Technical Details

Immunogen	Human recombinant protein fragment corresponding to amino acids 1-335 of human OSGEP (NP_060277) produced in E.coli.
Isotype	IgG1
Concentration	0.58 mg/ml
Purification	Purified from mouse ascites fluids or tissue culture supernatant by affinity chromatography (protein A/G)
Suggested Dilutions	WB 1:500 IHC 1:150 IF 1:100

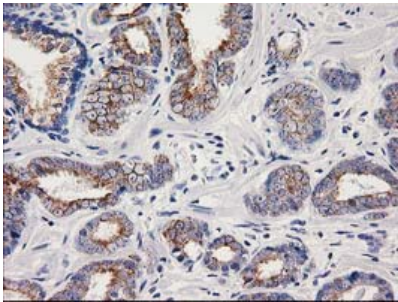
## Anti-OSGEP Mouse Monoclonal Antibody [Clone ID: OTI8B3] (M13000) Images



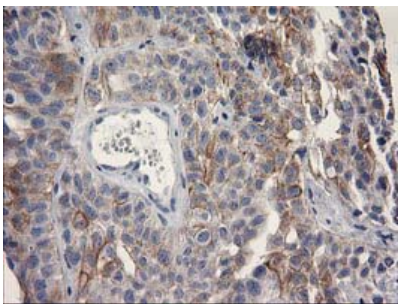
HEK293T cells were transfected with the pCMV6-ENTRY control (Left lane) or pCMV6-ENTRY OSGEP (Right lane) cDNA for 48 hrs and lysed. Equivalent amounts of cell lysates (5 ug per lane) were separated by SDS-PAGE and immunoblotted with anti-OSGEP.



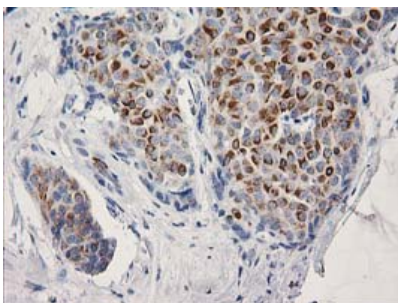
Immunohistochemical staining of paraffin-embedded Human prostate tissue within the normal limits using anti-OSGEP mouse monoclonal antibody. (Heat-induced epitope retrieval by 10mM citric buffer)



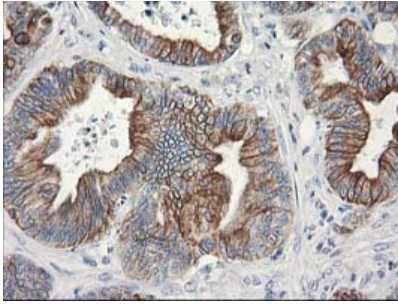
Immunohistochemical staining of paraffin-embedded Carcinoma of Human prostate tissue using anti-OSGEP mouse monoclonal antibody. (Heat-induced epitope retrieval by 10mM citric buffer)



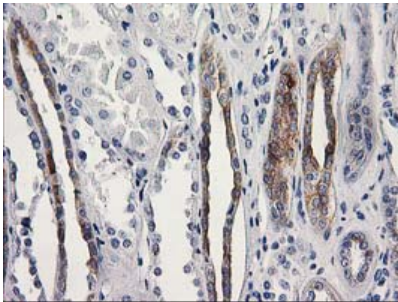
Immunohistochemical staining of paraffin-embedded Carcinoma of Human bladder tissue using anti-OSGEP mouse monoclonal antibody. (Heat-induced epitope retrieval by 10mM citric buffer)



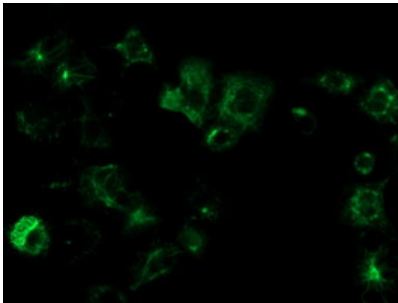
Immunohistochemical staining of paraffin-embedded Adenocarcinoma of Human breast tissue using anti-OSGEP mouse monoclonal antibody. (Heat-induced epitope retrieval by 10mM citric buffer)



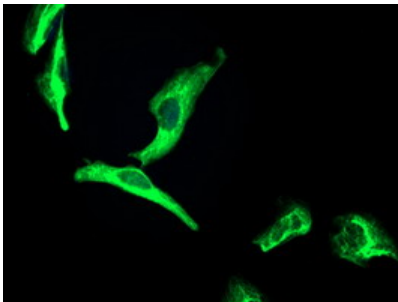
Immunohistochemical staining of paraffin-embedded Adenocarcinoma of Human colon tissue using anti-OSGEP mouse monoclonal antibody. (Heat-induced epitope retrieval by 10mM citric buffer)



Immunohistochemical staining of paraffin-embedded Human Kidney tissue within the normal limits using anti-OSGEP mouse monoclonal antibody. (Heat-induced epitope retrieval by 10mM citric buffer)



Anti-OSGEP mouse monoclonal antibody (M13000) immunofluorescent staining of COS7 cells transiently transfected by pCMV6-ENTRY OSGEP.



Immunofluorescent staining of HeLa cells using anti-OSGEP mouse monoclonal antibody (M13000).

## Submit a product review to [Biocompare.com](https://www.biocompare.com)

Submit a review of this product to [Biocompare.com](https://www.biocompare.com) to receive a \$20 Amazon.com giftcard! Your reviews help your fellow scientists make the right decisions. Thank you for your contribution.



Anti-OSGEP Mouse Monoclonal Antibody [Clone ID: OTI8B3]

For Research Use Only. Not for use in diagnostic procedures.