

Anti-C3orf15 (MAATS1) Mouse Monoclonal Antibody [Clone ID: OTI6G1]

Catalog Number: M13032

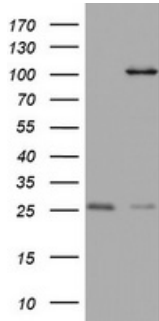
Overview

Product Name	Anti-C3orf15 (MAATS1) Mouse Monoclonal Antibody [Clone ID: OTI6G1]
Reactive Species	Human
Description	Boster Bio C3orf15 mouse monoclonal antibody, clone OTI6G1 (formerly 6G1). Catalog# M13032. Tested in IHC, WB. This antibody reacts with Human.
Application	IHC, WB
Clonality	Monoclonal OTI6G1
Formulation	PBS (pH 7.3) containing 1% stabilizing protein, 50% glycerol and 0.02% sodium azide. This antibody is supplied in a stabilized formulation. Compatibility with conjugation reactions depends on the chemistry of the conjugation method used. For conjugation methods that are not compatible with the stabilizing components present in this formulation, a carrier-free antibody format is required.
Storage Instructions	Store at -20°C as received.
Host	Mouse
Uniprot ID	Q7Z4T9

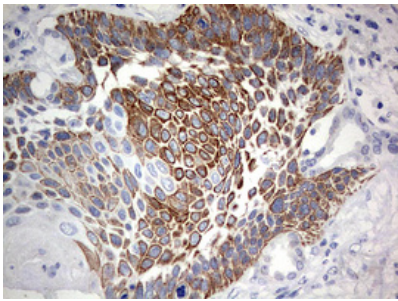
Technical Details

Immunogen	Human recombinant protein fragment corresponding to amino acids 1-313 of human C3orf15 (NP_203528) produced in E.coli.
Isotype	IgG1
Concentration	1 mg/ml
Purification	Purified from mouse ascites fluids or tissue culture supernatant by affinity chromatography (protein A/G)
Suggested Dilutions	WB 1:500 IHC 1:150

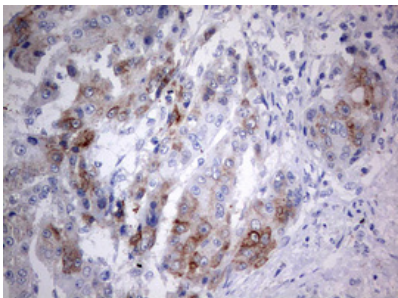
Anti-C3orf15 (MAATS1) Mouse Monoclonal Antibody [Clone ID: OTI6G1] (M13032) Images



HEK293T cells were transfected with the pCMV6-ENTRY control (Left lane) or pCMV6-ENTRY C3orf15 (Right lane) cDNA for 48 hrs and lysed. Equivalent amounts of cell lysates (5 ug per lane) were separated by SDS-PAGE and immunoblotted with anti-C3orf15.



Immunohistochemical staining of paraffin-embedded Carcinoma of Human lung tissue using anti-C3orf15 mouse monoclonal antibody. (Heat-induced epitope retrieval by 10mM citric buffer)



Immunohistochemical staining of paraffin-embedded Carcinoma of Human liver tissue using anti-C3orf15 mouse monoclonal antibody. (Heat-induced epitope retrieval by 10mM citric buffer)

Submit a product review to [Biocompare.com](https://www.biocompare.com)

Submit a review of this product to [Biocompare.com](https://www.biocompare.com) to receive a \$20 Amazon.com giftcard! Your reviews help your fellow scientists make the right decisions. Thank you for your contribution.



Anti-C3orf15 (MAATS1) Mouse Monoclonal Antibody [Clone ID: OTI6G1]

For Research Use Only. Not for use in diagnostic procedures.