

Anti-C9orf89 (CARD19) Mouse Monoclonal Antibody [Clone ID: OTI4E10]

Catalog Number: M13064

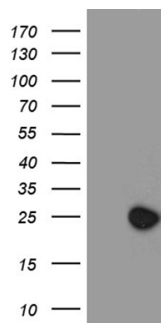
Overview

Product Name	Anti-C9orf89 (CARD19) Mouse Monoclonal Antibody [Clone ID: OTI4E10]
Reactive Species	Human
Description	Boster Bio C9orf89 mouse monoclonal antibody, clone OTI4E10. Catalog# M13064. Tested in IHC, WB. This antibody reacts with Human.
Application	IHC, WB
Clonality	Monoclonal OTI4E10
Formulation	PBS (pH 7.3) containing 1% stabilizing protein, 50% glycerol and 0.02% sodium azide. This antibody is supplied in a stabilized formulation. Compatibility with conjugation reactions depends on the chemistry of the conjugation method used. For conjugation methods that are not compatible with the stabilizing components present in this formulation, a carrier-free antibody format is required.
Storage Instructions	Store at -20°C as received.
Host	Mouse
Uniprot ID	Q96LW7

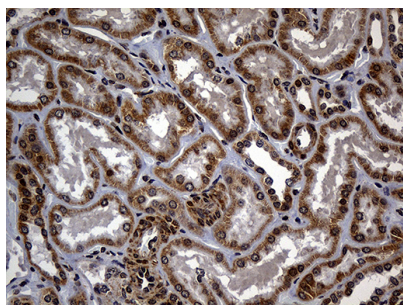
Technical Details

Immunogen	Full length human recombinant protein of human C9ORF89 (NP_115686) produced in E.coli.
Isotype	IgG2b
Concentration	1 mg/ml
Purification	Purified from mouse ascites fluids or tissue culture supernatant by affinity chromatography (protein A/G)
Suggested Dilutions	WB: 1:2000 IHC: 1:500

Anti-C9orf89 (CARD19) Mouse Monoclonal Antibody [Clone ID: OTI4E10] (M13064) Images



HEK293T cells were transfected with the pCMV6-ENTRY control (Left lane) or pCMV6-ENTRY C9orf89 (Right lane) cDNA for 48 hrs and lysed. Equivalent amounts of cell lysates (5 ug per lane) were separated by SDS-PAGE and immunoblotted with anti-C9orf89 (1:2000).



Immunohistochemical staining of paraffin-embedded Human Kidney tissue within the normal limits using anti-C9orf89 mouse monoclonal antibody. (Heat-induced epitope retrieval by 1mM EDTA in 10mM Tris buffer (pH8.5) at 120°C for 3min)

Submit a product review to Biocompare.com

Submit a review of this product to Biocompare.com to receive a \$20 Amazon.com giftcard! Your reviews help your fellow scientists make the right decisions. Thank you for your contribution.



Anti-C9orf89 (CARD19) Mouse Monoclonal Antibody [Clone ID: OTI4E10]

For Research Use Only. Not for use in diagnostic procedures.