

Anti-FAM160A2 Rabbit Monoclonal Antibody

Catalog Number: M13150-1

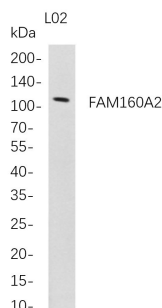
Overview

Product Name	Anti-FAM160A2 Rabbit Monoclonal Antibody
Reactive Species	Human
Description	This Recombinant Rabbit Monoclonal Antibody detects endogenous levels of FAM160A2 protein. Validated for research with WB applications. Anti FAM160A2 is reactive for Human samples
Application	WB
Clonality	Monoclonal
Formulation	PBS, 50% glycerol, 0.05% Proclin 300, 0.05% stabilizing protein This antibody is supplied in a stabilized formulation. Compatibility with conjugation reactions depends on the chemistry of the conjugation method used. For conjugation methods that are not compatible with the stabilizing components present in this formulation, a carrier-free antibody format is required.
Storage Instructions	Store at -20°C/1 year
Host	Rabbit
Uniprot ID	Q8N612

Technical Details

Isotype	IgG, Kappa
Purification	Protein A
Suggested Dilutions	WB 1:1000-1:5000

Anti-FAM160A2 Rabbit Monoclonal Antibody (M13150-1) Images



Western Blot analysis of L02 whole cell lysates were separated by 4-20% SDS-PAGE, and the membrane was blotted with anti-FAM160A2 rabbit mAb. The HRP-conjugated Goat anti-Rabbit IgG(H + L) antibody was used to detect the antibody.

Submit a product review to Biocompare.com

Submit a review of this product to Biocompare.com to receive a \$20 Amazon.com giftcard! Your reviews help your fellow scientists make the right decisions. Thank you for your contribution.



Anti-FAM160A2 Rabbit Monoclonal Antibody

For Research Use Only. Not for use in diagnostic procedures.