

Anti-DPEP2 Antibody (N-Term)

Catalog Number: M13327

About DPEP2

Probable metalloprotease which hydrolyzes leukotriene D4 (LTD4) into leukotriene E4 (LTE4).

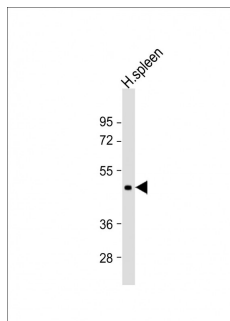
Overview

Product Name	Anti-DPEP2 Antibody (N-Term)
Reactive Species	Human
Description	Boster Bio Anti-DPEP2 Antibody (N-Term) (Catalog # M13327). Tested in WB application(s). This antibody reacts with Human.
Application	WB
Clonality	Polyclonal
Formulation	Purified polyclonal antibody supplied in PBS with 0.09% (W/V) sodium azide.
Storage Instructions	Maintain refrigerated at 2-8°C for up to 2 weeks. For long-term storage, store at -20°C in small aliquots to prevent freeze-thaw cycles.
Host	Rabbit
Uniprot ID	Q9H4A9

Technical Details

Immunogen	This DPEP2 antibody is generated from a rabbit immunized with a KLH conjugated synthetic peptide between 138-171 amino acids from human DPEP2.
Predicted Reactive Species	Bovine
Isotype	Rabbit IgG
Purification	This antibody is purified through a protein A column, followed by peptide affinity purification.
Suggested Dilutions	WB: 1:2000

Anti-DPEP2 Antibody (N-Term) (M13327) Images



Anti-DPEP2 Antibody (N-Term) at 1:2000 dilution + human spleen lysates. Lysates/proteins at 20 μ g per lane. Secondary Goat Anti-Rabbit IgG, (H+L), Peroxidase conjugated at 1/10000 dilution. Predicted band size : 53 kDa. Blocking/Dilution buffer: 5% NFD/MTBST.

Submit a product review to Biocompare.com

Submit a review of this product to Biocompare.com to receive a \$20 Amazon.com giftcard! Your reviews help your fellow scientists make the right decisions. Thank you for your contribution.



Anti-DPEP2 Antibody (N-Term)

For Research Use Only. Not for use in diagnostic procedures.