

Anti-LIME1 Purified Monoclonal Antibody

Catalog Number: M13360

About LIME1

LIME (Lck-interacting molecule) is a 30 kDa double-palmitoylated protein with unusually basic cytoplasmic domain, expressed by T cells. After ligation of CD4 or CD8 T cell coreceptors, LIME is phosphorylated by Src-family kinases and associates with Lck and Fyn kinases and with their negative regulator Csk. Interestingly, Csk-mediated phosphorylation of C-terminal negative-regulatory tyrosine of LIME-associated Lck can result in increase of enzymatic activity compared with the total pool of Lck, thus, LIME serves as a positive regulator of TCR-dependent T cell signaling. However, under some circumstances, LIME may mediate inhibitory signals.

Overview

Product Name	Anti-LIME1 Purified Monoclonal Antibody
Reactive Species	Human
Description	Boster Bio Anti-LIME1 Purified Monoclonal Antibody (Catalog# M13360). Tested in WB, IHC-P, FCM application(s). This antibody reacts with Human.
Application	Flow Cytometry, IHC-P, WB
Clonality	Monoclonal LIME-10
Formulation	Phosphate buffered saline (PBS), pH 7.4, 15 mM sodium azide
Storage Instructions	Store at 2-8°C. Do not freeze.
Host	Mouse
Uniprot ID	Q9H400

Technical Details

Immunogen	COOH-terminal peptide comprising residues 281-296 of the human LIME conjugated to keyhole limpet hemocyanin. The antibody LIME-10 reacts with the cytoplasmic domain of LIME, a 30 kDa Lck-interacting transmembrane adaptor expressed by T cells.
Predicted Reactive Species	Primate
Cross Reactivity	As in case with other anti-CD170 antibodies, this antibody cross-reacts with Siglec-14, whose first two Ig domains are almost identical to those of CD170.
Isotype	Mouse IgG2a
Form	Liquid
Concentration	1 mg/ml
Purification	Purified by protein-A affinity chromatography.

Suggested Dilutions

Dilute the sample so that the expected range of concentrations fall within the detection range of this kit.

If the expected range of concentration is unknown, a pilot test should be conducted to decide the optimal dilution ratio for your samples.

Some PubMed article(s) citing the expression level of this target are as follows:

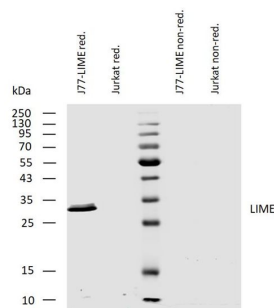
Boster Bio's internal QC testing used:

Immunohistochemistry (paraffin sections): Recommended dilution: 10 ug/ml.

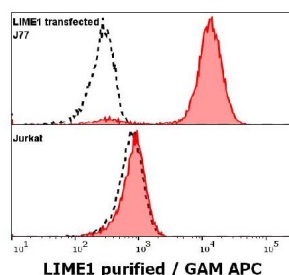
Western blotting: Reducing conditions; recommended dilution: 1 ug/ml.

Flow cytometry: Recommended dilution: 1-5 ug/ml.

Anti-LIME1 Purified Monoclonal Antibody (M13360) Images



Western blotting analysis of human LIME using mouse monoclonal antibody LIME-10 on lysates of J77-LIME transfectants and Jurkat cells under reducing and non-reducing conditions. Nitrocellulose membrane was probed with 1 µg/ml of mouse monoclonal antibody followed by IRDye800-conjugated anti-mouse secondary antibody. LIME was detected around 30 kDa.



Anti-Hu LIME1 purified antibody (clone LIME-10) specificity verification by flow cytometry

Analysis of the antibody staining was performed on fixed and permeabilized cell suspension. Anti-Hu LIME1 purified antibody (clone LIME-10) (concentration in sample 1 µg/ml, red-filled histogram) binds specifically to intracellular LIME1 in transfected cells (upper panel), but not to Jurkat cells (lower panel). Level of non-specific binding was assessed using Mouse IgG1 isotype control purified antibody under same conditions (concentration in sample 1 µg/ml, black-dashed histogram).

Submit a product review to Biocompare.com

Submit a review of this product to Biocompare.com to receive a \$20 Amazon.com giftcard! Your reviews help your fellow scientists make the right decisions. Thank you for your contribution.



Anti-LIME1 Purified Monoclonal Antibody