

Anti-Ms Lime1 Purified Monoclonal Antibody

Catalog Number: M13360-1

About Lime1

LIME (Lck-interacting molecule) is a 30 kDa double-palmitoylated protein with unusually basic cytoplasmic domain, expressed by T cells. After ligation of CD4 or CD8 T cell coreceptors, LIME is phosphorylated by Src-family kinases and associates with Lck and Fyn kinases and with their negative regulator Csk. Interestingly, Csk-mediated phosphorylation of C-terminal negative-regulatory tyrosine of LIME-associated Lck can result in increase of enzymatic activity compared with the total pool of Lck, thus, LIME serves as a positive regulator of TCR-dependent T cell signaling. However, under some circumstances, LIME may mediate inhibitory signals.

Overview

Product Name	Anti-Ms Lime1 Purified Monoclonal Antibody
Reactive Species	Mouse
Description	Boster Bio Anti-Ms Lime1 Purified Monoclonal Antibody (Catalog# M13360-1). Tested in IP, WB application(s). This antibody reacts with Mouse.
Application	IP, WB
Clonality	Monoclonal mLIME-05
Formulation	Phosphate buffered saline (PBS), pH 7.4, 15 mM sodium azide
Storage Instructions	Store at 2-8°C. Do not freeze.
Host	Mouse
Uniprot ID	Q9EQR5

Technical Details

Immunogen	Recombinant protein corresponding to amino acids 86-202 of mouse LIME. Mouse monoclonal antibody mLIME-05 reacts with the cytoplasmic domain of LIME, a 30 kDa Lck-interacting transmembrane adaptor expressed mainly by T cells.
Predicted Reactive Species	Primate
Cross Reactivity	As in case with other anti-CD170 antibodies, this antibody cross-reacts with Siglec-14, whose first two Ig domains are almost identical to those of CD170.
Isotype	Mouse IgG2a
Form	Liquid
Concentration	1 mg/ml
Purification	Purified by protein-A affinity chromatography.

Suggested Dilutions

Dilute the sample so that the expected range of concentrations fall within the detection range of this kit.

If the expected range of concentration is unknown, a pilot test should be conducted to decide the optimal dilution ratio for your samples.

Some PubMed article(s) citing the expression level of this target are as follows:

Boster Bio's internal QC testing used:

Immunoprecipitation: Positive control: murine splenic T cells.

Western blotting: Reducing conditions, recommended dilution: 1-5 ug/ml.

Anti-Ms Lime1 Purified Monoclonal Antibody (M13360-1) Images

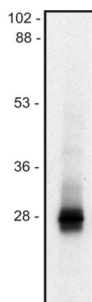


Figure 1. Western blotting validation for Anti-Ms Lime1 Purified Monoclonal Antibody M13360-1

Western blotting analysis of murine thymocyte lysate (1% SDS); non-reduced sample

Submit a product review to Biocompare.com

Submit a review of this product to Biocompare.com to receive a \$20 Amazon.com giftcard! Your reviews help your fellow scientists make the right decisions. Thank you for your contribution.



Anti-Ms Lime1 Purified Monoclonal Antibody