

Anti-Bmi-1 COMMD3 Monoclonal Antibody

Catalog Number: M13425

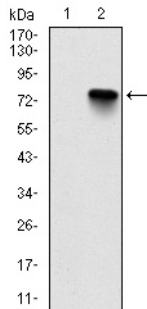
Overview

Product Name	Anti-Bmi-1 COMMD3 Monoclonal Antibody
Reactive Species	Human
Description	Boster Bio Anti-Bmi-1 COMMD3 Monoclonal Antibody catalog # M13425. Tested in ELISA, Flow Cytometry, IF, IHC, WB applications. This antibody reacts with Human.
Application	ELISA, Flow Cytometry, IF, IHC, WB
Clonality	Monoclonal 3E3
Formulation	Ascitic fluid containing 0.03% sodium azide.
Storage Instructions	Store at -20°C for one year. For short term storage and frequent use, store at 4°C for up to one month. Avoid repeated freeze-thaw cycles.
Host	Mouse
Uniprot ID	Q9UBI1

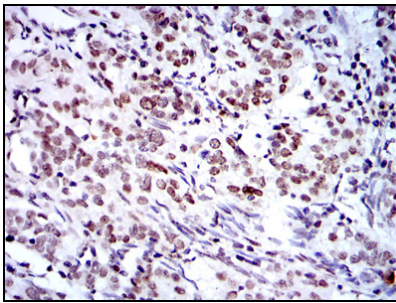
Technical Details

Immunogen	Purified recombinant fragment of human Bmi-1 expressed in E. Coli.
Isotype	IgG
Form	Liquid
Concentration	1 mg/ml
Purification	Affinity purification
Suggested Dilutions	WB 1:500-1:2000 IHC 1:200-1:1000 IF 1:200-1:1000 FC 1:200-1:400 ELISA 1:10000

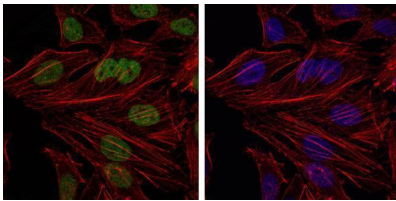
Anti-Bmi-1 COMMD3 Monoclonal Antibody (M13425) Images



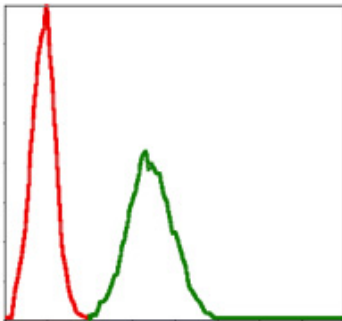
Western Blot analysis using Bmi-1 Monoclonal Antibody against HEK293 (1) and BMI1-hlgGfc transfected HEK293 (2) cell lysate.



Immunohistochemistry analysis of paraffin-embedded cervical cancer tissues with DAB staining using Bmi-1 Monoclonal Antibody.



Immunofluorescence analysis of HeLa cells using Bmi-1 Monoclonal Antibody (green). Blue: DRAQ5 fluorescent DNA dye. Red: Actin filaments have been labeled with Alexa Fluor-555 phalloidin.



Flow cytometric analysis of NIH/3T3 cells using Bmi-1 Monoclonal Antibody (green) and negative control (red).

Submit a product review to [Biocompare.com](https://www.biocompare.com)

Submit a review of this product to [Biocompare.com](https://www.biocompare.com) to receive a \$20 Amazon.com giftcard! Your reviews help your fellow scientists make the right decisions. Thank you for your contribution.



Anti-Bmi-1 COMMD3 Monoclonal Antibody

For Research Use Only. Not for use in diagnostic procedures.