

Anti-FAM168B Antibody (Center)

Catalog Number: M13504

About FAM168B

Modulates neuronal axonal outgrowth by acting as a negative regulator of CDC42 and STAT3 and a positive regulator of STMN2. Positive regulator of CDC27 (By similarity).

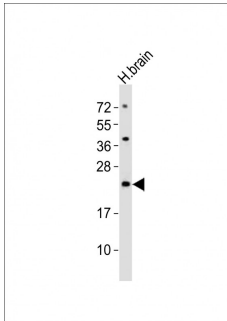
Overview

Product Name	Anti-FAM168B Antibody (Center)
Reactive Species	Human
Description	Boster Bio Anti-FAM168B Antibody (Center) (Catalog # M13504). Tested in IHC, Flow Cytometry, WB application(s). This antibody reacts with Human.
Application	Flow Cytometry, IHC, WB
Clonality	Polyclonal
Formulation	Purified polyclonal antibody supplied in PBS with 0.09% (W/V) sodium azide.
Storage Instructions	Maintain refrigerated at 2-8°C for up to 2 weeks. For long-term storage, store at -20°C in small aliquots to prevent freeze-thaw cycles.
Host	Rabbit
Uniprot ID	A1KXE4

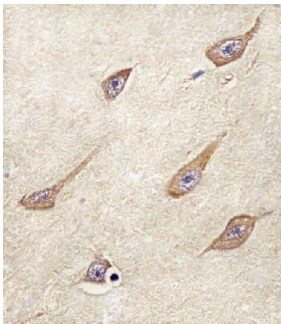
Technical Details

Immunogen	This FAM168B antibody is generated from a rabbit immunized with a KLH conjugated synthetic peptide between 105-139 amino acids from the Central region of human FAM168B.
Predicted Reactive Species	Bovine
Isotype	Rabbit IgG
Purification	This antibody is purified through a protein A column, followed by peptide affinity purification.
Suggested Dilutions	WB: 1:2000 IHC: 1:25 FC: 1:25

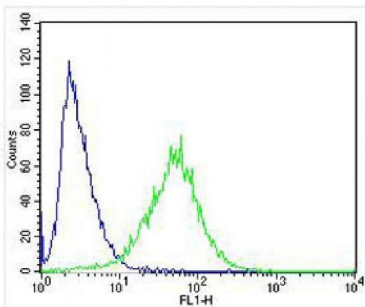
Anti-FAM168B Antibody (Center) (M13504) Images



Anti-FAM168B Antibody (Center) at 1:2000 dilution + human brain lysates. Lysates/proteins at 20 μ g per lane. Secondary Goat Anti-Rabbit IgG, (H+L), Peroxidase conjugated at 1/10000 dilution. Predicted band size : 20 kDa. Blocking/Dilution buffer: 5% NFDN/TBST.



M13504 staining FAM168B in Human brain tissue sections by Immunohistochemistry (IHC-P -paraformaldehyde-fixed, paraffin-embedded sections). Tissue was fixed with formaldehyde and blocked with 3% BSA for 0.5 hour at room temperature; antigen retrieval was by heat mediation with a citrate buffer (pH6). Samples were incubated with primary antibody (1/25) for 1 hours at 37°C. A undiluted biotinylated goat polyvalent antibody was used as the secondary antibody.



Overlay histogram showing SH-SY5Y cells stained with M13504 (green line). The cells were fixed with 4% paraformaldehyde (10 min) and then permeabilized with 90% methanol for 10 min. The cells were then incubated in 2% bovine serum albumin to block non-specific protein-protein interactions followed by the antibody (, 1:25 dilution) for 60 min at 37°C. The secondary antibody used was Alexa Fluor® 488 goat anti-rabbit IgG (H+L) at 1/400 dilution for 40 min at 37°C. Isotype control antibody (blue line) was rabbit IgG1 (1g/1x10⁶ cells) used under the same conditions. Acquisition of >10,000 events was performed.

Submit a product review to Biocompare.com

Submit a review of this product to Biocompare.com to receive a \$20 Amazon.com giftcard! Your reviews help your fellow scientists make the right decisions. Thank you for your contribution.



Anti-FAM168B Antibody (Center)

For Research Use Only. Not for use in diagnostic procedures.