

Anti-PFD6 (PFDN6) Mouse Monoclonal Antibody [Clone ID: OTI4E10]

Catalog Number: M13634

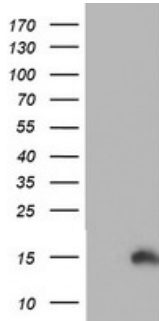
Overview

Product Name	Anti-PFD6 (PFDN6) Mouse Monoclonal Antibody [Clone ID: OTI4E10]
Reactive Species	Human, Mouse, Rat
Description	Boster Bio PFDN6 (PFD6) mouse monoclonal antibody, clone OTI4E10 (formerly 4E10). Catalog# M13634. Tested in FC, IHC, WB. This antibody reacts with Human, Mouse, Rat.
Application	Flow Cytometry, IHC, WB
Clonality	Monoclonal OTI4E10
Formulation	PBS (pH 7.3) containing 1% stabilizing protein, 50% glycerol and 0.02% sodium azide. This antibody is supplied in a stabilized formulation. Compatibility with conjugation reactions depends on the chemistry of the conjugation method used. For conjugation methods that are not compatible with the stabilizing components present in this formulation, a carrier-free antibody format is required.
Storage Instructions	Store at -20°C as received.
Host	Mouse
Uniprot ID	O15212

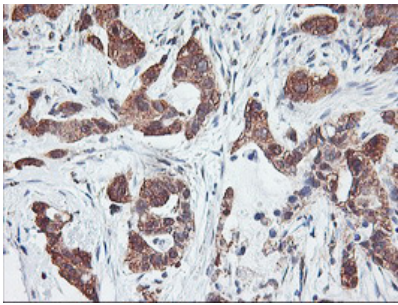
Technical Details

Immunogen	Human recombinant protein fragment corresponding to amino acids 2-129 of human PFDN6 (NP_055075) produced in E.coli.
Isotype	IgG1
Concentration	0.67 mg/ml
Purification	Purified from mouse ascites fluids or tissue culture supernatant by affinity chromatography (protein A/G)
Suggested Dilutions	WB 1:2000 IHC 1:150 Flow Cytometry 1:100

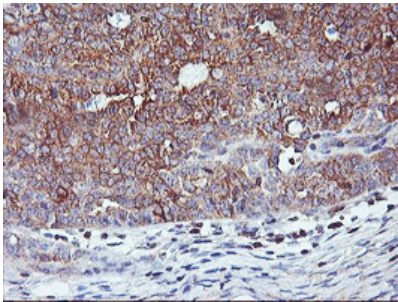
Anti-PFD6 (PFDN6) Mouse Monoclonal Antibody [Clone ID: OTI4E10] (M13634) Images



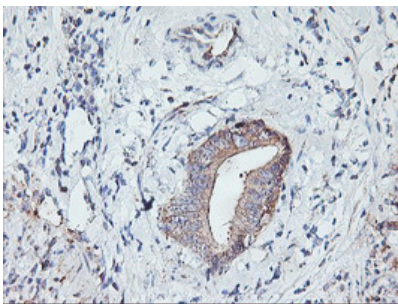
HEK293T cells were transfected with the pCMV6-ENTRY control (Left lane) or pCMV6-ENTRY PFDN6 (Right lane) cDNA for 48 hrs and lysed. Equivalent amounts of cell lysates (5 ug per lane) were separated by SDS-PAGE and immunoblotted with anti-PFDN6.



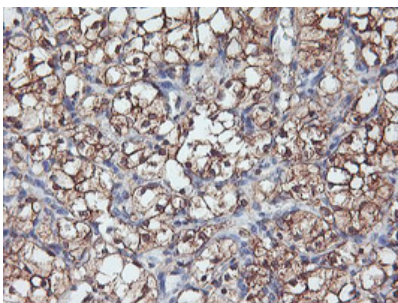
Immunohistochemical staining of paraffin-embedded Carcinoma of Human lung tissue using anti-PFDN6 mouse monoclonal antibody. (Heat-induced epitope retrieval by 10mM citric buffer)



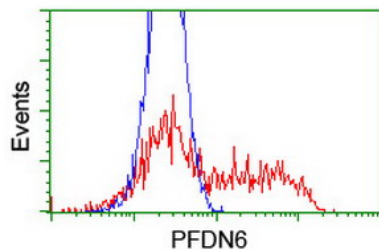
Immunohistochemical staining of paraffin-embedded Adenocarcinoma of Human ovary tissue using anti-PFDN6 mouse monoclonal antibody. (Heat-induced epitope retrieval by 10mM citric buffer)



Immunohistochemical staining of paraffin-embedded Carcinoma of Human pancreas tissue using anti-PFDN6 mouse monoclonal antibody. (Heat-induced epitope retrieval by 10mM citric buffer)



Immunohistochemical staining of paraffin-embedded Carcinoma of Human kidney tissue using anti-PFDN6 mouse monoclonal antibody. (Heat-induced epitope retrieval by 10mM citric buffer)



HEK293T cells transfected with either PFDN6 (Myc-DDK-tagged) overexpress plasmid (Red) or empty vector control plasmid (Blue) were immunostained by anti-PFDN6 antibody (M13634)

Submit a product review to Biocompare.com

Submit a review of this product to Biocompare.com to receive a \$20 Amazon.com giftcard! Your reviews help your fellow scientists make the right decisions. Thank you for your contribution.



Anti-PFD6 (PFDN6) Mouse Monoclonal Antibody [Clone ID: OTI4E10]

For Research Use Only. Not for use in diagnostic procedures.