

Anti-CCRK Antibody (N-term)

Catalog Number: M13734

About CDK20

Required for high-level Shh responses in the developing neural tube. Together with BROM1, controls the structure of the primary cilium by coordinating assembly of the ciliary membrane and axoneme, allowing GLI2 to be properly activated in response to SHH signaling (By similarity). Involved in cell growth. Activates CDK2, a kinase involved in the control of the cell cycle, by phosphorylating residue 'Thr-160'.

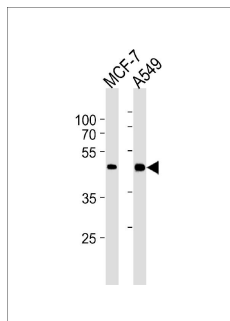
Overview

Product Name	Anti-CCRK Antibody (N-term)
Reactive Species	Human
Description	Boster Bio Anti-CCRK Antibody (N-term) (Catalog # M13734). Tested in WB application(s). This antibody reacts with Human.
Application	WB
Clonality	Monoclonal 885CT27.1.1
Formulation	Purified monoclonal antibody supplied in PBS with 0.09% (W/V) sodium azide.
Storage Instructions	Maintain refrigerated at 2-8°C for up to 2 weeks. For long-term storage, store at -20°C in small aliquots to prevent freeze-thaw cycles.
Host	Mouse
Uniprot ID	Q8IZL9

Technical Details

Immunogen	Purified His-tagged CCRK protein was used to produced this monoclonal antibody.
Predicted Reactive Species	Bovine
Isotype	IgG1
Purification	This antibody is purified through a protein G column, followed by dialysis against PBS.
Suggested Dilutions	Dilute the sample so that the expected range of concentrations fall within the detection range of this kit. If the expected range of concentration is unknown, a pilot test should be conducted to decide the optimal dilution ratio for your samples. Some PubMed article(s) citing the expression level of this target are as follows: Boster Bio's internal QC testing used: WB: 1:1000

Anti-CCRK Antibody (N-term) (M13734) Images



CCRK Antibody (N-term) western blot analysis in MCF-7, A549 cell line lysates (35ug/lane). This demonstrates the CCRK antibody detected the CCRK protein (arrow).

Submit a product review to Biocompare.com

Submit a review of this product to Biocompare.com to receive a \$20 Amazon.com giftcard! Your reviews help your fellow scientists make the right decisions. Thank you for your contribution.



Anti-CCRK Antibody (N-term)