

Anti-MAGEB1 Mouse Monoclonal Antibody [Clone ID: OTI4E12]

Catalog Number: M13984

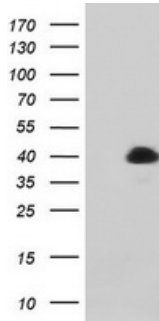
Overview

Product Name	Anti-MAGEB1 Mouse Monoclonal Antibody [Clone ID: OTI4E12]
Reactive Species	Dog, Human, Mouse
Description	Boster Bio MAGEB1 mouse monoclonal antibody, clone OTI4E12 (formerly 4E12). Catalog# M13984. Tested in IHC, WB. This antibody reacts with Human, Mouse, Dog.
Application	IHC, WB
Clonality	Monoclonal OTI4E12
Formulation	PBS (PH 7.3) containing 1% BSA, 50% glycerol and 0.02% sodium azide.
Storage Instructions	Store at -20°C as received.
Host	Mouse
Uniprot ID	P43366

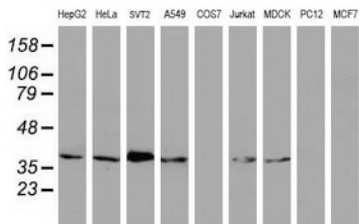
Technical Details

Immunogen	Full length human recombinant protein of human MAGEB1 (NP_796379) produced in E.coli.
Isotype	IgG1
Concentration	1 mg/ml
Purification	Purified from mouse ascites fluids or tissue culture supernatant by affinity chromatography (protein A/G)

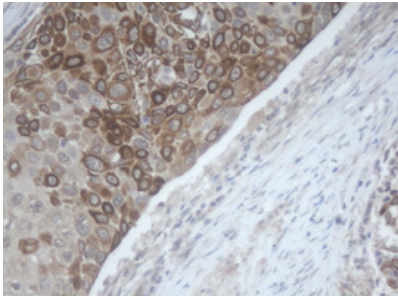
Anti-MAGEB1 Mouse Monoclonal Antibody [Clone ID: OTI4E12] (M13984) Images



HEK293T cells were transfected with the pCMV6-ENTRY control (Left lane) or pCMV6-ENTRY MAGEB1 (Right lane) cDNA for 48 hrs and lysed. Equivalent amounts of cell lysates (5 ug per lane) were separated by SDS-PAGE and immunoblotted with anti-MAGEB1.



Western blot analysis of extracts (35ug) from 9 different cell lines by using anti-MAGEB1 monoclonal antibody (HepG2: human; HeLa: human; SVT2: mouse; A549: human; COS7: monkey; Jurkat: human; MDCK: canine; PC12: rat; MCF7: human).



Immunohistochemical staining of paraffin-embedded Carcinoma of Human bladder tissue using anti-MAGEB1 mouse monoclonal antibody. (Heat-induced epitope retrieval by 10mM citric buffer)

Submit a product review to Biocompare.com

Submit a review of this product to Biocompare.com to receive a \$20 Amazon.com giftcard! Your reviews help your fellow scientists make the right decisions. Thank you for your contribution.



Anti-MAGEB1 Mouse Monoclonal Antibody [Clone ID: OTI4E12]