

Anti-N4BP2L2 Mouse Monoclonal Antibody [Clone ID: OTI1C8]

Catalog Number: M14016

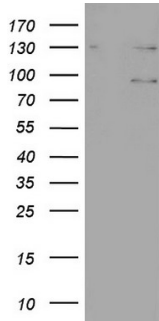
Overview

Product Name	Anti-N4BP2L2 Mouse Monoclonal Antibody [Clone ID: OTI1C8]
Reactive Species	Human
Description	Boster Bio N4BP2L2 mouse monoclonal antibody, clone OTI1C8 (formerly 1C8). Catalog# M14016. Tested in IHC, WB. This antibody reacts with Human.
Application	IHC, WB
Clonality	Monoclonal OTI1C8
Formulation	PBS (pH 7.3) containing 1% stabilizing protein, 50% glycerol and 0.02% sodium azide. This antibody is supplied in a stabilized formulation. Compatibility with conjugation reactions depends on the chemistry of the conjugation method used. For conjugation methods that are not compatible with the stabilizing components present in this formulation, a carrier-free antibody format is required.
Storage Instructions	Store at -20°C as received.
Host	Mouse
Uniprot ID	Q92802

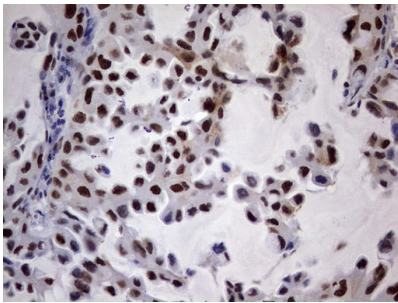
Technical Details

Immunogen	Full length human recombinant protein of human N4BP2L2 (NP_055702) produced in E.coli.
Isotype	IgG2a
Concentration	1 mg/ml
Purification	Purified from mouse ascites fluids or tissue culture supernatant by affinity chromatography (protein A/G)
Suggested Dilutions	WB 1:200 IHC 1:150

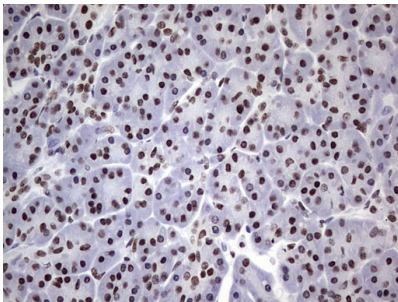
Anti-N4BP2L2 Mouse Monoclonal Antibody [Clone ID: OTI1C8] (M14016) Images



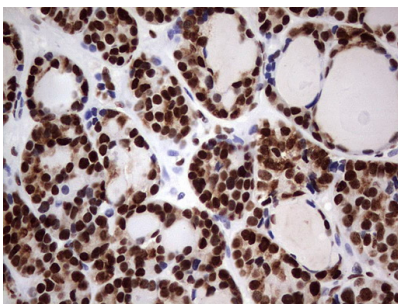
HEK293T cells were transfected with the pCMV6-ENTRY control (Left lane) or pCMV6-ENTRY N4BP2L2 (Right lane) cDNA for 48 hrs and lysed. Equivalent amounts of cell lysates (5 ug per lane) were separated by SDS-PAGE and immunoblotted with anti-N4BP2L2.



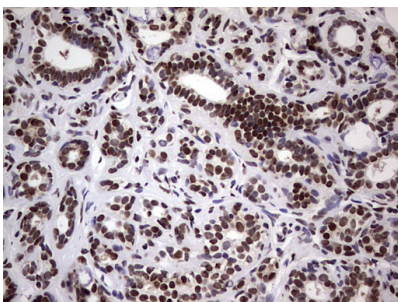
Immunohistochemical staining of paraffin-embedded Carcinoma of Human lung tissue using anti-N4BP2L2 mouse monoclonal antibody. (Heat-induced epitope retrieval by 1 mM EDTA in 10mM Tris)



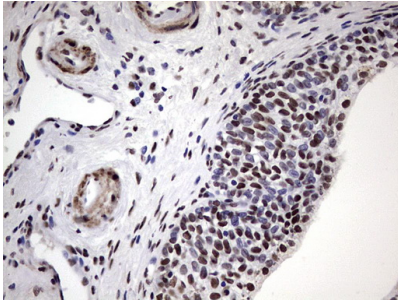
Immunohistochemical staining of paraffin-embedded Human pancreas tissue within the normal limits using anti-N4BP2L2 mouse monoclonal antibody. (Heat-induced epitope retrieval by 1 mM EDTA in 10mM Tris)



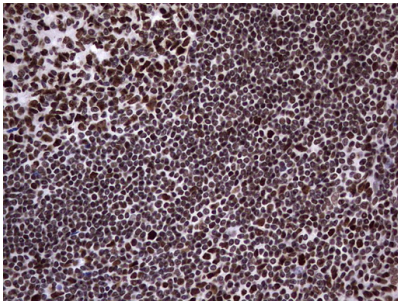
Immunohistochemical staining of paraffin-embedded Carcinoma of Human thyroid tissue using anti-N4BP2L2 mouse monoclonal antibody. (Heat-induced epitope retrieval by 1 mM EDTA in 10mM Tris)



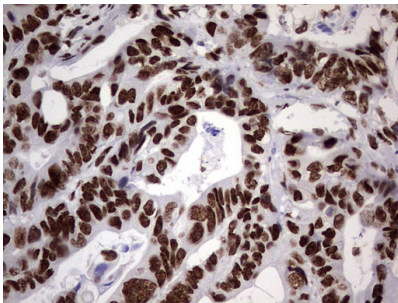
Immunohistochemical staining of paraffin-embedded Human breast tissue within the normal limits using anti-N4BP2L2 mouse monoclonal antibody. (Heat-induced epitope retrieval by 1 mM EDTA in 10mM Tris)



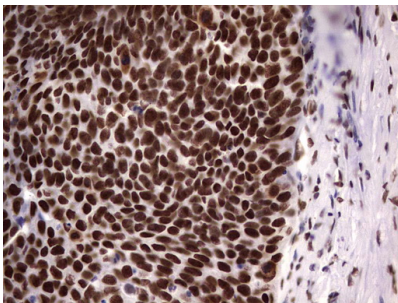
Immunohistochemical staining of paraffin-embedded Carcinoma of Human prostate tissue using anti-N4BP2L2 mouse monoclonal antibody. (Heat-induced epitope retrieval by 1 mM EDTA in 10mM Tris)



Immunohistochemical staining of paraffin-embedded Human tonsil within the normal limits using anti-N4BP2L2 mouse monoclonal antibody. (Heat-induced epitope retrieval by 1 mM EDTA in 10mM Tris)



Immunohistochemical staining of paraffin-embedded Adenocarcinoma of Human colon tissue using anti-N4BP2L2 mouse monoclonal antibody. (Heat-induced epitope retrieval by 1 mM EDTA in 10mM Tris)



Immunohistochemical staining of paraffin-embedded Carcinoma of Human kidney tissue using anti-N4BP2L2 mouse monoclonal antibody. (Heat-induced epitope retrieval by 1 mM EDTA in 10mM Tris)

Submit a product review to Biocompare.com

Submit a review of this product to Biocompare.com to receive a \$20 Amazon.com giftcard! Your reviews help your fellow scientists make the right decisions. Thank you for your contribution.



Anti-N4BP2L2 Mouse Monoclonal Antibody [Clone ID: OTI1C8]

For Research Use Only. Not for use in diagnostic procedures.