

Anti-ACSM5 Mouse Monoclonal Antibody [Clone ID: OTI1G1]

Catalog Number: M14033

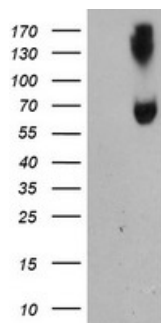
Overview

Product Name	Anti-ACSM5 Mouse Monoclonal Antibody [Clone ID: OTI1G1]
Reactive Species	Human, Mouse
Description	Boster Bio ACSM5 mouse monoclonal antibody, clone OTI1G1 (formerly 1G1). Catalog# M14033. Tested in IF, WB. This antibody reacts with Human, Mouse.
Application	IF, WB
Clonality	Monoclonal OTI1G1
Formulation	PBS (pH 7.3) containing 1% stabilizing protein, 50% glycerol and 0.02% sodium azide. This antibody is supplied in a stabilized formulation. Compatibility with conjugation reactions depends on the chemistry of the conjugation method used. For conjugation methods that are not compatible with the stabilizing components present in this formulation, a carrier-free antibody format is required.
Storage Instructions	Store at -20°C as received.
Host	Mouse
Uniprot ID	Q6NUN0

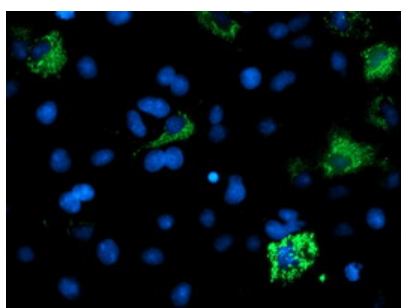
Technical Details

Immunogen	Full length human recombinant protein of human ACSM5 (NP_060358) produced in HEK293T cell.
Isotype	IgG1
Concentration	0.81 mg/ml
Purification	Purified from mouse ascites fluids or tissue culture supernatant by affinity chromatography (protein A/G)
Suggested Dilutions	WB 1:2000 IF 1:100

Anti-ACSM5 Mouse Monoclonal Antibody [Clone ID: OTI1G1] (M14033) Images



HEK293T cells were transfected with the pCMV6-ENTRY control (Left lane) or pCMV6-ENTRY ACSM5 (Right lane) cDNA for 48 hrs and lysed. Equivalent amounts of cell lysates (5 ug per lane) were separated by SDS-PAGE and immunoblotted with anti-ACSM5.



Anti-ACSM5 mouse monoclonal antibody (M14033) immunofluorescent staining of COS7 cells transiently transfected by pCMV6-ENTRY ACSM5.

Submit a product review to Biocompare.com

Submit a review of this product to Biocompare.com to receive a \$20 Amazon.com giftcard! Your reviews help your fellow scientists make the right decisions. Thank you for your contribution.



Anti-ACSM5 Mouse Monoclonal Antibody [Clone ID: OTI1G1]

For Research Use Only. Not for use in diagnostic procedures.