

Anti-RFPL3 Mouse Monoclonal Antibody [Clone ID: OTI2G4]

Catalog Number: M14048

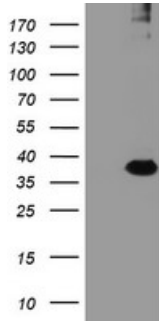
Overview

Product Name	Anti-RFPL3 Mouse Monoclonal Antibody [Clone ID: OTI2G4]
Reactive Species	Human
Description	Boster Bio RFPL3 mouse monoclonal antibody, clone OTI2G4 (formerly 2G4). Catalog# M14048. Tested in FC, IF, IHC, WB. This antibody reacts with Human.
Application	Flow Cytometry, IF, IHC, WB
Clonality	Monoclonal OTI2G4
Formulation	PBS (pH 7.3) containing 1% stabilizing protein, 50% glycerol and 0.02% sodium azide. This antibody is supplied in a stabilized formulation. Compatibility with conjugation reactions depends on the chemistry of the conjugation method used. For conjugation methods that are not compatible with the stabilizing components present in this formulation, a carrier-free antibody format is required.
Storage Instructions	Store at -20°C as received.
Host	Mouse
Uniprot ID	O75679

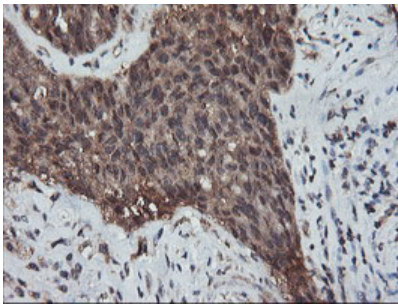
Technical Details

Immunogen	Full length human recombinant protein of human RFPL3 (NP_006595) produced in HEK293T cell.
Isotype	IgG2b
Concentration	0.8 mg/ml
Purification	Purified from mouse ascites fluids or tissue culture supernatant by affinity chromatography (protein A/G)
Suggested Dilutions	WB 1:2000 IHC 1:150 IF 1:100 Flow Cytometry 1:100

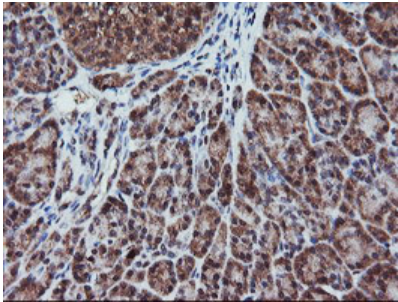
Anti-RFPL3 Mouse Monoclonal Antibody [Clone ID: OTI2G4] (M14048) Images



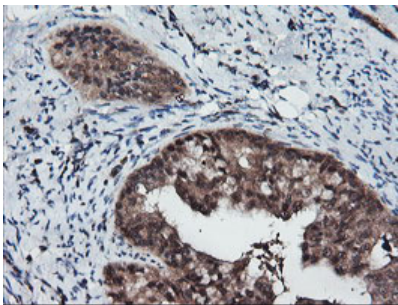
HEK293T cells were transfected with the pCMV6-ENTRY control (Left lane) or pCMV6-ENTRY RFPL3 (Right lane) cDNA for 48 hrs and lysed. Equivalent amounts of cell lysates (5 ug per lane) were separated by SDS-PAGE and immunoblotted with anti-RFPL3.



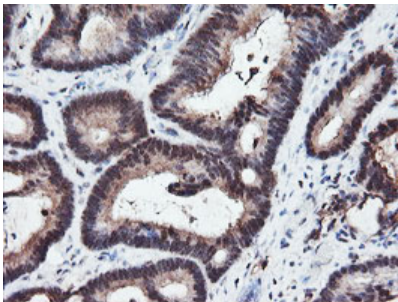
Immunohistochemical staining of paraffin-embedded Adenocarcinoma of Human ovary tissue using anti-RFPL3 mouse monoclonal antibody. (Heat-induced epitope retrieval by 10mM citric buffer)



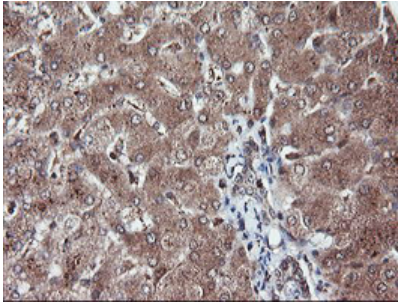
Immunohistochemical staining of paraffin-embedded Human pancreas tissue within the normal limits using anti-RFPL3 mouse monoclonal antibody. (Heat-induced epitope retrieval by 10mM citric buffer)



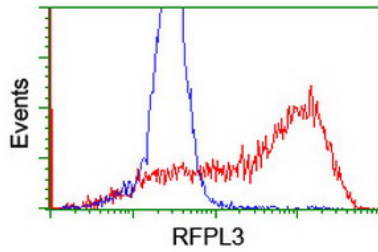
Immunohistochemical staining of paraffin-embedded Adenocarcinoma of Human endometrium tissue using anti-RFPL3 mouse monoclonal antibody. (Heat-induced epitope retrieval by 10mM citric buffer)



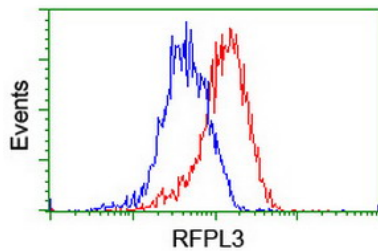
Immunohistochemical staining of paraffin-embedded Adenocarcinoma of Human colon tissue using anti-RFPL3 mouse monoclonal antibody. (Heat-induced epitope retrieval by 10mM citric buffer)



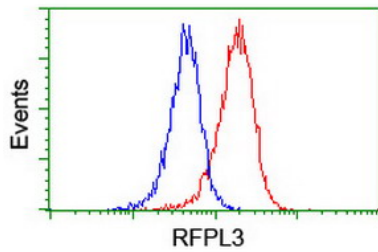
Immunohistochemical staining of paraffin-embedded Human liver tissue within the normal limits using anti-RFPL3 mouse monoclonal antibody. (Heat-induced epitope retrieval by 10mM citric buffer)



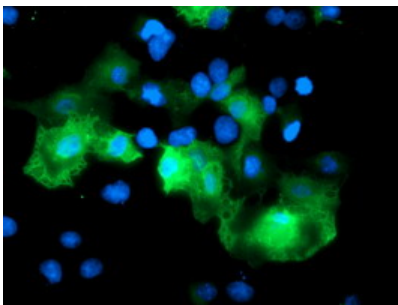
HEK293T cells transfected with either RFPL3 (Myc-DDK-tagged) overexpress plasmid (Red) or empty vector control plasmid (Blue) were immunostained by anti-RFPL3 antibody (M14048)



Flow cytometric Analysis of HeLa cells



Flow cytometric Analysis of Jurkat cells



Anti-RFPL3 mouse monoclonal antibody (M14048) immunofluorescent staining of COS7 cells transiently transfected by pCMV6-ENTRY RFPL3.

Submit a product review to [Biocompare.com](https://www.biocompare.com)

Submit a review of this product to [Biocompare.com](https://www.biocompare.com) to receive a \$20 Amazon.com giftcard! Your reviews help your fellow scientists make the right decisions. Thank you for your contribution.



Anti-RFPL3 Mouse Monoclonal Antibody [Clone ID: OTI2G4]

For Research Use Only. Not for use in diagnostic procedures.