

Anti-MLC1SA (MYL6B) Mouse Monoclonal Antibody [Clone ID: OTI7F10]

Catalog Number: M14059

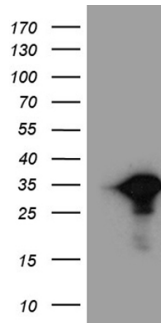
Overview

Product Name	Anti-MLC1SA (MYL6B) Mouse Monoclonal Antibody [Clone ID: OTI7F10]
Reactive Species	Human, Mouse, Rat
Description	Boster Bio MYL6B mouse monoclonal antibody, clone OTI7F10. Catalog# M14059. Tested in WB. This antibody reacts with Human, Mouse, Rat.
Application	WB
Clonality	Monoclonal OTI7F10
Formulation	PBS (pH 7.3) containing 1% stabilizing protein, 50% glycerol and 0.02% sodium azide. This antibody is supplied in a stabilized formulation. Compatibility with conjugation reactions depends on the chemistry of the conjugation method used. For conjugation methods that are not compatible with the stabilizing components present in this formulation, a carrier-free antibody format is required.
Storage Instructions	Store at -20°C as received.
Host	Mouse
Uniprot ID	P14649

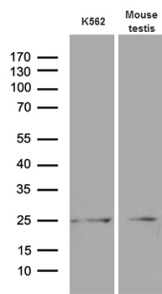
Technical Details

Immunogen	Full length human recombinant protein of human MYL6B (NP_002466) produced in E.coli.
Isotype	IgG2a
Concentration	1 mg/ml
Purification	Purified from mouse ascites fluids or tissue culture supernatant by affinity chromatography (protein A/G)
Suggested Dilutions	WB 1:500~2000

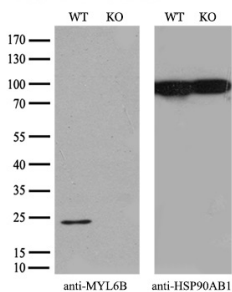
Anti-MLC1SA (MYL6B) Mouse Monoclonal Antibody [Clone ID: OTI7F10] (M14059) Images



HEK293T cells were transfected with the pCMV6-ENTRY control (Left lane) or pCMV6-ENTRY MYL6B (Right lane) cDNA for 48 hrs and lysed. Equivalent amounts of cell lysates (5 ug per lane) were separated by SDS-PAGE and immunoblotted with anti-MYL6B (1:2000).



Western blot analysis of extracts (35ug) from K562 cell line and mouse testis tissue lysate by using anti-MYL6B monoclonal antibody (1:500).



Equivalent amounts of cell lysates (10 ug per lane) of wild-type 293T cells (WT) and MYL6B-Knockout 293T cells (KO) were separated by SDS-PAGE and immunoblotted with anti-MYL6B monoclonal antibody M14059

Submit a product review to [Biocompare.com](https://www.biocompare.com)

Submit a review of this product to [Biocompare.com](https://www.biocompare.com) to receive a \$20 Amazon.com giftcard! Your reviews help your fellow scientists make the right decisions. Thank you for your contribution.



Anti-MLC1SA (MYL6B) Mouse Monoclonal Antibody [Clone ID: OTI7F10]

For Research Use Only. Not for use in diagnostic procedures.