

Anti-RNF39 Mouse Monoclonal Antibody [Clone ID: OTI5E10]

Catalog Number: M14109

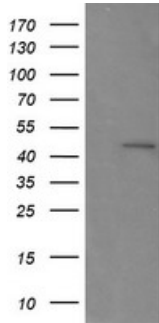
Overview

| | |
|----------------------|--|
| Product Name | Anti-RNF39 Mouse Monoclonal Antibody [Clone ID: OTI5E10] |
| Reactive Species | Dog, Human, Monkey, Mouse, Rat |
| Description | Boster Bio RNF39 mouse monoclonal antibody, clone OTI5E10 (formerly 5E10). Catalog# M14109. Tested in IF, IHC, WB. This antibody reacts with Human, Monkey, Mouse, Rat, Dog. |
| Application | IF, IHC, WB |
| Clonality | Monoclonal OTI5E10 |
| Formulation | PBS (pH 7.3) containing 1% stabilizing protein, 50% glycerol and 0.02% sodium azide. This antibody is supplied in a stabilized formulation. Compatibility with conjugation reactions depends on the chemistry of the conjugation method used. For conjugation methods that are not compatible with the stabilizing components present in this formulation, a carrier-free antibody format is required. |
| Storage Instructions | Store at -20°C as received. |
| Host | Mouse |
| Uniprot ID | Q9H2S5 |

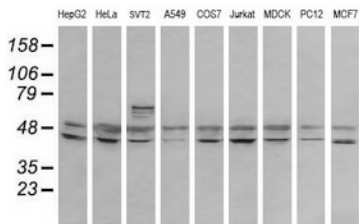
Technical Details

| | |
|---------------------|---|
| Immunogen | Full length human recombinant protein of human RNF39 (NP_079512) produced in HEK293T cell. |
| Isotype | IgG1 |
| Concentration | 1 mg/ml |
| Purification | Purified from mouse ascites fluids or tissue culture supernatant by affinity chromatography (protein A/G) |
| Suggested Dilutions | WB 1:200 IHC 1:150 IF 1:100 |

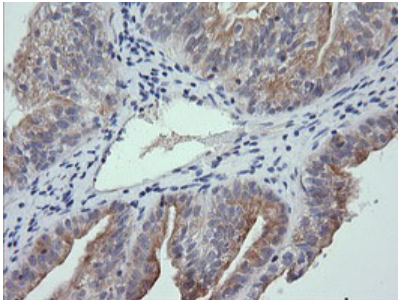
Anti-RNF39 Mouse Monoclonal Antibody [Clone ID: OTI5E10] (M14109) Images



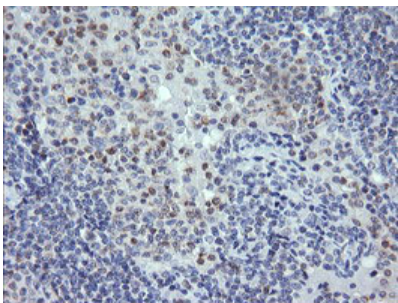
HEK293T cells were transfected with the pCMV6-ENTRY control (Left lane) or pCMV6-ENTRY RNF39 (Right lane) cDNA for 48 hrs and lysed. Equivalent amounts of cell lysates (5 ug per lane) were separated by SDS-PAGE and immunoblotted with anti-RNF39.



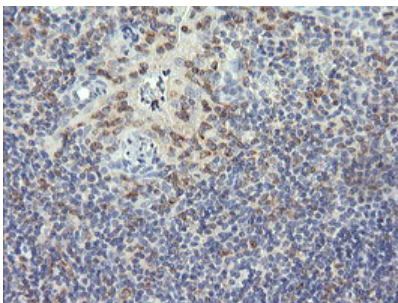
Western blot analysis of extracts (35ug) from 9 different cell lines by using anti-RNF39 monoclonal antibody (HepG2: human; HeLa: human; SVT2: mouse; A549: human; COS7: monkey; Jurkat: human; MDCK: canine; PC12: rat; MCF7: human).



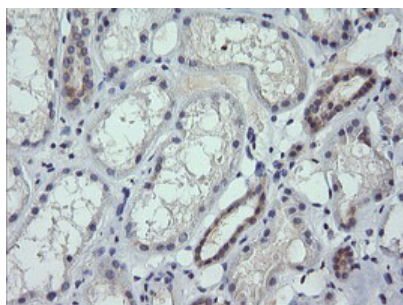
Immunohistochemical staining of paraffin-embedded Adenocarcinoma of Human ovary tissue using anti-RNF39 mouse monoclonal antibody. (Heat-induced epitope retrieval by 10mM citric buffer)



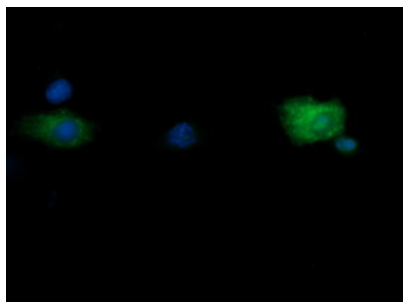
Immunohistochemical staining of paraffin-embedded Human lymphoma tissue using anti-RNF39 mouse monoclonal antibody. (Heat-induced epitope retrieval by 10mM citric buffer)



Immunohistochemical staining of paraffin-embedded Human tonsil within the normal limits using anti-RNF39 mouse monoclonal antibody. (Heat-induced epitope retrieval by 10mM citric buffer)



Immunohistochemical staining of paraffin-embedded Human Kidney tissue within the normal limits using anti-RNF39 mouse monoclonal antibody. (Heat-induced epitope retrieval by 10mM citric buffer)



Anti-RNF39 mouse monoclonal antibody (M14109) immunofluorescent staining of COS7 cells transiently transfected by pCMV6-ENTRY RNF39.

Submit a product review to [Biocompare.com](https://www.biocompare.com)

Submit a review of this product to [Biocompare.com](https://www.biocompare.com) to receive a \$20 Amazon.com giftcard! Your reviews help your fellow scientists make the right decisions. Thank you for your contribution.



Anti-RNF39 Mouse Monoclonal Antibody [Clone ID: OT15E10]

For Research Use Only. Not for use in diagnostic procedures.