

Anti-OPAL1 Purified WBP1L Monoclonal Antibody

Catalog Number: M14439

About WBP1L

OPAL1 (outcome predictor in acute leukemia 1) is an almost uncharacterized transmembrane adaptor protein expressed mainly by megacaryocytes and platelets. Its expression is enhanced on TEL/AML leukemic cells. The function of OPAL1 is unknown, although the presence of a cytochrome c-like heme-binding site and a transmembrane domain suggested OPAL1 may be involved in the mitochondrial electron transport chain. Its originally reported prognostic impact appears to be treatment dependent.

Overview

Product Name	Anti-OPAL1 Purified WBP1L Monoclonal Antibody
Reactive Species	Human
Description	Boster Bio Anti-OPAL1 Purified WBP1L Monoclonal Antibody (Catalog# M14439). Tested in Flow Cytometry, WB application(s). This antibody reacts with Human.
Application	Flow Cytometry, WB
Clonality	Monoclonal OPAL1-01
Formulation	Tris buffered saline (TBS), pH 8.0, 15 mM sodium azide
Storage Instructions	Store at 2-8°C. Do not freeze.
Host	Mouse
Uniprot ID	Q9NX94

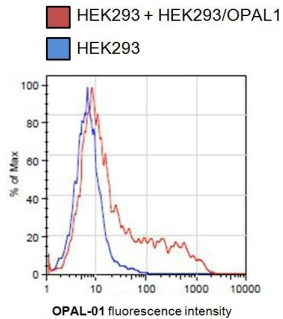
Technical Details

Immunogen	Recombinant fragment of human OPAL1 (amino acids 152-342). The mouse monoclonal antibody OPAL1-01 recognizes an intracellular epitope of OPAL1 (outcome predictor in acute leukemia 1), a transmembrane adaptor protein expressed mainly by megacaryocytes and platelets.
Predicted Reactive Species	Primate
Cross Reactivity	Following cross-reactivity (%) was determined by classic double-antibody RIA using unlabelled hormones: beta-hCG (77), alpha-hCG (1.3), hLH (0.86), hFSH (< 0.5), hTSH (< 0.5).
Isotype	Mouse IgG2a
Form	Liquid
Concentration	1 mg/ml
Purification	Purified by protein-A affinity chromatography.

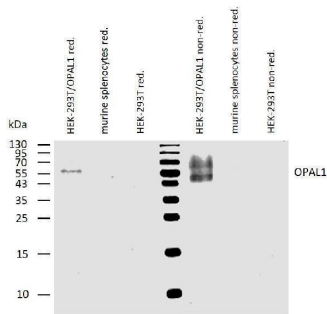
Suggested Dilutions

Flow cytometry: 1-4 $\mu\text{g/ml}$, intracellular staining.
Western blotting: 1-2 $\mu\text{g/ml}$, non-reducing conditions.

Anti-OPAL1 Purified WBP1L Monoclonal Antibody (M14439) Images



Flow cytometry analysis of OPAL-transfected HEK293 cells using mouse monoclonal antibody OPAL1-01.



Western blotting analysis of human OPAL1 using mouse monoclonal antibody OPAL1-01 on lysates of HEK-293T/OPAL1 transfectants, and of murine splenocytes and HEK-293T cells (negative controls) under reducing and non-reducing conditions. Nitrocellulose membrane was probed with 2 μ g/ml of mouse anti-OPAL1 monoclonal antibody followed by IRDye800-conjugated anti-mouse secondary antibody. OPAL1 was detected at around 45-60 kDa.

Submit a product review to [Biocompare.com](https://www.biocompare.com)

Submit a review of this product to [Biocompare.com](https://www.biocompare.com) to receive a \$20 Amazon.com giftcard! Your reviews help your fellow scientists make the right decisions. Thank you for your contribution.



Anti-OPAL1 Purified WBP1L Monoclonal Antibody

For Research Use Only. Not for use in diagnostic procedures.