

Anti-TBCEL Mouse Monoclonal Antibody [Clone ID: OTI3H3]

Catalog Number: M14442

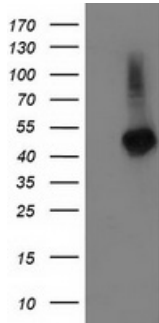
Overview

Product Name	Anti-TBCEL Mouse Monoclonal Antibody [Clone ID: OTI3H3]
Reactive Species	Human, Mouse, Rat
Description	Boster Bio TBCEL mouse monoclonal antibody, clone OTI3H3 (formerly 3H3). Catalog# M14442. Tested in FC, WB. This antibody reacts with Human, Mouse, Rat.
Application	Flow Cytometry, WB
Clonality	Monoclonal OTI3H3
Formulation	PBS (pH 7.3) containing 1% stabilizing protein, 50% glycerol and 0.02% sodium azide. This antibody is supplied in a stabilized formulation. Compatibility with conjugation reactions depends on the chemistry of the conjugation method used. For conjugation methods that are not compatible with the stabilizing components present in this formulation, a carrier-free antibody format is required.
Storage Instructions	Store at -20°C as received.
Host	Mouse
Uniprot ID	Q5QJ74

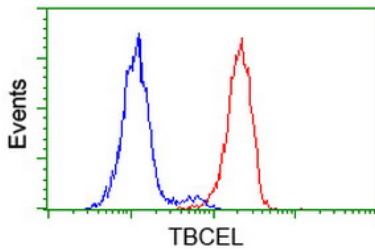
Technical Details

Immunogen	Full length human recombinant protein of human TBCEL (NP_689928) produced in HEK293T cell.
Isotype	IgG1
Concentration	0.45 mg/ml
Purification	Purified from mouse ascites fluids or tissue culture supernatant by affinity chromatography (protein A/G)
Suggested Dilutions	WB 1:500~2000 Flow Cytometry 1:100

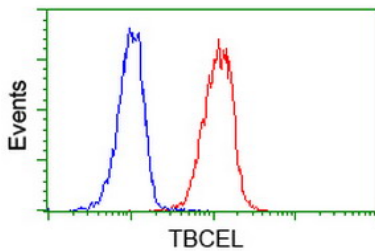
Anti-TBCEL Mouse Monoclonal Antibody [Clone ID: OTI3H3] (M14442) Images



HEK293T cells were transfected with the pCMV6-ENTRY control (Left lane) or pCMV6-ENTRY TBCEL (Right lane) cDNA for 48 hrs and lysed. Equivalent amounts of cell lysates (5 ug per lane) were separated by SDS-PAGE and immunoblotted with anti-TBCEL.



Flow cytometric Analysis of HeLa cells



Flow cytometric Analysis of Jurkat cells

Submit a product review to Biocompare.com

Submit a review of this product to Biocompare.com to receive a \$20 Amazon.com giftcard! Your reviews help your fellow scientists make the right decisions. Thank you for your contribution.



Anti-TBCEL Mouse Monoclonal Antibody [Clone ID: OTI3H3]

For Research Use Only. Not for use in diagnostic procedures.