

Anti-TBCEL Mouse Monoclonal Antibody [Clone ID: OTI2A9]

Catalog Number: M14442-1

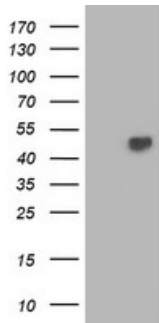
Overview

Product Name	Anti-TBCEL Mouse Monoclonal Antibody [Clone ID: OTI2A9]
Reactive Species	Human, Mouse, Rat
Description	Boster Bio TBCEL mouse monoclonal antibody, clone OTI2A9 (formerly 2A9). Catalog# M14442-1. Tested in IHC, WB. This antibody reacts with Human, Mouse, Rat.
Application	IHC, WB
Clonality	Monoclonal OTI2A9
Formulation	PBS (pH 7.3) containing 1% stabilizing protein, 50% glycerol and 0.02% sodium azide. This antibody is supplied in a stabilized formulation. Compatibility with conjugation reactions depends on the chemistry of the conjugation method used. For conjugation methods that are not compatible with the stabilizing components present in this formulation, a carrier-free antibody format is required.
Storage Instructions	Store at -20°C as received.
Host	Mouse
Uniprot ID	Q5QJ74

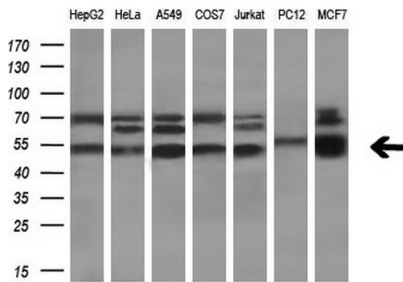
Technical Details

Immunogen	Full length human recombinant protein of human TBCEL (NP_689928) produced in HEK293T cell.
Isotype	IgG2a
Concentration	0.84 mg/ml
Purification	Purified from mouse ascites fluids or tissue culture supernatant by affinity chromatography (protein A/G)
Suggested Dilutions	WB 1:2000 IHC 1:150

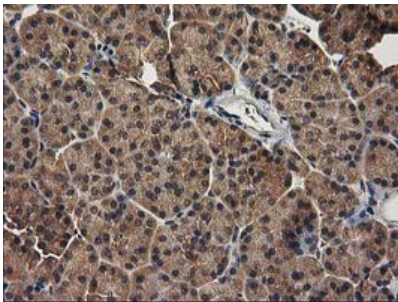
Anti-TBCEL Mouse Monoclonal Antibody [Clone ID: OTI2A9] (M14442-1) Images



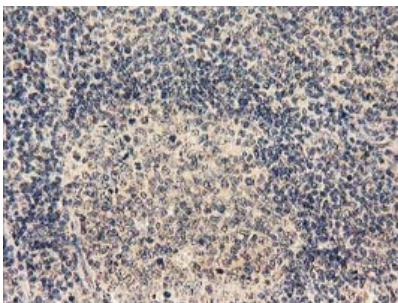
HEK293T cells were transfected with the pCMV6-ENTRY control (Left lane) or pCMV6-ENTRY TBCEL (Right lane) cDNA for 48 hrs and lysed. Equivalent amounts of cell lysates (5 ug per lane) were separated by SDS-PAGE and immunoblotted with anti-TBCEL.



Western blot analysis of extracts (10ug) from 7 different cell lines by using anti-TBCEL monoclonal antibody (1:200).

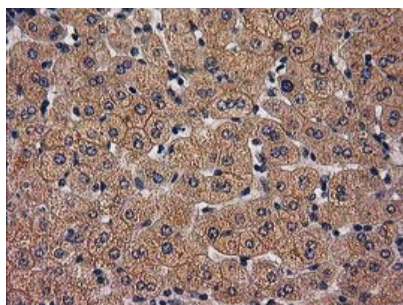


Immunohistochemical staining of paraffin-embedded Human pancreas tissue within the normal limits using anti-TBCEL mouse monoclonal antibody. (Heat-induced epitope retrieval by 10mM citric buffer)



Immunohistochemical staining of paraffin-embedded Human lymph node tissue within the normal limits using anti-TBCEL mouse monoclonal antibody. (Heat-induced epitope retrieval by 10mM citric buffer)

Immunohistochemical staining of paraffin-embedded Human liver tissue within the normal limits using anti-TBCEL mouse monoclonal antibody. (Heat-induced epitope retrieval by 10mM citric buffer)



Submit a product review to Biocompare.com

Submit a review of this product to Biocompare.com to receive a \$20 Amazon.com giftcard! Your reviews help your fellow scientists make the right decisions. Thank you for your contribution.



Anti-TBCEL Mouse Monoclonal Antibody [Clone ID: OT12A9]

For Research Use Only. Not for use in diagnostic procedures.