

## Anti-Trimethyl-Histone H4 (Lys20) HIST1H4A Rabbit Monoclonal Antibody, Clone#RM208

Catalog Number: M14495-11

### Overview

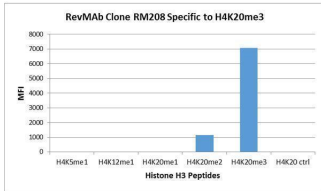
Product Name	Anti-Trimethyl-Histone H4 (Lys20) HIST1H4A Rabbit Monoclonal Antibody, Clone#RM208
Reactive Species	Human, Vertebrates
Description	Boster Bio Anti-Trimethyl-Histone H4 (Lys20) HIST1H4A Rabbit Monoclonal Antibody, Clone#RM208 (Catalog # M14495-11). Tested in WB, ELISA, Luminex applications. This antibody reacts with Human, Vertebrates.
Application	ELISA, WB, Luminex
Clonality	Monoclonal RM208
Formulation	50% Glycerol/PBS with 1% stabilizing protein and 0.09% sodium azide This antibody is supplied in a stabilized formulation. Compatibility with conjugation reactions depends on the chemistry of the conjugation method used. For conjugation methods that are not compatible with the stabilizing components present in this formulation, a carrier-free antibody format is required.
Storage Instructions	Store at -20°C for one year. Avoid repeated freeze-thaw cycles.
Host	Rabbit
Uniprot ID	P62805

### Technical Details

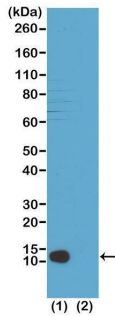
Immunogen	A trimethyl-peptide corresponding to trimethyl-Histone H4 (Lys20)
Cross Reactivity	Reacts to Histone H4 trimethylated at Lysine 20(K20me3). May slightly cross-react to dimethylated Lysine 20(K20me2) at a higher concentration. No cross-reactivity: non-modified Lysine 20, monomethylated Lysine 20(K20me1), or other methylations
Isotype	Rabbit IgG
Form	Liquid
Concentration	1 mg/mL
Purification	Protein A affinity purified from an animal origin-free culture supernatant
Suggested Dilutions	Western Blot: 1 ug/mL – 2 ug/mL ELISA: 0.5 ug/mL - 1 ug/mL Luminex: 0.1 ug/mL – 0.5 ug/mL.



## Anti-Trimethyl-Histone H4 (Lys20) HIST1H4A Rabbit Monoclonal Antibody, Clone#RM208 (M14495-11) Images



Specificity Test result RM208 specifically reacts to Histone H4 trimethylated at Lysine 20 (K20me3). May slightly cross react to dimethylated Lysine 20 (K20me2) at higher concentrations. No cross reactivity with non-modified Lysine 20, monomethylated Lysine 20 (K20me1), or other methylations in histone H4.



Specificity Test result RM208 specifically reacts to Histone H4 trimethylated at Lysine 20 (K20me3). May slightly cross react to dimethylated Lysine 20 (K20me2) at higher concentrations. No cross reactivity with non-modified Lysine 20, monomethylated Lysine 20 (K20me1), or other methylations in histone H4.

### Submit a product review to Biocompare.com

Submit a review of this product to Biocompare.com to receive a \$20 Amazon.com giftcard! Your reviews help your fellow scientists make the right decisions. Thank you for your contribution.



Anti-Trimethyl-Histone H4 (Lys20) HIST1H4A Rabbit Monoclonal Antibody, Clone#RM208

For Research Use Only. Not for use in diagnostic procedures.