

## Anti-Monomethyl-Histone H4 (Arg3) HIST1H4A Rabbit Monoclonal Antibody, Clone#RM195

Catalog Number: M14495-5

### Overview

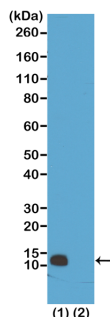
Product Name	Anti-Monomethyl-Histone H4 (Arg3) HIST1H4A Rabbit Monoclonal Antibody, Clone#RM195
Reactive Species	Human, Vertebrates
Description	Boster Bio Anti-Monomethyl-Histone H4 (Arg3) HIST1H4A Rabbit Monoclonal Antibody, Clone#RM195 (Catalog # M14495-5). Tested in WB, ICC, ELISA, Luminex applications. This antibody reacts with Human, Vertebrates.
Application	ELISA, ICC, WB, Luminex
Clonality	Monoclonal RM195
Formulation	50% Glycerol/PBS with 1% BSA and 0.09% sodium azide
Storage Instructions	Store at -20°C for one year. Avoid repeated freeze-thaw cycles.
Host	Rabbit
Uniprot ID	P62805

### Technical Details

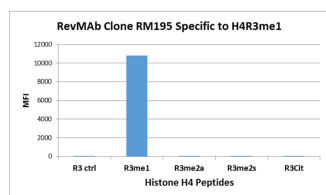
Immunogen	A monomethyl -peptide corresponding to the Monomethyl -Histone H4 (Arg3).
Cross Reactivity	This antibody reacts to Histone H4 monomethylated at Arginine 3 (R3me1). No cross-reactivity with unmodified Arginine 3, asymmetric or symmetric dimethylated Arginine 3, and citrullinated Arginine 3 in Histone H4.
Isotype	Rabbit IgG
Form	Liquid
Concentration	1 mg/mL
Purification	Protein A affinity purified from an animal origin-free culture supernatant
Suggested Dilutions	<p>Dilute the sample so that the expected range of concentrations fall within the detection range of this kit.</p> <p>If the expected range of concentration is unknown, a pilot test should be conducted to decide the optimal dilution ratio for your samples.</p> <p>Some PubMed article(s) citing the expression level of this target are as follows:</p> <p>Boster Bio's internal QC testing used:</p> <p>WB: 0.5 ug/mL - 2 ug/mL</p> <p>ICC: 1 ug/mL - 2 ug/mL</p> <p>ELISA: 0.2 ug/mL - 1 ug/mL</p>

	Luminex: 0.2 ug/mL - 1 ug/mL.
--	-------------------------------

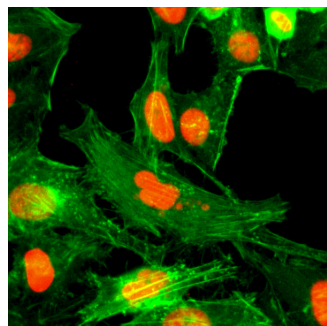
## Anti-Monomethyl-Histone H4 (Arg3) HIST1H4A Rabbit Monoclonal Antibody, Clone#RM195 (M14495-5) Images



**Figure 1. Western Blotting result**  
Western Blot of (1) acid extracts of HeLa cells; (2) recombinant Histone H4. Using RM195 at 0.5 ug/mL, showed a band of Histone monomethylated at Arginine 3 in HeLa cells.



**Figure 2. Specificity Test result**  
RM195 specifically reacts to Histone H4 monomethylated at Arginine 3 (R3me1). No cross reactivity with unmodified Arg 3 (R3 ctrl), asymmetric dimethylated Arg 3 (R3me2a) or symmetric dimethylated Arg 3 (R3me2s), and citrullinated Arg 3 (R3Cit) in Histone H4.



**Figure 3. ICC result**  
Immunocytochemical staining of HeLa cells using anti-Monomethyl-Histone H4 (Arg3) Antibody (Clone RM195) (red). Actin filaments have been labeled with fluorescein phalloidin (green).

**Submit a product review to Biocompare.com**

Submit a review of this product to Biocompare.com to receive a \$20 Amazon.com giftcard! Your reviews help your fellow scientists make the right decisions. Thank you for your contribution.



Anti-Monomethyl-Histone H4 (Arg3) HIST1H4A Rabbit Monoclonal Antibody, Clone#RM195