

Anti-KRT84 Mouse Monoclonal Antibody [Clone ID: OTI2D1]

Catalog Number: M14544

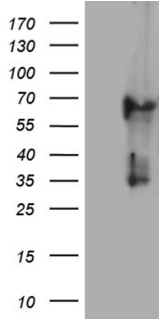
Overview

Product Name	Anti-KRT84 Mouse Monoclonal Antibody [Clone ID: OTI2D1]
Reactive Species	Human, Rat
Description	Boster Bio KRT84 mouse monoclonal antibody, clone OTI2D1. Catalog# M14544. Tested in IHC, WB. This antibody reacts with Human, Rat.
Application	IHC, WB
Clonality	Monoclonal OTI2D1
Formulation	PBS (pH 7.3) containing 1% stabilizing protein, 50% glycerol and 0.02% sodium azide. This antibody is supplied in a stabilized formulation. Compatibility with conjugation reactions depends on the chemistry of the conjugation method used. For conjugation methods that are not compatible with the stabilizing components present in this formulation, a carrier-free antibody format is required.
Storage Instructions	Store at -20°C as received.
Host	Mouse
Uniprot ID	Q9NSB2

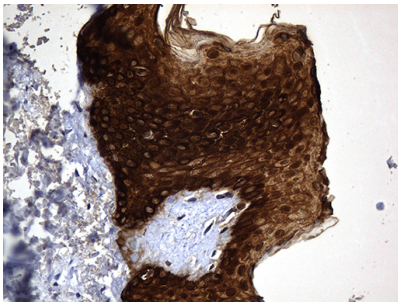
Technical Details

Immunogen	Full length human recombinant protein of human KRT84 (NP_149034) produced in E.coli.
Isotype	IgG1
Concentration	1 mg/ml
Purification	Purified from mouse ascites fluids or tissue culture supernatant by affinity chromatography (protein A/G)
Suggested Dilutions	IHC 1:500

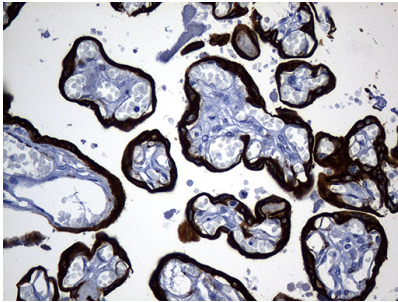
Anti-KRT84 Mouse Monoclonal Antibody [Clone ID: OTI2D1] (M14544) Images



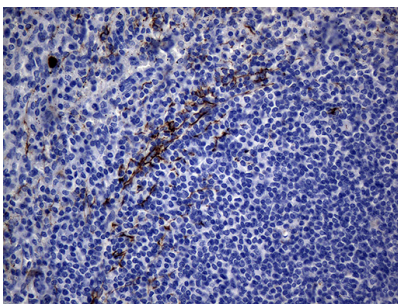
HEK293T cells were transfected with the pCMV6-ENTRY control (Left lane) or pCMV6-ENTRY KRT84 (Right lane) cDNA for 48 hrs and lysed. Equivalent amounts of cell lysates (5 ug per lane) were separated by SDS-PAGE and immunoblotted with anti-KRT84 (1:500).



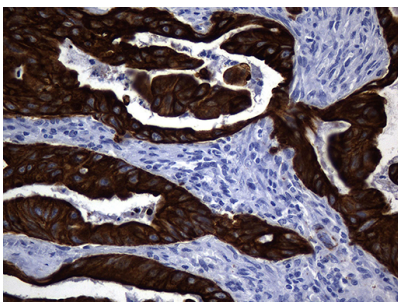
Immunohistochemical staining of paraffin-embedded Human skin tissue within the normal limits using anti-KRT84 mouse monoclonal antibody. (Heat-induced epitope retrieval by 1mM EDTA in 10mM Tris buffer (pH8.5) at 120°C for 3min)



Immunohistochemical staining of paraffin-embedded Human placenta tissue within the normal limits using anti-KRT84 mouse monoclonal antibody. (Heat-induced epitope retrieval by 1mM EDTA in 10mM Tris buffer (pH8.5) at 120°C for 3min)



Immunohistochemical staining of paraffin-embedded Human spleen tissue within the normal limits using anti-KRT84 mouse monoclonal antibody. (Heat-induced epitope retrieval by Tris-EDTA (1:500))



Immunohistochemical staining of paraffin-embedded Carcinoma of Human spleen tissue within the normal limits using anti-KRT84 mouse monoclonal antibody. (Heat-induced epitope retrieval by 1mM EDTA in 10mM Tris buffer (pH8.5) at 120°C for 3min)

Submit a product review to Biocompare.com

Submit a review of this product to Biocompare.com to receive a \$20 Amazon.com giftcard! Your reviews help your fellow scientists make the right decisions. Thank you for your contribution.



Anti-KRT84 Mouse Monoclonal Antibody [Clone ID: OTI2D1]

For Research Use Only. Not for use in diagnostic procedures.