

Anti-RABL2A Mouse Monoclonal Antibody [Clone ID: OTI4A8]

Catalog Number: M14567

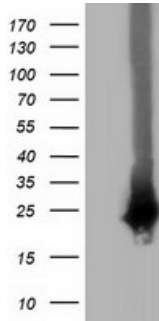
Overview

Product Name	Anti-RABL2A Mouse Monoclonal Antibody [Clone ID: OTI4A8]
Reactive Species	Human, Monkey, Rat
Description	Boster Bio RABL2A mouse monoclonal antibody, clone OTI4A8 (formerly 4A8). Catalog# M14567. Tested in FC, IF, WB. This antibody reacts with Human, Monkey, Rat.
Application	Flow Cytometry, IF, WB
Clonality	Monoclonal OTI4A8
Formulation	PBS (pH 7.3) containing 1% stabilizing protein, 50% glycerol and 0.02% sodium azide. This antibody is supplied in a stabilized formulation. Compatibility with conjugation reactions depends on the chemistry of the conjugation method used. For conjugation methods that are not compatible with the stabilizing components present in this formulation, a carrier-free antibody format is required.
Storage Instructions	Store at -20°C as received.
Host	Mouse
Uniprot ID	Q9UBK7

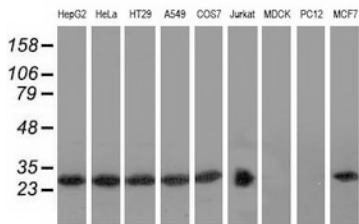
Technical Details

Immunogen	Full length human recombinant protein of human RABL2A (NP_009013) produced in HEK293T cell.
Isotype	IgG1
Concentration	0.5 mg/ml
Purification	Purified from mouse ascites fluids or tissue culture supernatant by affinity chromatography (protein A/G)
Suggested Dilutions	WB: 1:500~2000 IF: 1:100 Flow cytometry: 1:100

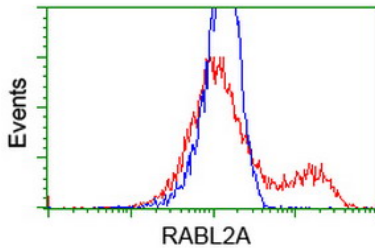
Anti-RABL2A Mouse Monoclonal Antibody [Clone ID: OTI4A8] (M14567) Images



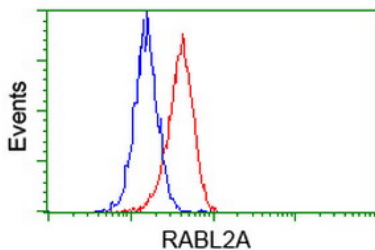
HEK293T cells were transfected with the pCMV6-ENTRY control (Left lane) or pCMV6-ENTRY RABL2A (Right lane) cDNA for 48 hrs and lysed. Equivalent amounts of cell lysates (5 ug per lane) were separated by SDS-PAGE and immunoblotted with anti-RABL2A.



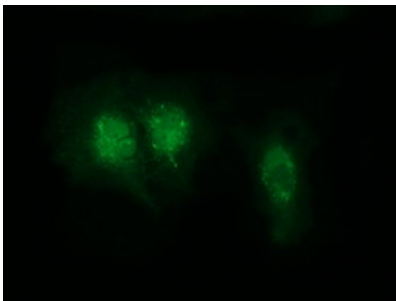
Western blot analysis of extracts (35ug) from 9 different cell lines by using anti-RABL2A monoclonal antibody.



HEK293T cells transfected with either RABL2A (Myc-DDK-tagged) overexpress plasmid (Red) or empty vector control plasmid (Blue) were immunostained by anti-RABL2A antibody (M14567)



Flow cytometric Analysis of HeLa cells



Anti-RABL2A mouse monoclonal antibody (M14567) immunofluorescent staining of COS7 cells transiently transfected by pCMV6-ENTRY RABL2A.

Submit a review of this product to Biocompare.com to receive a \$20 Amazon.com giftcard! Your reviews help your fellow scientists make the right decisions. Thank you for your contribution.



Anti-RABL2A Mouse Monoclonal Antibody [Clone ID: OT14A8]

For Research Use Only. Not for use in diagnostic procedures.