

## Anti-GPCR 2037 (GPR151) Mouse Monoclonal Antibody [Clone ID: OTI3D1]

Catalog Number: M14582

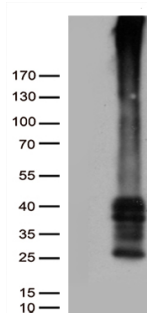
### Overview

Product Name	Anti-GPCR 2037 (GPR151) Mouse Monoclonal Antibody [Clone ID: OTI3D1]
Reactive Species	Human
Description	Boster Bio GPR151 mouse monoclonal antibody, clone OTI3D1. Catalog# M14582. Tested in WB. This antibody reacts with Human.
Application	WB
Clonality	Monoclonal OTI3D1
Formulation	PBS (pH 7.3) containing 1% stabilizing protein, 50% glycerol and 0.02% sodium azide. This antibody is supplied in a stabilized formulation. Compatibility with conjugation reactions depends on the chemistry of the conjugation method used. For conjugation methods that are not compatible with the stabilizing components present in this formulation, a carrier-free antibody format is required.
Storage Instructions	Store at -20°C as received.
Host	Mouse
Uniprot ID	Q8TDV0

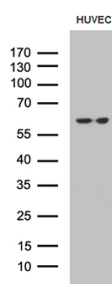
### Technical Details

Immunogen	Full length human recombinant protein of human GPR151 (NP_919227) produced in HEK293T cell.
Isotype	IgG1
Concentration	1 mg/ml
Purification	Purified from mouse ascites fluids or tissue culture supernatant by affinity chromatography (protein A/G)
Suggested Dilutions	WB 1:500

## Anti-GPCR 2037 (GPR151) Mouse Monoclonal Antibody [Clone ID: OTI3D1] (M14582) Images



HEK293T cells were transfected with the pCMV6-ENTRY control (Left lane) or pCMV6-ENTRY GPR151 (Right lane) cDNA for 48 hrs and lysed. Equivalent amounts of cell lysates (5 ug per lane) were separated by SDS-PAGE and immunoblotted with anti-GPR151 (1:5000).



Western blot analysis of extracts (35ug) from HUVEC cell line by using anti-GPR151 monoclonal antibody (1:500).

### Submit a product review to Biocompare.com

Submit a review of this product to Biocompare.com to receive a \$20 Amazon.com giftcard! Your reviews help your fellow scientists make the right decisions. Thank you for your contribution.



Anti-GPCR 2037 (GPR151) Mouse Monoclonal Antibody [Clone ID: OTI3D1]

For Research Use Only. Not for use in diagnostic procedures.