

Anti-TTLL12 Mouse Monoclonal Antibody [Clone ID: OTI4B2]

Catalog Number: M14589

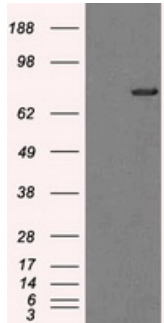
Overview

Product Name	Anti-TTLL12 Mouse Monoclonal Antibody [Clone ID: OTI4B2]
Reactive Species	Human, Mouse, Rat
Description	Boster Bio Anti-TTLL12 mouse monoclonal antibody, clone OTI4B2 (formerly 4B2). Catalog# M14589. Tested in FC, IF, IHC, WB. This antibody reacts with Human, Mouse, Rat.
Application	Flow Cytometry, IF, IHC, WB
Clonality	Monoclonal OTI4B2
Formulation	PBS (pH 7.3) containing 1% stabilizing protein, 50% glycerol and 0.02% sodium azide. This antibody is supplied in a stabilized formulation. Compatibility with conjugation reactions depends on the chemistry of the conjugation method used. For conjugation methods that are not compatible with the stabilizing components present in this formulation, a carrier-free antibody format is required.
Storage Instructions	Store at -20°C as received.
Host	Mouse
Uniprot ID	Q14166

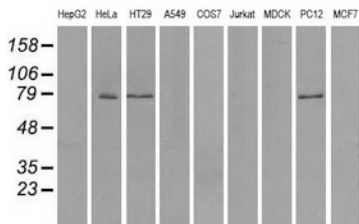
Technical Details

Immunogen	Full length human recombinant protein of human TTLL12 (NP_055955) produced in HEK293T cell.
Isotype	IgG1
Concentration	0.73 mg/ml
Purification	Purified from mouse ascites fluids or tissue culture supernatant by affinity chromatography (protein A/G)
Suggested Dilutions	WB 1:2000 IHC 1:50 IF 1:100 Flow Cytometry 1:100

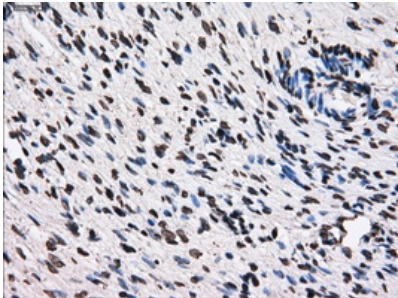
Anti-TTLL12 Mouse Monoclonal Antibody [Clone ID: OTI4B2] (M14589) Images



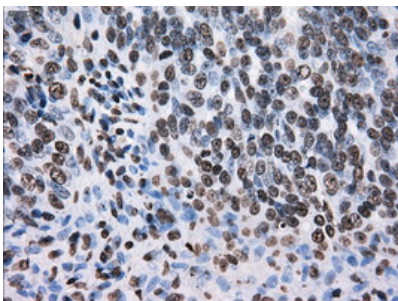
HEK293T cells were transfected with the pCMV6-ENTRY control (Left lane) or pCMV6-ENTRY TTLL12 (Right lane) cDNA for 48 hrs and lysed. Equivalent amounts of cell lysates (5 ug per lane) were separated by SDS-PAGE and immunoblotted with anti-TTLL12.



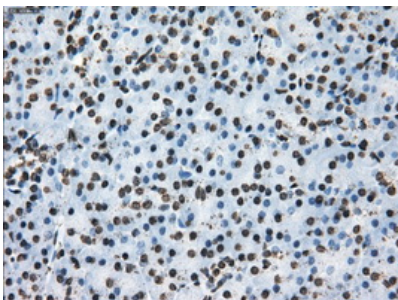
Western blot analysis of extracts (35ug) from 9 different cell lines by using anti-TTLL12 monoclonal antibody.



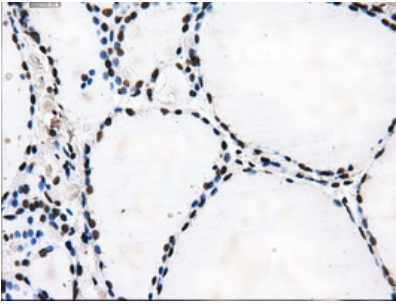
Immunohistochemical staining of paraffin-embedded Ovary tissue within the normal limits using anti-TTLL12mouse monoclonal antibody. (Heat-induced epitope retrieval by 10mM citric buffer)



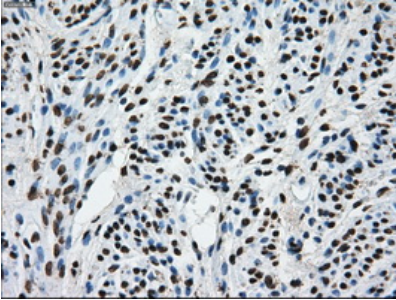
Immunohistochemical staining of paraffin-embedded Adenocarcinoma of ovary tissue using anti-TTLL12mouse monoclonal antibody. (Heat-induced epitope retrieval by 10mM citric buffer)



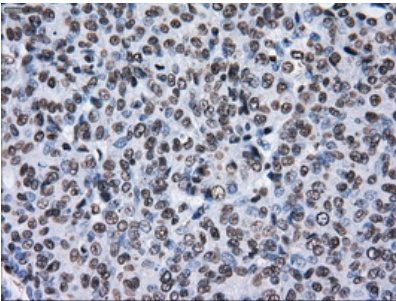
Immunohistochemical staining of paraffin-embedded pancreas tissue within the normal limits using anti-TTLL12mouse monoclonal antibody. (Heat-induced epitope retrieval by 10mM citric buffer)



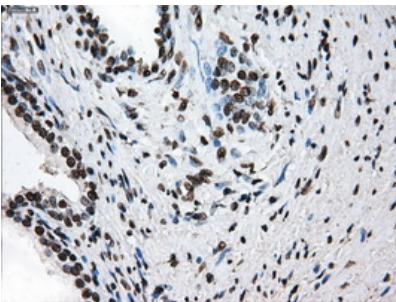
Immunohistochemical staining of paraffin-embedded thyroid tissue within the normal limits using anti-TTLL12 mouse monoclonal antibody. (Heat-induced epitope retrieval by 10mM citric buffer)



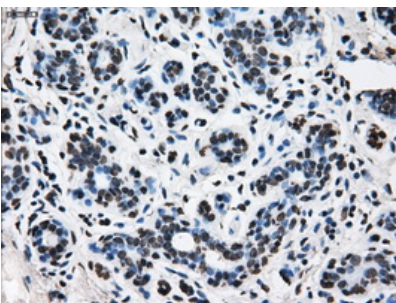
Immunohistochemical staining of paraffin-embedded endometrium tissue within the normal limits using anti-TTLL12 mouse monoclonal antibody. (Heat-induced epitope retrieval by 10mM citric buffer)



Immunohistochemical staining of paraffin-embedded Adenocarcinoma of endometrium tissue using anti-TTLL12 mouse monoclonal antibody. (Heat-induced epitope retrieval by 10mM citric buffer)

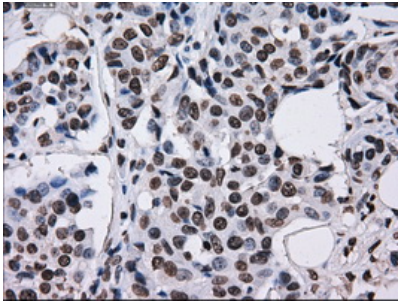


Immunohistochemical staining of paraffin-embedded prostate tissue within the normal limits using anti-TTLL12 mouse monoclonal antibody. (Heat-induced epitope retrieval by 10mM citric buffer)

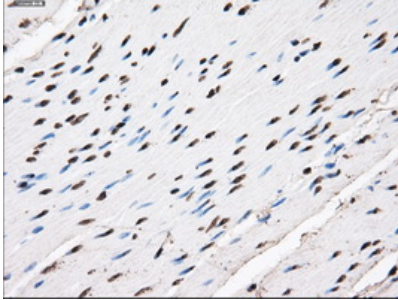


Immunohistochemical staining of paraffin-embedded breast tissue within the normal limits using anti-TTLL12 mouse monoclonal antibody. (Heat-induced epitope retrieval by 10mM citric buffer)

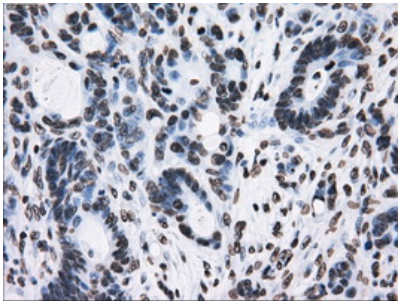
Immunohistochemical staining of paraffin-embedded Adenocarcinoma of breast tissue using anti-TTLL12 mouse monoclonal antibody. (Heat-induced epitope retrieval by



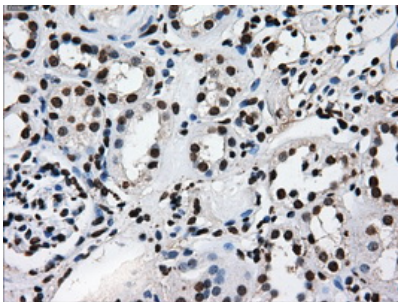
10mM citric buffer



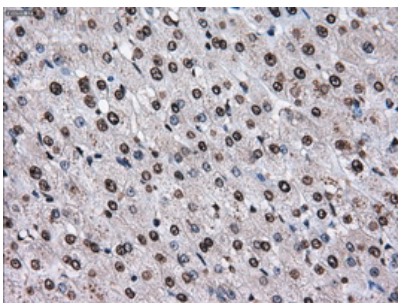
Immunohistochemical staining of paraffin-embedded colon tissue within the normal limits using anti-TTLL12 mouse monoclonal antibody. (Heat-induced epitope retrieval by 10mM citric buffer)



Immunohistochemical staining of paraffin-embedded Adenocarcinoma of colon tissue using anti-TTLL12 mouse monoclonal antibody. (Heat-induced epitope retrieval by 10mM citric buffer)

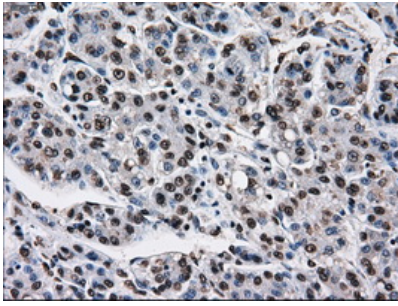


Immunohistochemical staining of paraffin-embedded Kidney tissue within the normal limits using anti-TTLL12 mouse monoclonal antibody. (Heat-induced epitope retrieval by 10mM citric buffer)

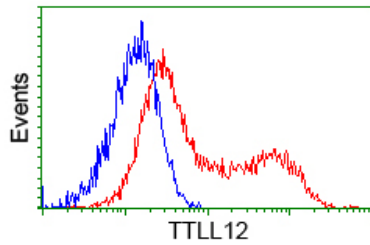


Immunohistochemical staining of paraffin-embedded liver tissue within the normal limits using anti-TTLL12 mouse monoclonal antibody. (Heat-induced epitope retrieval by 10mM citric buffer)

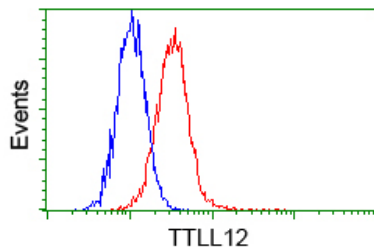
Immunohistochemical staining of paraffin-embedded Carcinoma of liver tissue using anti-TTLL12 mouse monoclonal antibody. (Heat-induced epitope retrieval by



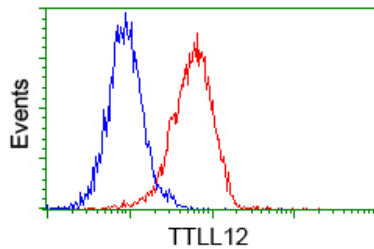
10mM citric buffer



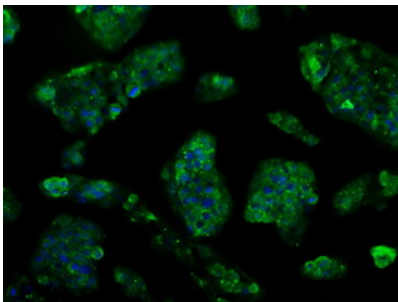
HEK293T cells transfected with either pCMV6-ENTRY TTLL12 (Red) or empty vector control plasmid (Blue) were immunostained with anti-TTLL12 mouse monoclonal (M14589)



Flow cytometric analysis of HeLa cells

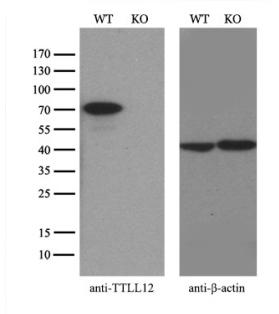


Flow cytometric analysis of Jurkat cells



Immunofluorescent staining of HepG2 cells using anti-TTLL12 mouse monoclonal antibody (M14589).

Equivalent amounts of cell lysates (10 ug per lane) of wild-type 293T cells (WT) and TTLL12-Knockout 293T cells (KO) were separated by SDS-PAGE and immunoblotted with anti-TTLL12 monoclonal antibody M14589



Submit a product review to Biocompare.com

Submit a review of this product to Biocompare.com to receive a \$20 Amazon.com giftcard! Your reviews help your fellow scientists make the right decisions. Thank you for your contribution.



Anti-TLL12 Mouse Monoclonal Antibody [Clone ID: OT14B2]

For Research Use Only. Not for use in diagnostic procedures.