

## Anti-C7orf16 (PPP1R17) Mouse Monoclonal Antibody [Clone ID: OTI2E5]

Catalog Number: M14719

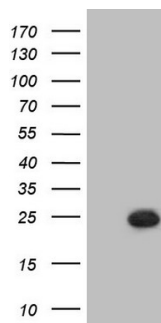
### Overview

Product Name	Anti-C7orf16 (PPP1R17) Mouse Monoclonal Antibody [Clone ID: OTI2E5]
Reactive Species	Human
Description	Boster Bio PPP1R17 mouse monoclonal antibody, clone OTI2E5. Catalog# M14719. Tested in WB. This antibody reacts with Human.
Application	WB
Clonality	Monoclonal OTI2E5
Formulation	PBS (pH 7.3) containing 1% stabilizing protein, 50% glycerol and 0.02% sodium azide. This antibody is supplied in a stabilized formulation. Compatibility with conjugation reactions depends on the chemistry of the conjugation method used. For conjugation methods that are not compatible with the stabilizing components present in this formulation, a carrier-free antibody format is required.
Storage Instructions	Store at -20°C as received.
Host	Mouse
Uniprot ID	O96001

### Technical Details

Immunogen	Full length human recombinant protein of human PPP1R17 (NP_006649) produced in E.coli.
Isotype	IgG1
Concentration	1 mg/ml
Purification	Purified from mouse ascites fluids or tissue culture supernatant by affinity chromatography (protein A/G)
Suggested Dilutions	WB 1:2000

## Anti-C7orf16 (PPP1R17) Mouse Monoclonal Antibody [Clone ID: OTI2E5] (M14719) Images



HEK293T cells were transfected with the pCMV6-ENTRY control (Left lane) or pCMV6-ENTRY PPP1R17 (Right lane) cDNA for 48 hrs and lysed. Equivalent amounts of cell lysates (5 ug per lane) were separated by SDS-PAGE and immunoblotted with anti-PPP1R17 (1:2000).

### Submit a product review to Biocompare.com

Submit a review of this product to Biocompare.com to receive a \$20 Amazon.com giftcard! Your reviews help your fellow scientists make the right decisions. Thank you for your contribution.



Anti-C7orf16 (PPP1R17) Mouse Monoclonal Antibody [Clone ID: OTI2E5]

For Research Use Only. Not for use in diagnostic procedures.