

Anti-COX4NB (EMC8) Mouse Monoclonal Antibody [Clone ID: OTI4F3]

Catalog Number: M14759

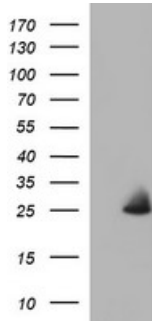
Overview

Product Name	Anti-COX4NB (EMC8) Mouse Monoclonal Antibody [Clone ID: OTI4F3]
Reactive Species	Human, Mouse, Rat
Description	Boster Bio COX4NB mouse monoclonal antibody, clone OTI4F3 (formerly 4F3). Catalog# M14759. Tested in IF, WB. This antibody reacts with Human, Mouse, Rat.
Application	IF, WB
Clonality	Monoclonal OTI4F3
Formulation	PBS (pH 7.3) containing 1% stabilizing protein, 50% glycerol and 0.02% sodium azide. This antibody is supplied in a stabilized formulation. Compatibility with conjugation reactions depends on the chemistry of the conjugation method used. For conjugation methods that are not compatible with the stabilizing components present in this formulation, a carrier-free antibody format is required.
Storage Instructions	Store at -20°C as received.
Host	Mouse
Uniprot ID	O43402

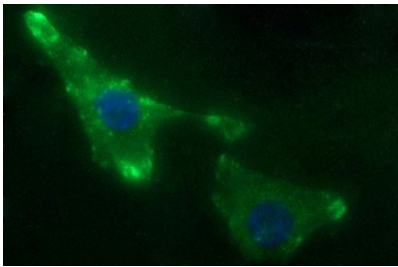
Technical Details

Immunogen	Full length human recombinant protein of human COX4NB (NP_006058) produced in HEK293T cell.
Isotype	IgG1
Concentration	1 mg/ml
Purification	Purified from mouse ascites fluids or tissue culture supernatant by affinity chromatography (protein A/G)
Suggested Dilutions	WB 1:1000

Anti-COX4NB (EMC8) Mouse Monoclonal Antibody [Clone ID: OTI4F3] (M14759) Images



HEK293T cells were transfected with the pCMV6-ENTRY control (Left lane) or pCMV6-ENTRY COX4NB (Right lane) cDNA for 48 hrs and lysed. Equivalent amounts of cell lysates (5 ug per lane) were separated by SDS-PAGE and immunoblotted with anti-COX4NB.



Immunofluorescent staining of HeLa cells using anti-COX4NB mouse monoclonal antibody (M14759).

Submit a product review to [Biocompare.com](https://www.biocompare.com)

Submit a review of this product to [Biocompare.com](https://www.biocompare.com) to receive a \$20 Amazon.com giftcard! Your reviews help your fellow scientists make the right decisions. Thank you for your contribution.



Anti-COX4NB (EMC8) Mouse Monoclonal Antibody [Clone ID: OTI4F3]

For Research Use Only. Not for use in diagnostic procedures.