

Anti-DUSP27 (DUPD1) Mouse Monoclonal Antibody [Clone ID: OTI7E4]

Catalog Number: M14857-1

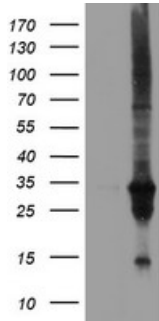
Overview

Product Name	Anti-DUSP27 (DUPD1) Mouse Monoclonal Antibody [Clone ID: OTI7E4]
Reactive Species	Human, Mouse
Description	Boster Bio DUPD1 (DUSP27) mouse monoclonal antibody, clone OTI7E4 (formerly 7E4). Catalog# M14857-1. Tested in FC, IHC, WB. This antibody reacts with Human, Mouse.
Application	Flow Cytometry, IHC, WB
Clonality	Monoclonal OTI7E4
Formulation	PBS (pH 7.3) containing 1% stabilizing protein, 50% glycerol and 0.02% sodium azide. This antibody is supplied in a stabilized formulation. Compatibility with conjugation reactions depends on the chemistry of the conjugation method used. For conjugation methods that are not compatible with the stabilizing components present in this formulation, a carrier-free antibody format is required.
Storage Instructions	Store at -20°C as received.
Host	Mouse
Uniprot ID	Q68J44

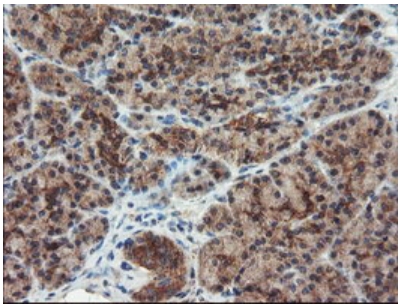
Technical Details

Immunogen	Full length human recombinant protein of human DUPD1 (NP_001003892) produced in HEK293T cell.
Isotype	IgG1
Concentration	1.1 mg/ml
Purification	Purified from mouse ascites fluids or tissue culture supernatant by affinity chromatography (protein A/G)
Suggested Dilutions	WB 1:2000 IHC 1:150 Flow Cytometry 1:100

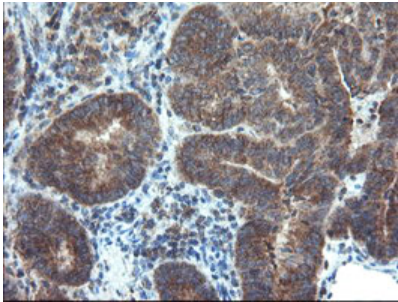
Anti-DUSP27 (DUPD1) Mouse Monoclonal Antibody [Clone ID: OTI7E4] (M14857-1) Images



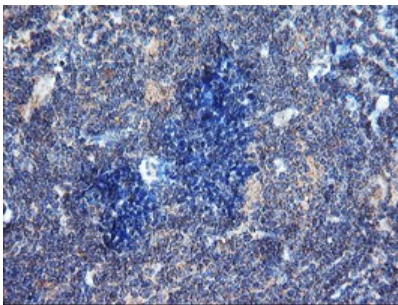
HEK293T cells were transfected with the pCMV6-ENTRY control (Left lane) or pCMV6-ENTRY DUPD1 (Right lane) cDNA for 48 hrs and lysed. Equivalent amounts of cell lysates (5 ug per lane) were separated by SDS-PAGE and immunoblotted with anti-DUPD1.



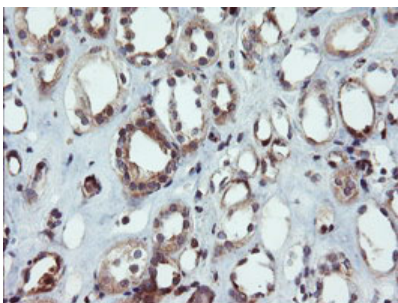
Immunohistochemical staining of paraffin-embedded Human pancreas tissue within the normal limits using anti-DUPD1 mouse monoclonal antibody. (Heat-induced epitope retrieval by 10mM citric buffer)



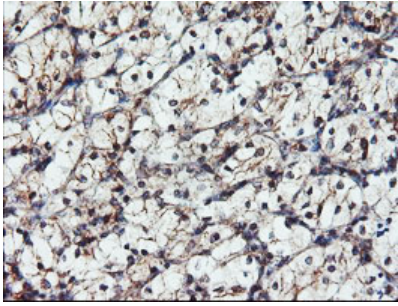
Immunohistochemical staining of paraffin-embedded Adenocarcinoma of Human endometrium tissue using anti-DUPD1 mouse monoclonal antibody. (Heat-induced epitope retrieval by 10mM citric buffer)



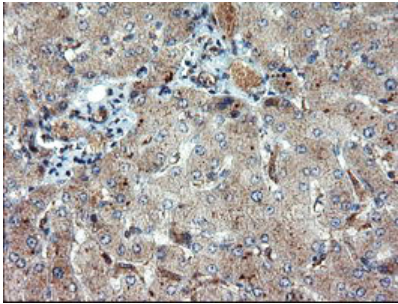
Immunohistochemical staining of paraffin-embedded Human lymphoma tissue using anti-DUPD1 mouse monoclonal antibody. (Heat-induced epitope retrieval by 10mM citric buffer)



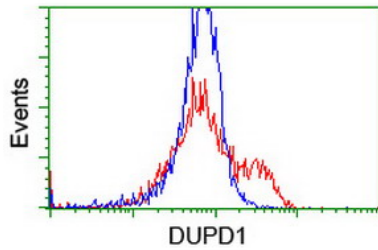
Immunohistochemical staining of paraffin-embedded Human Kidney tissue within the normal limits using anti-DUPD1 mouse monoclonal antibody. (Heat-induced epitope retrieval by 10mM citric buffer)



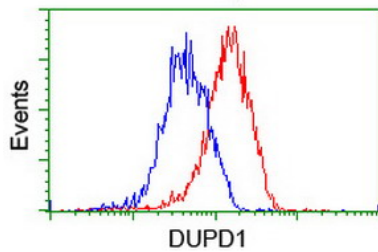
Immunohistochemical staining of paraffin-embedded Carcinoma of Human kidney tissue using anti-DUPD1 mouse monoclonal antibody. (Heat-induced epitope retrieval by 10mM citric buffer)



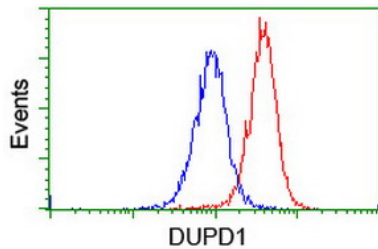
Immunohistochemical staining of paraffin-embedded Human liver tissue within the normal limits using anti-DUPD1 mouse monoclonal antibody. (Heat-induced epitope retrieval by 10mM citric buffer)



HEK293T cells transfected with either DUPD1 (Myc-DDK-tagged) overexpress plasmid (Red) or empty vector control plasmid (Blue) were immunostained by anti-DUPD1 antibody (M14857-1)



Flow cytometric Analysis of Hela cells



Flow cytometric Analysis of Jurkat cells

Submit a product review to [Biocompare.com](https://www.biocompare.com)

Submit a review of this product to [Biocompare.com](https://www.biocompare.com) to receive a \$20 Amazon.com giftcard! Your reviews help your fellow scientists make the right decisions. Thank you for your contribution.



Anti-DUSP27 (DUPD1) Mouse Monoclonal Antibody [Clone ID: OT17E4]

For Research Use Only. Not for use in diagnostic procedures.